

METAL SHEARS

- Raw Material : CR-MO
- Grip Material : PVC
- Hardness : 59-63 HRC
- Finish:Blade :Chrome Plated
- Features:

- .Japanese style
- .Hot drop Forged blades to strengthen durability of structure
- .Non-slip serrated edges to hold sheet metal
- .CR-MO center Fastener for high tensile strength and longer life
- .Safety latch lock
- .Solid and comfortable handle with non-slip design

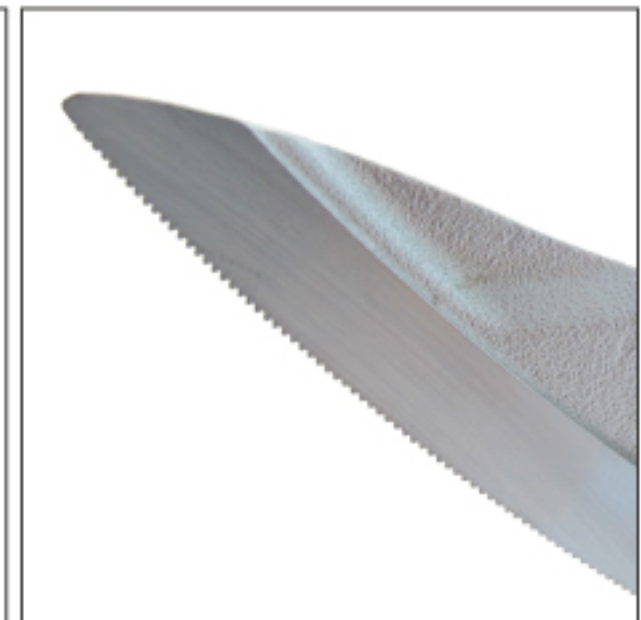


CHILI	A (mm)	C (mm)	L (mm)		
C17161	39	50	452	406	-

Packing way: slide blisters



Latch lock



Serrated edges

5 IN 1 MITRE SHEARS

- Raw material: Body-Steel + Anvil-Zinc Alloy Steel
- Grip material: PVC
- Blade material: K5
- Finishing: Chrome Plated

- .High-Carbon hardened steel blades provide maximum strength
- .Supplied with five interchangeable anvils for multi-functional cutting
- .Multi Angle Mitre Shears with seven pre-set angles from 45 to 120 degrees
- .Comfortable handle with non-slip and safety lock design
- .Ideal for cutting PU rods, tubing, hose, cordage, trim moulding, rubber, plastic moulding, branches



25mm 1"
C23122



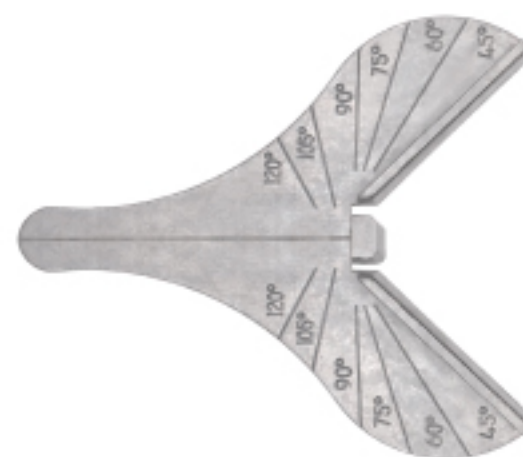
C23121



16mm 5/8" 19mm 3/4"
C23123



90°
C23124



C23125



CHILI	T (mm)	L (mm)	Weight (g)	Packing (Cubes)	CHILI	PC/SET	Weight (g)	Packing (Cubes)
C23121			330	12/72				
C23122			369	12/72				
C23123	3	215	367	12/72	C23125X	5	626	6/24
C23124			384	12/72				
C23125			358	12/72				

Packing way: blow case



JAB SAW

- Raw material: K5
- Grip material: PP+TPR
- Features:

- .Triple ground teeth by diamond wheel for fast and smooth cutting
- .Versatile for cutting drywall, wallboard, plywood and plastic pipes
- .Contour nubbed grip designed for comfort and ensures a solid grip
- .Sharp beveled tip for penetrating drywall without drilling
- .High carbon hardened steel blade with dual cutting edges for efficient and effortless push and pull strokes



CHILI	T (mm)	ℓ (mm)	L (mm)	📦	📦/📦
C41A151Y	1.6	160	290	124	12/120

LINOLEUM KNIFE

- Raw material: K5
- Grip material: PP+TPR
- Finishing: Chrome Plated
- Features:

- .Ergonomic, solid grip design with hanger hole
- .High-carbon hardened steel blades provide maximum strength with curved sharp edge
- .Suitable for cutting carpet, vinyl flooring, linoleum, wallpaper.

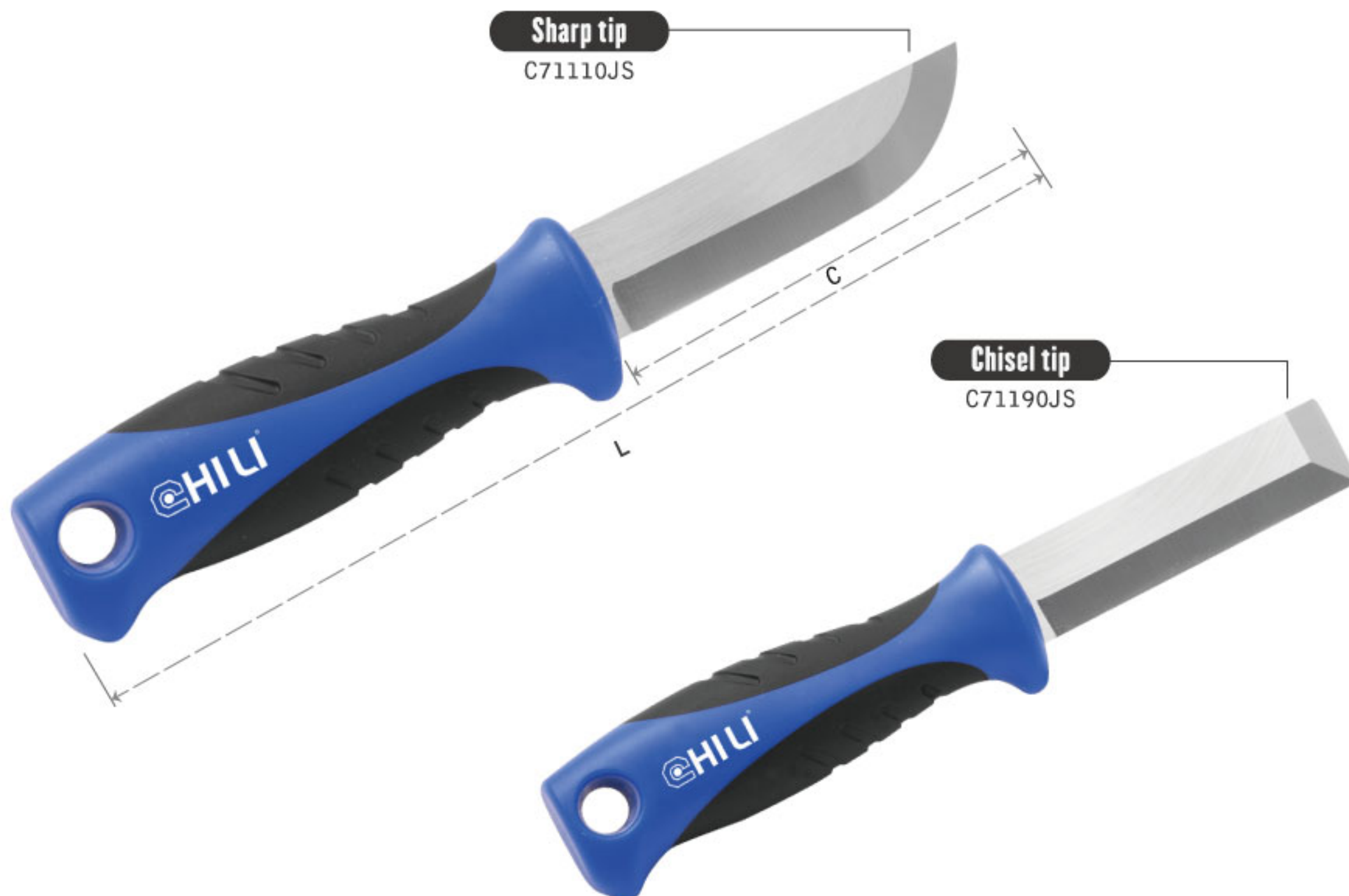


CHILI	T (mm)	ℓ (mm)	L (mm)	📦	📦/📦
C7510T	1.6	65	210	112	12/144

WRECKING KNIFE

- Raw material: K5
- Grip material: PP+TPR
- Finishing: Chrome Plated
- Features:

- .Ultra-comfort, soft rubber grip design helps reduce hand fatigue
- .Knuckle protection design to avoid injury
- .4 mm thick back edge and PP handle end able to withstand hammer striking
- .Grip end hole design for safety rope tie to prevent knife dropping



CHILI	T (mm)	C (mm)	L (mm)		
C71110JS	4.0	99	233	332	6/12
C71190JS	4.0	99	233	338	6/12

Packing way: sliding card

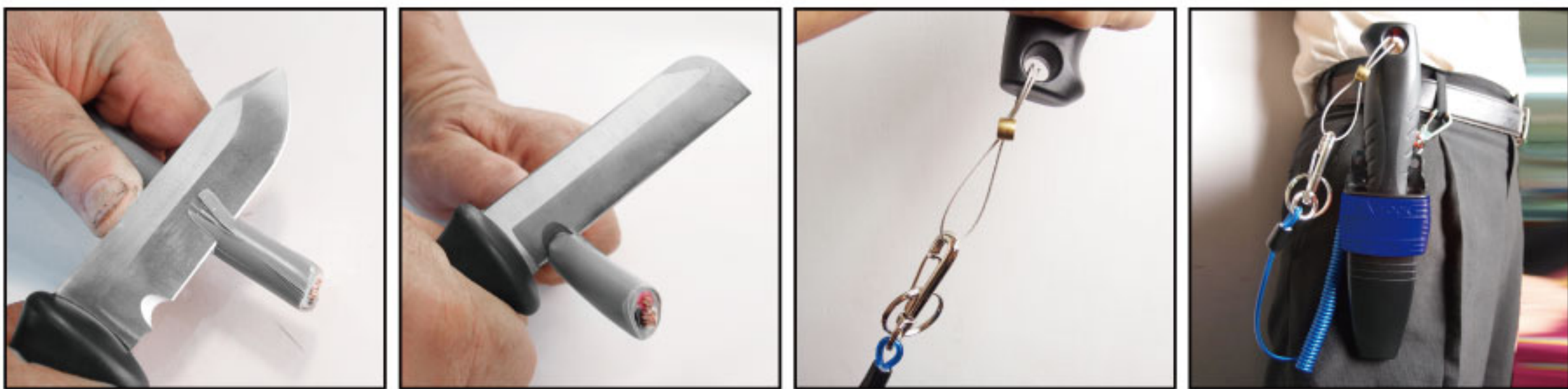


ELECTRICIAN KNIFES

- Raw material: 420J2
- Grip material: PP+TPR
- Features:

- .Ultra-comfort, soft rubber grip design helps reduce hand fatigue
- .Knuckle protection design to avoid injury
- .4mm thick back edge provide maximum strength
- .Cable cutting notch design for cable stripping and wire working
- .Grip end hole design for safety rope tie to prevent knife dropping
- .Double auto-safety-lock & ring lock design to prevent knife coming off
- .Alternative adjustable angular belt loops design for carry on the move

CUTTER

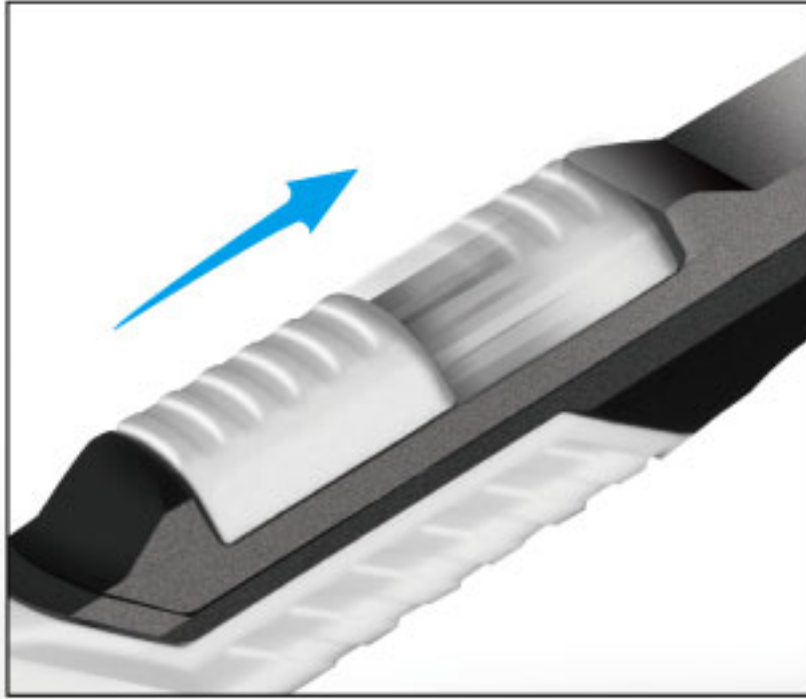


CHILI	Φ (mm)	T (mm)	C (mm)	L (mm)	📏	📦
C74710JS1	9	4	97	231	312	6/12
C74750JS1	9	4	97	231	320	6/12

Packing way: sliding card

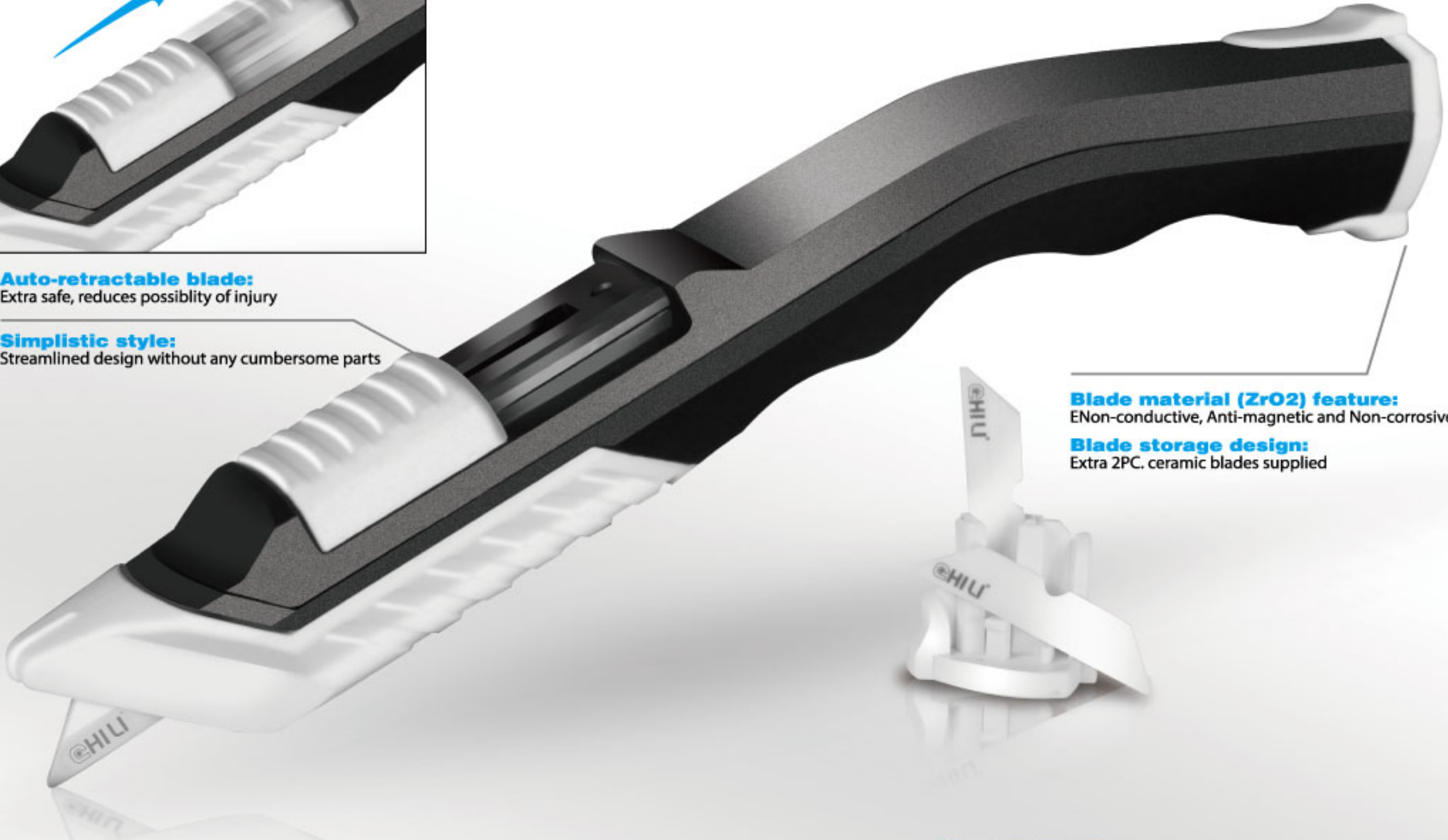


CERAMIC CUTTER



Auto-retractable blade:
Extra safe, reduces possibility of injury

Simplistic style:
Streamlined design without any cumbersome parts



Blade material (ZrO2) feature:
ENon-conductive, Anti-magnetic and Non-corrosive
Blade storage design:
Extra 2PC. ceramic blades supplied



Simple blade change:
6 steps to replace blade, no tools required.

Double-sided ceramic blade:
Reversible blade for extra long use.

Blade sharpness:
Up to 10X longer lasting than steel

Blade hardness:
Close to Diamond hardness

Injection molding technique:
Accurate, high density process ensures blade sharpness and durability



CHILI	Blade (mm)			L (mm)	📦	📦/📦
	L	W	T			
CC16100	34	7	1.2	154	38	10/60

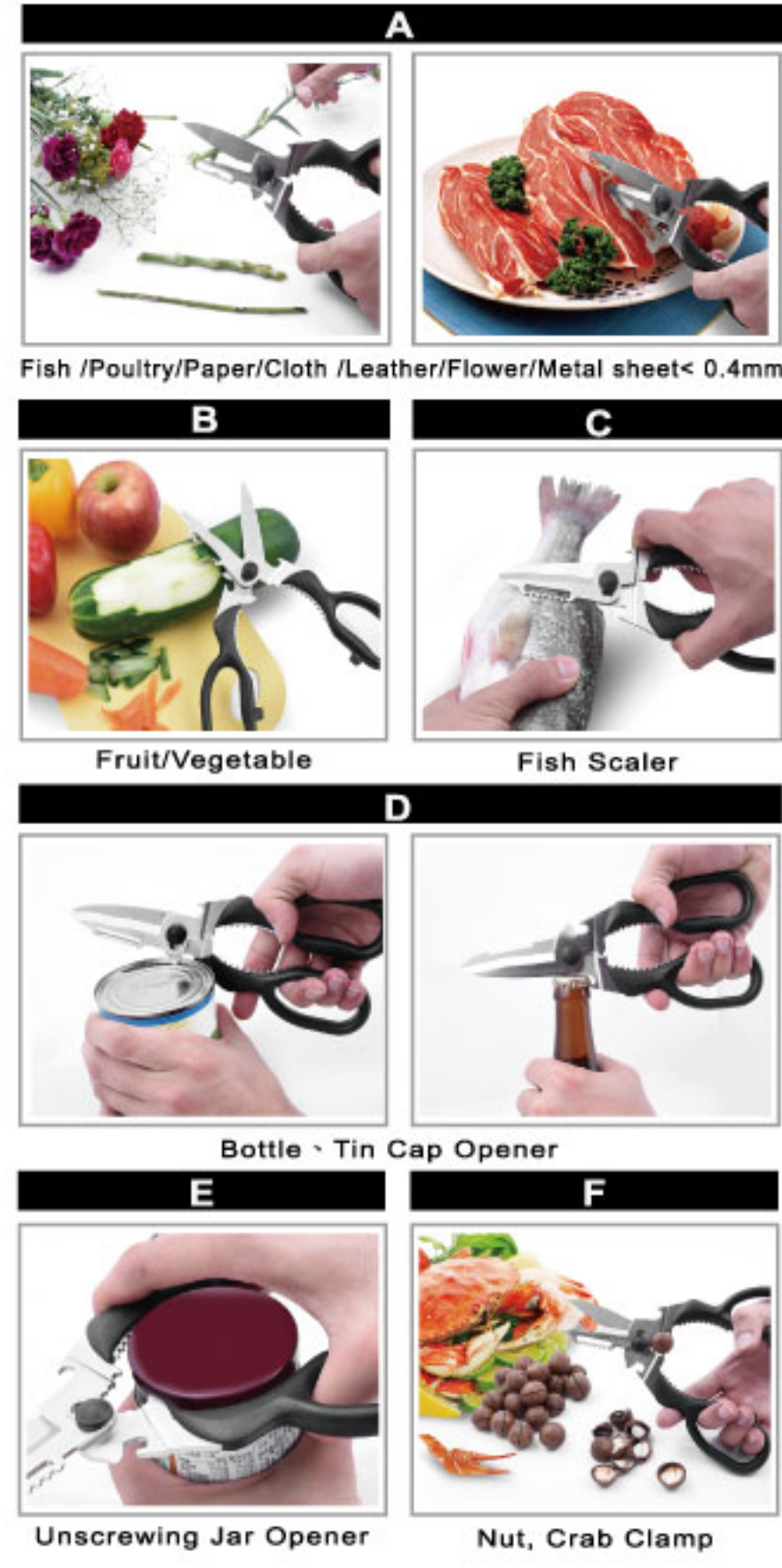
Packing way : sliding card



KITCHEN SCISSOR

- Raw material: 420J2
- Grip material: ABS
- Finishing: Electro Polished
- Features:

- .Corrosion-resistant, hardened & tempered blade
- .High leverage design to save strength
- .Sharp curved blades with special serrated edge design ensures non-slip, smooth cutting
- .Multi-function shears for kitchen and camping



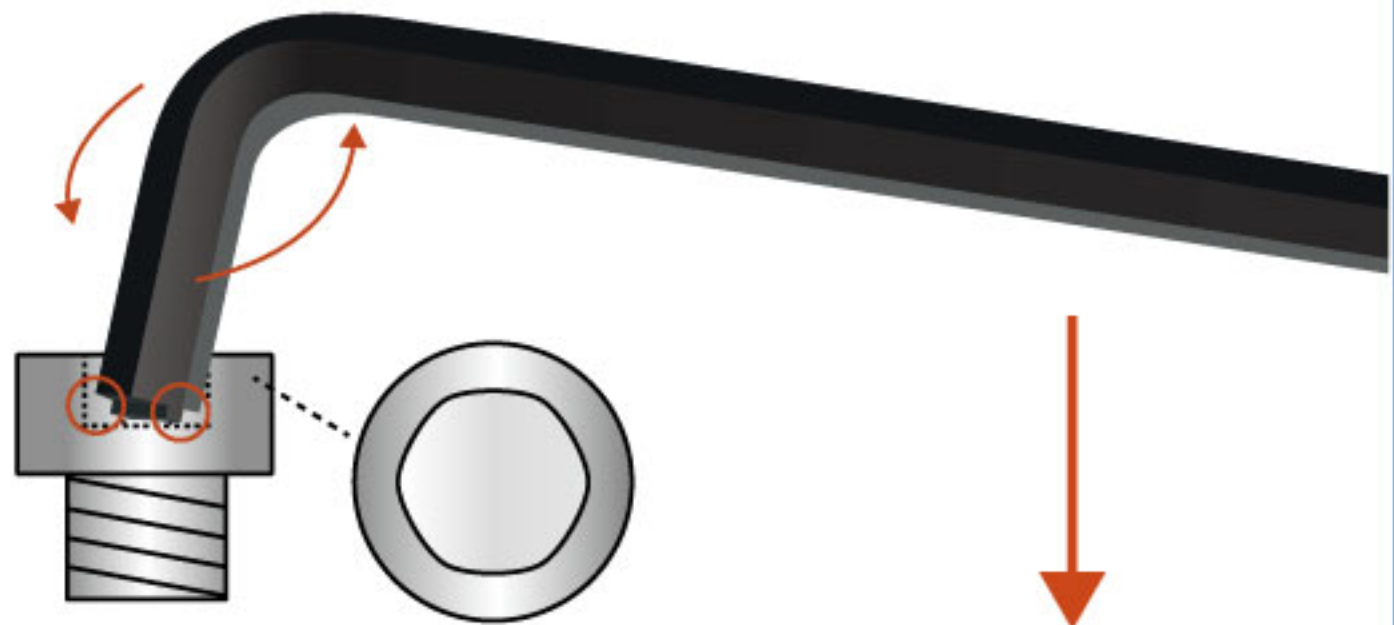
CHILI	T (mm)	ℓ (mm)	L (mm)	Weight	Box
C22130V	3.0	65	223	194	12/72

Packing way : sliding card

WORN-RIVAL HEX WRENCH

- Raw material: S2
- Finishing: Blue Satin
- Features:

- .Tip specialized patent design ensure be quick and efficient in loosening worn out hex bolt
- .Convex edge of tip is good working on severely hex bolt when pushing down and turning to force hex key
- .Reusable storage holder for easy tools retrieval



Worn Out Hex Bolt

CHILI	PC/SET	Contents	Weight	Box
S753H9X	9	1.5, 2, 2.5, 3, 4, 5, 6, 8, 10	462	6/24

Packing way : sliding card