

TIP SEAL PULLER

- Raw material: 420J2
- Grip material: PP+TPR
- Finishing: Electro Polished
- Features:
 - .Ergonomic solid grip design with hanger hole
 - .Solid forged body from single piece of stainless steel
 - .Two different hook tips designed for easy removal of oil and grease seals



CHILI	W (mm)	T(mm)	L (mm)	g	Box/Tray
AOPT	83	6	315	380	10/50

SEAM SPLITTER

- Raw material: 420J2
- Grip material: PP+TPR
- Finishing: Electro Polished
- Features:
 - .Ultra-comfort, soft rubber enclosed body can absorb shock and lessen hand fatigue during use
 - .Rigid stainless steel blades with go-through shaft, fast and efficient in separating spot welds, bonded panels, and other pinch welds on auto body repair work



CHILI	∠°	T(mm)	L (mm)	g	Box/Tray	CHILI	g	Box/Tray
ABS71T	0	6	300	298	5/60	ABS7T3X	1008	2/12
ABS73T	30	6	300	298	5/60			
ABS79T	90	6	245	298	5/60			

Packing way : tray



RAZOR SCRAPER

- Raw material: 420J2
- Grip/Body material: PP+TPR
- Blade material: Metal - K5 / Plastic- POM
- Finishing: Electro polished
- Features:

- .Ergonomic grip design with hanger hole
- .High abrasion-resistance, Double-Edge POM blades to prevent scratching on any finished surfaces
- .K5 razor blade at 0.5mm is twice as thick as standard razor blade
- .Ideal for removing labels, paint, glue, windowfilm and rust from glass, wood, metal, tile and windshield surfaces



CHILI	Blade		L (mm)		
	inch	mm			
ABG11T	1-1/2	40	232	164	6/36

Packing way : double blisters

POCKET MINI TYPE

- Body material: PP+TPR
- Blade material: Metal- K5 / Plastic- POM
- Features:

- .Pocket razor scraper with safety cap and easy to carry design



ABG141



ABG142

- Features:
- .Pocket razor scraper with retractable blade and easy to carry design
- .2pc blades storage in handle design



CHILI	Blade		L (mm)		
	inch	mm			
ABG141	1-1/2	40	108	56	12/72
ABG142	1-1/2	40	110	70	12/72

Packing way : double blisters



RAZOR SCRAPER SET



ACE

internal lattice structured handle

CHILI	PC/SET		
ABG1A2X	2	232	5/50

Packing way : double blister



CHILI	PC/SET		
ABG1T12X	12	282	6/48

Packing way : double blister



CHILI	PC/SET		
ABG11T21X	21	260	6/48

Packing way : double blister

RAZOR SCRAPER SET

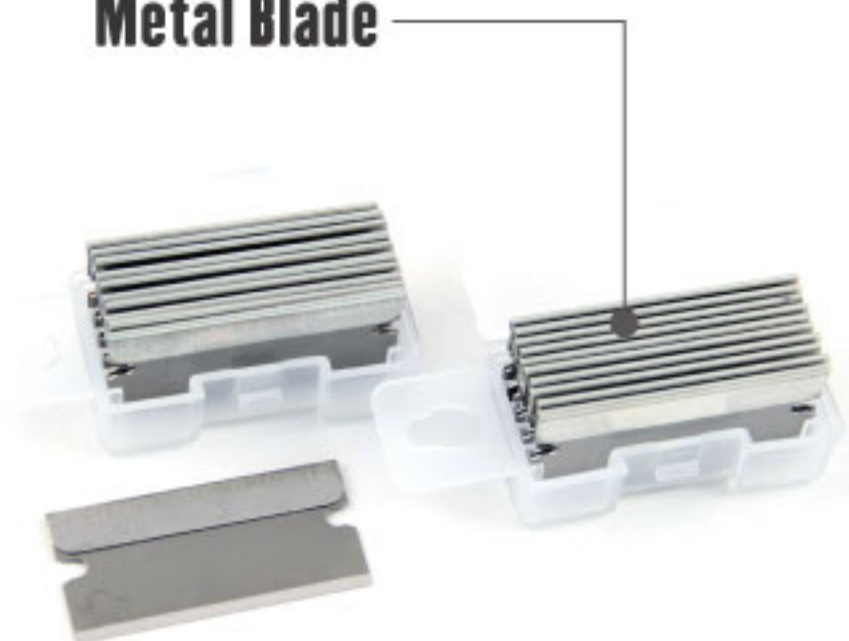


CHILI	PC/SET		
ABG1T24X	24	310	5/50

Packing way : double blister

SCRAPER BLADE SET

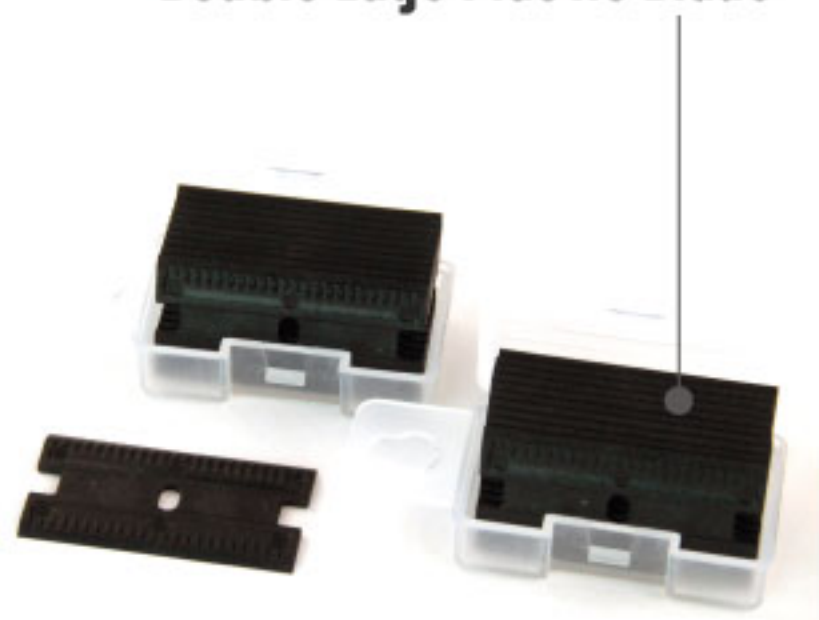
Metal Blade



CHILI	PC/SET		
ABG17M	21	116	6/36

Packing way : double blister

Double Edge Plastic Blade



CHILI	PC/SET		
ABG17P	21	56	6/36

Packing way : double blister

STIFF STRIKING SCRAPER

- Raw material: 420J2
- Grip material: PP+TPR
- Finishing: Mirror Polished
- Features:

- .Ergonomic solid grip design with hanger hole
- .Corrosion-resistant, hardened& tempered blade
- .Rigid blade with striking end cap as a great tools for scraping old gasket and the residue from engine blocks
- .Bent blade chisel scraper for easier application to remove the lead wheel weights from the wheel rim or hard-to-reach scraping work

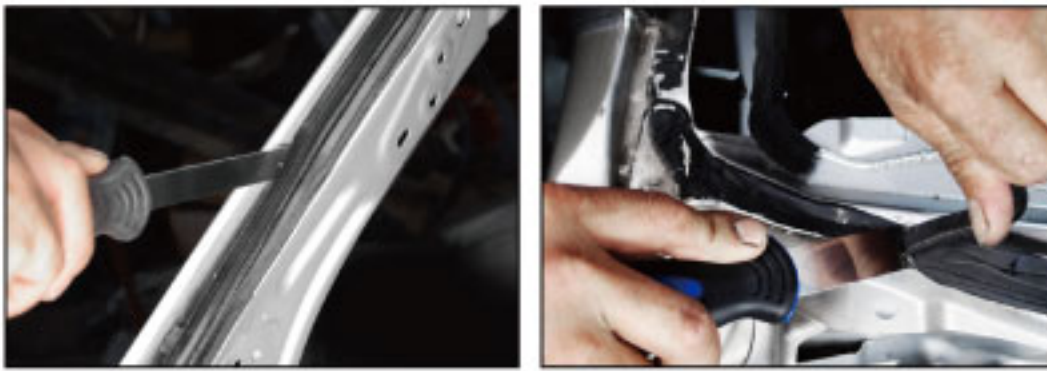


Figure	Blade		CHILI	L (mm)	g	Box
	inch	mm				
	1-1/4	32	BDS1TH-S1.2H	235	164	12/72
	1-1/4	32	BDS1TH-S1.2HB	232	164	12/72
	3	75	BDS1TH-S3H	245	200	12/72
	3	75	BDS1TH-S3HB	242	200	12/72
	3-1/4	80	BDS1TH-S3.2H	245	200	12/72
	4	100	BDS1TH-S4H	232	192	12/72
	4	100	BDS1TH-S4HB	229	192	12/72
	7	175	BDS1TH-S7H	232	240	12/72
	7	175	BDS1TH-S7HB	229	240	12/72



WINDSHIELD & PINCHWELD SCRAPER SET

- Raw material: 420J2
- Grip material: PP+TPR
- Finishing: Mirror Polished
- .Ergonomic, internal lattice structured handle design with hanger hole
- .Double bevel shape blade with short shaft ensure easy control and quick removal of the rubber seal residue
- .Single bevel shape blade with extra 2.5mm thick provide maximum strength and long shaft allow to go down into the U-Channel or hard-to-reach narrow spaces
- .Superior tools for removing the rubber adhesive seal strip during the repairing working of vehicle body (Doors, Hood, Trunk), windshield and scraping old sealant from the pinchweld before the re-bonding



CHILI	Blade		L (mm)	g	Box/Tray
	inch / mm	T(mm)			
ABSA3XS	1/2 13	1.5	170	525	12/24
	3/4 19	1.5	170		
	5/8 16	2.5	220		

Packing way : tray

WINDSHIELD & PINCHWELD SCRAPER SET

- Raw material: 420J2
- Grip material: PP+TPR
- Finishing: Mirror Polished
- .Ergonomic, internal lattice structured handle with Zinc Alloy end cap
- .Offer short and long shaft with extra 2.5mm thick rigid blade for advanced strength and durability
- .Wide blade is fast and efficient in removing the rubber seal with a one direction sliding
- .Superior tools for removing the rubber adhesive seal strip after take out a windshield, scraping old sealant and rubber seal residue from the vehicle body (Doors, Hood, Trunk) and pinchweld



CHILI	Blade		L (mm)	g	Box/Tray
	inch / mm	T(mm)			
ABSAH4XS	3/4 20	1.2	168	525	12/24
	3/4 20	2.5	168		
	1-1/4 32	1.2	220		
	1-1/4 32	2.5	220		

Packing way : tray

STAINLESS STEEL FLEXIBLE SCRAPER SET

- Raw material: 420J2
- Grip material: PP+TPR
- Finishing: Mirror polished
- Features:
 - .Ergonomic, internal lattice structured handle design with hanger hole
 - .Corrosion-resistant, hardened & tempered blade
 - .Specialized grind technology ensures edge of blade, tip and blade body are resistant to bending/breaking

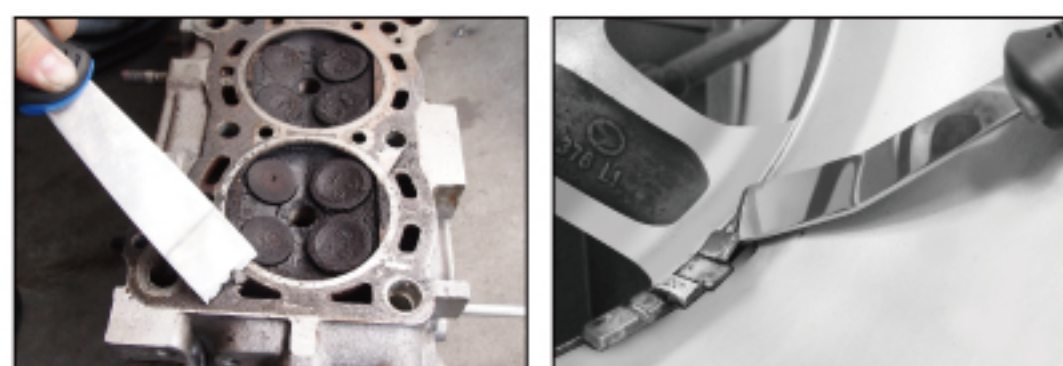


CHILI	Blade		L (mm)	g	Box/Tray
	inch / mm	T(mm)			
ABSA3XF	1-1/4	32	1	318	10/40
	2	50	1		
	3	75	1		

Packing way : tray

STAINLESS STEEL SCRAPER SET

- Raw material: 420J2
- Grip material: PP+TPR
- Finishing: Mirror Polished
- .Ergonomic, internal lattice structured handle design with hanger hole
- .Rigid blade with Zinc Alloy end cap as a great tools for scraping old gasket and the residue from engine blocks
- .Bent blade chisel scraper for easier application to remove the lead wheel weights from the wheel rim or hard-to-reach scraping work



CHILI	Blade		L (mm)	g	Box/Tray
	inch / mm	T(mm)			
ABSAH3XS	1-1/4	32	1.8	450	10/40
	1-1/4	32	1.8		
	2	50	1.8		

Packing way : tray

DOOR PANEL & TRIM CLIP REMOVAL TOOL SET

- Raw material: 420J2
- Grip material: PP+TPR
- Finishing: Mirror Polished

- .Ergonomic, internal lattice structured handle design with hanger hole
- .Unique patent blades design with specialized U and V-notch tips ensure removing all common types of trim clips and molding trim panel from door panel, upholstery, dashboard, radios
- .Rigid stainless steel blades are easy and fast operation without damage to the auto interior trims and trim clips



CHILI	Blade		L (mm)	g	Box/Tray
	inch / mm	T(mm)			
ABDA5X	1-1/4"	34	230	734	5/20
	1-1/4"	34	215		
	1-1/4"	34	215		
	1/2"	12	205		
	1/2"	12	205		

Packing way : tray

TRIM TOOL SET

- Raw material: 420J2
- Grip material: PP+TPR
- Finishing: Mirror Polished



CHILI	Blade		L (mm)	g	Box/Tray
	inch / mm	T(mm)			
ABDA2X	1/2"	12	205	236	15/90
	1/2"	12	205		

Packing way : tray

STEERING WHEEL TOOL KIT

- Raw material: CR-V
- Finishing: Phosphate Sunk
- Features:
 - .Hardened & tempered force plate
 - .Operation with puller together

CHILI	T mm	W mm	L mm	kg	
ABW11	5	90	430	1.45	-



IMPACT SOCKETS FOR WHEELS

- Raw material: CR-MO
- Finishing: Manganese Phosphate
- Features:
 - .Thin wall socket design for access in confined spaces
 - .High-Strength Impact Socket for up to 5x longer life than regular thin wall impact sockets
 - .Manganese Phosphate Coating to resist corrosion
 - .Protective outer sheath prevents damage to wheels



CHILI			L mm	B mm	kg	CHILI	PC/SET	kg	
	mm	inch							
IS42617M	17	1/2"	85	24.4	180	IS4263X	3	833	1/18
IS42619M	19	1/2"	85	26.4	210				
IS42621M	21	1/2"	85	28.4	250				

Packing way : blow case