

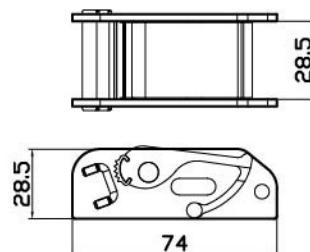
Cam Buckle



1" Cam Buckle

CB-CAM-01BK

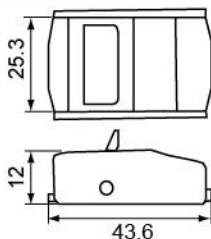
Size: 1"/25mm
 Material: Alloy Steel
 B.S: 500kg
 Finish: Electric black plated
 Optional Color Bottom
 Scratch proof pad



1" Cam Buckle

CB-CAM-01BK01

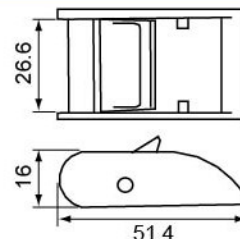
Size: 1"/25mm
 Material: Zinc Alloy
 B.S: 250kg
 Finish: Electric black plated



1" Cam Buckle

CB-CAM-01ZP

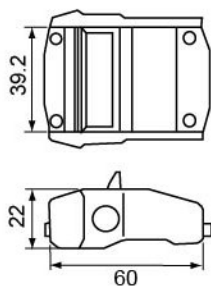
Size: 1"/25mm
 Material: Zinc Alloy
 B.S: 350kg
 Finish: Zinc plated



1.5" Cam Buckle

CB-CAM-015Z-03Z-ZP

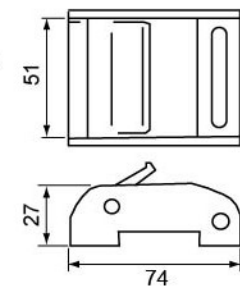
Size: 1.5"/35mm
 Material: Zinc Alloy
 B.S: 680kg
 Finish: Zinc plated



2" Cam Buckle

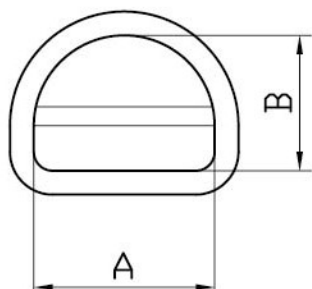
CB-CAM-02BK01

Size: 2"/50mm
 Material: Zinc Alloy
 B.S: 1200kg
 Finish: Electric black plated





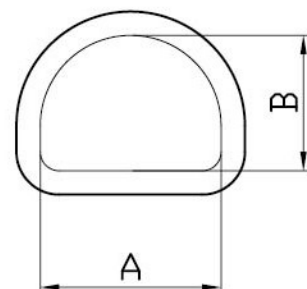
Stamped Buckle-01
STP-001



Item No.	A mm	B mm
FH44-061050062	45	45
FH44-06930542	54	54



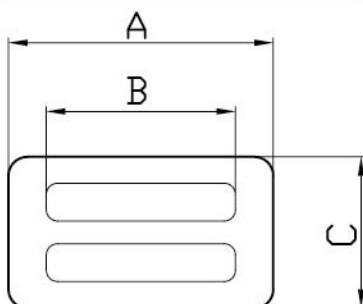
Stamped Buckle-02
STP-002



Item No.	A mm	B mm
FH44-0610562	45	45
FH44-06200478	47	33
FH44-0685068	49	48.5



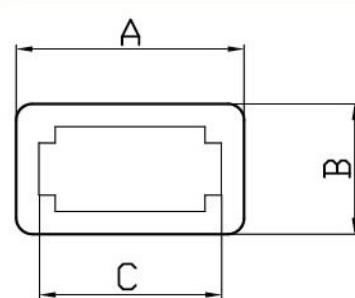
Stamped Buckle-03
STP-003



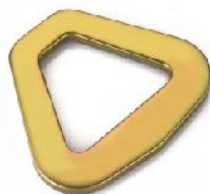
Item No.	A mm	B mm	C mm
FH44-0473028022	47.3	38.2	22
FH44-0500280380	49	38	38
FH44-060040030	60	46	30



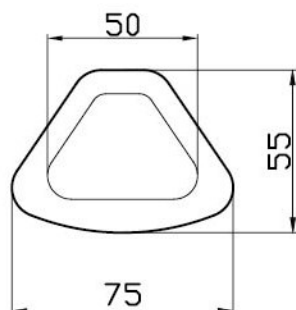
Stamped Buckle-04
STP-004



Item No.	A mm	B mm	C mm
FH44-063042	63	45	42
FH44-075045	75	53	45



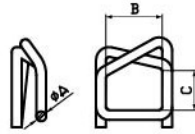
Stamped Buckle-05
STP-005



Buckle



Wire Buckle
BW01



Item No.	A mm	B mm	C mm	W.L.L (1bs)
BW01-009030019	3	19	9	480
BW01-013030019	3	19	13	480
BW01-016030025	3	25	16	680
BW01-016040025	4	25	16	680
BW01-019040025	4	25	19	930
BW01-019050025	5	25	19	950
BW01-027060027	6	27	27	1800
BW01-030070035	7	35	30	2500

*W.L.L=Working Load Limit



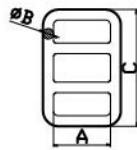
Lap Link
LK01



Item No.	A mm	B mm	Item No.	A mm	B mm
L01-035019	35	19	L01-063051	63	51
L01-040019	40	19	L01-080038	80	38
L01-050025	50	25	L01-095051	95	51
L01-060032	60	32	L01-120064	120	64
L01-060038	60	38			



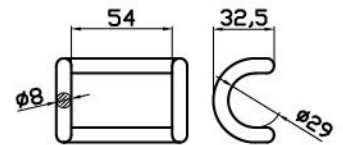
Eye Buckle/One Way Buckle
RR02



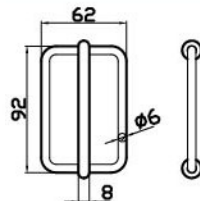
Item No.	A mm	B mm	C mm
RR02-045110110	45	11	110
RR02-055110115	55	11	115



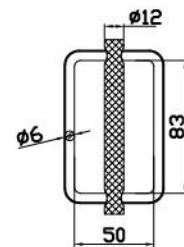
Rave Hook
WH03



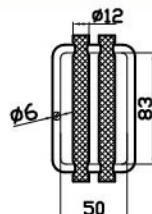
Adjuster Buckle
Buckle-01
SUS 304



Buckle with Anti-slip Adjuster
Buckle-02



Buckle with Dual Anti-slip Adjuster
Buckle-03
SUS 304



Tongue Buckle
Buckle-04

