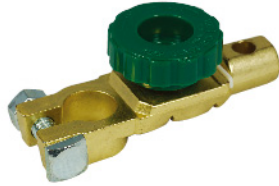


Battery Selectors & Battery Disconnect Switches
Circuit Breakers
Fuse Holders
Fuse Blocks
Battery Terminals & Terminal Blocks
Battery Jump Terminals

AES-1616-01

Wing Nut Marine Brass Terminals



AES-1616-02

Wing Nut Marine Brass Terminals



AES-1616-03

Wing Nut Marine Brass Terminals
(All Copper Plated)



AES-1616-04

Clamp Type Wing Nut Lead Terminal



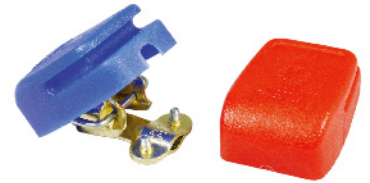
AES-1616-05

Angle Type P&N Brass Battery Terminal



AES-1616-06

Speed Power Battery Terminals



AES-1616-11

Terminal Block



AES-1616-11-10A

Terminal Block



AES-1616-11-10B

Terminal Block



AES-1616-11-10BC

Black Cover for Terminal Block



AES-1616-12-4

Terminal Block
For 4 terminals



AES-1616-12-12

Terminal Block
For 12 terminals



AES-1616-12-16

Terminal Block
For 16 terminals

Battery Selectors & Battery Disconnect Switches

Circuit Breakers

Fuse Holders

Fuse Blocks

Battery Terminals & Terminal Blocks

Battery Jump Terminals

Jumper Terminals designed to provide Remote mounting for Battery Connections either inside or outside of the vehicles.

Easily installed, the positive terminal can be individually used or in conjunction with the negative terminals as a pair.

Battery Jump Terminals

Brings 6-36V DC Power Through Bulkheads or Firewalls.

1-17/64" dia., 5/8" long.

2- 3/8" - 16 Thread Brass Stud Terminals, 5/8" long.

AES-1616-21B

Black Housing - Negative Terminal



AES-1616-21R

Red Housing - Positive Terminal



Battery Jump Terminals
With Rubber Caps.

Solid Brass Stud, Brass Hex Nuts and Brass Lockwashers.

Dimension for Grooved Contact Post:
13/16" dia., 1-1/8" long.

AES-1616-22B

Black Cap - Negative Terminal



AES-1616-22R

Red Cap - Positive Terminal

