

Battery Selectors & Battery Disconnect Switches

Circuit Breakers

Fuse Holders

Fuse Blocks

Battery Terminals & Terminal Blocks

Battery Jump Terminals

Waterproof Surface Mount & Panel Mount Circuit Breaker

Typically use in auxiliary and accessory circuits in truck, bus, RV and marine applications.

Rating: 42VDC Maximum, 50Amps to 200Amps

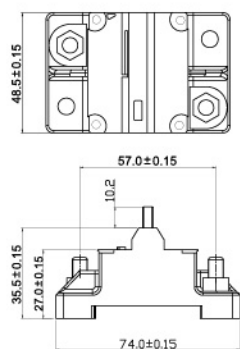
Interrupt Rating: 3000Amps at 30VDC.

Operating Temperature: -32°C to 82°C.

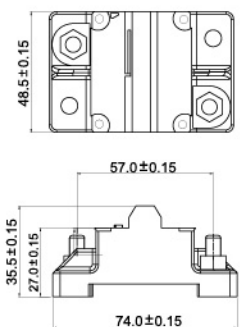
Meet: IP67

Surface Mount Type**AES-GCA series**

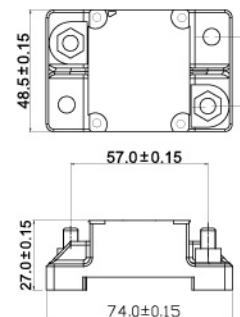
Manual Reset Type

**AES-GCA-A series**

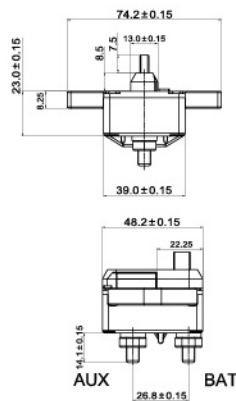
Manual Reset Type

**AES-GCA-B series**

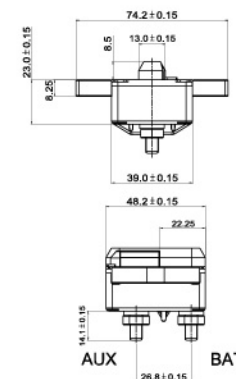
Automatic Reset Type

**Panel Mount Type****AES-GCB series**

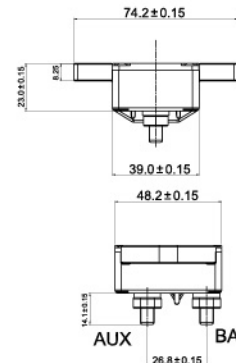
Manual Reset Type

**AES-GCB-A series**

Manual Reset Type

**AES-GCB-B series**

Automatic Reset Type



Battery Selectors & Battery Disconnect Switches

Circuit Breakers

Fuse Holders

Fuse Blocks

Battery Terminals & Terminal Blocks

Battery Jump Terminals

Stud Type Circuit Breaker

Auto Reset Circuit Breaker.

Terminals: Two # 10-32 stud.

Rating: 12VDC/24VDC, 10Amps to 50Amps

AES-1112-15A

Circuit Breaker with
Mounting Bracket & Nuts
Rated 20 Amps to 40 Amps



AES-1112-15B

Circuit Breaker
Rated 20 Amps to 40 Amps



AES-1112-15C



AES-1112-15CP



Thermal Type Circuit Breaker

Single Pole thermal circuit breaker, Thread neck mounting

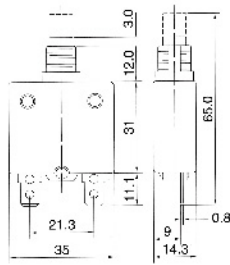
Rating: 50VDC Maximum, 3Amps to 100Amps

Interrupt Rating: 300Amps at 30VDC.

Operating Temperature: -32°C to 82°C.

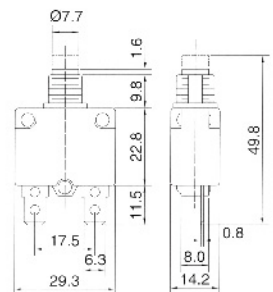
AES-ZE700

Amperage: 3 ~ 50Amps
Manual Push Reset
Accessory: Nameplate+Hex Nut



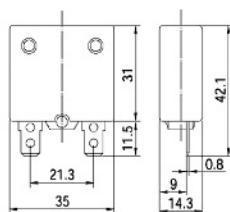
AES-ZE700S

Amperage: 3~20 Amps
Manual Push Reset



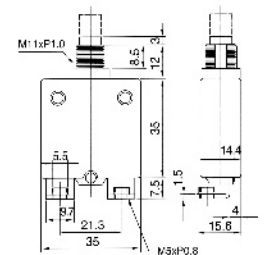
AES-ZE700-A

Amperage: 3 ~ 50Amps
Auto Reset



AES-ZE700L

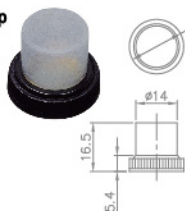
Amperage: 50~100 Amps
Manual Push Reset



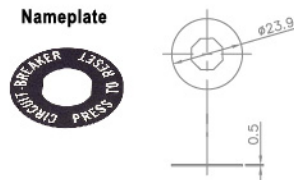
Accessory:

Parts

C:Cap



Nameplate



Nut

H:Hex Nut



K:Knurl Nut

