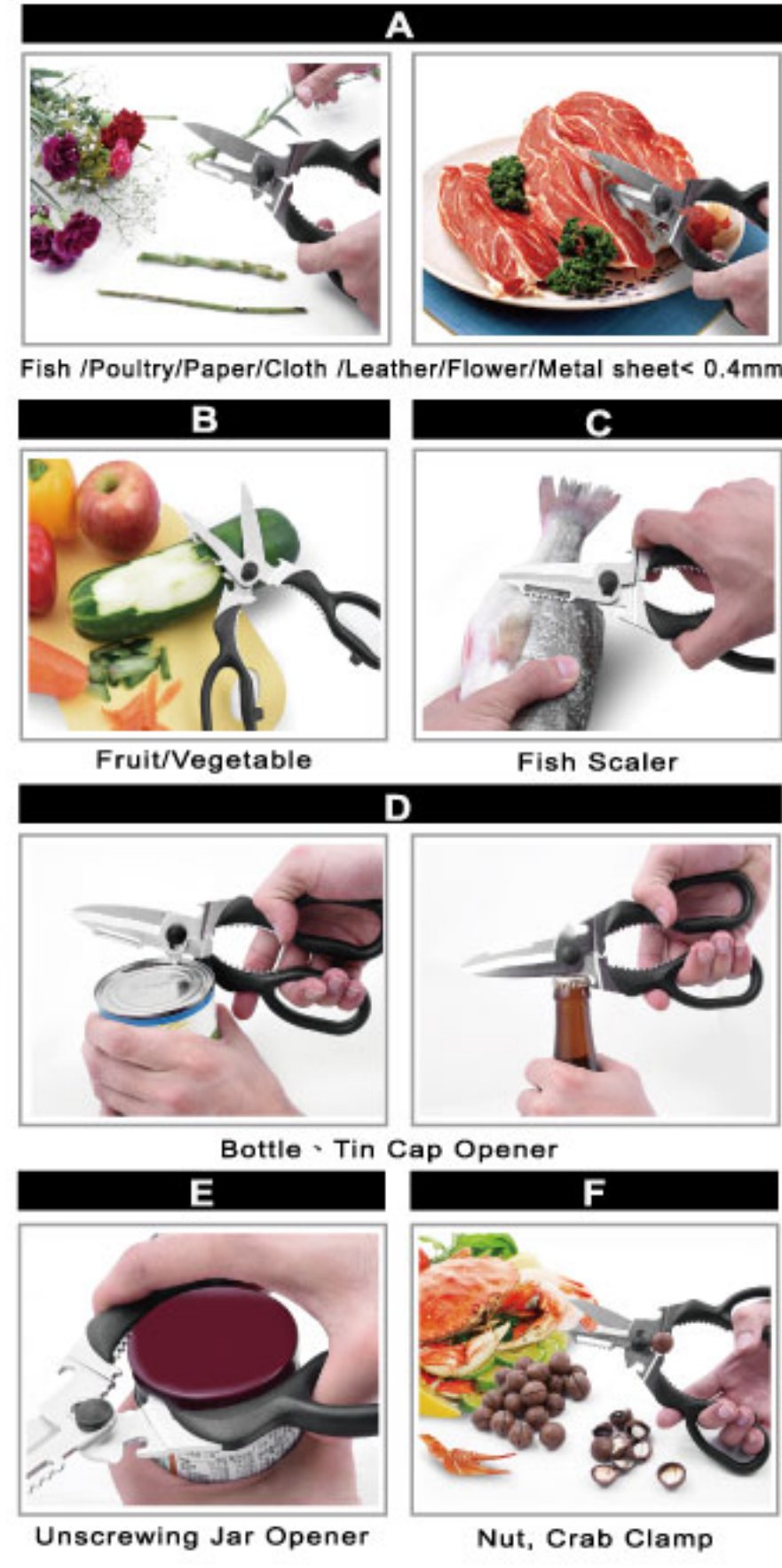


KITCHEN SCISSOR

- Raw material: 420J2
- Grip material: ABS
- Finishing: Electro Polished
- Features:

- .Corrosion-resistant, hardened & tempered blade
- .High leverage design to save strength
- .Sharp curved blades with special serrated edge design ensures non-slip, smooth cutting
- .Multi-function shears for kitchen and camping



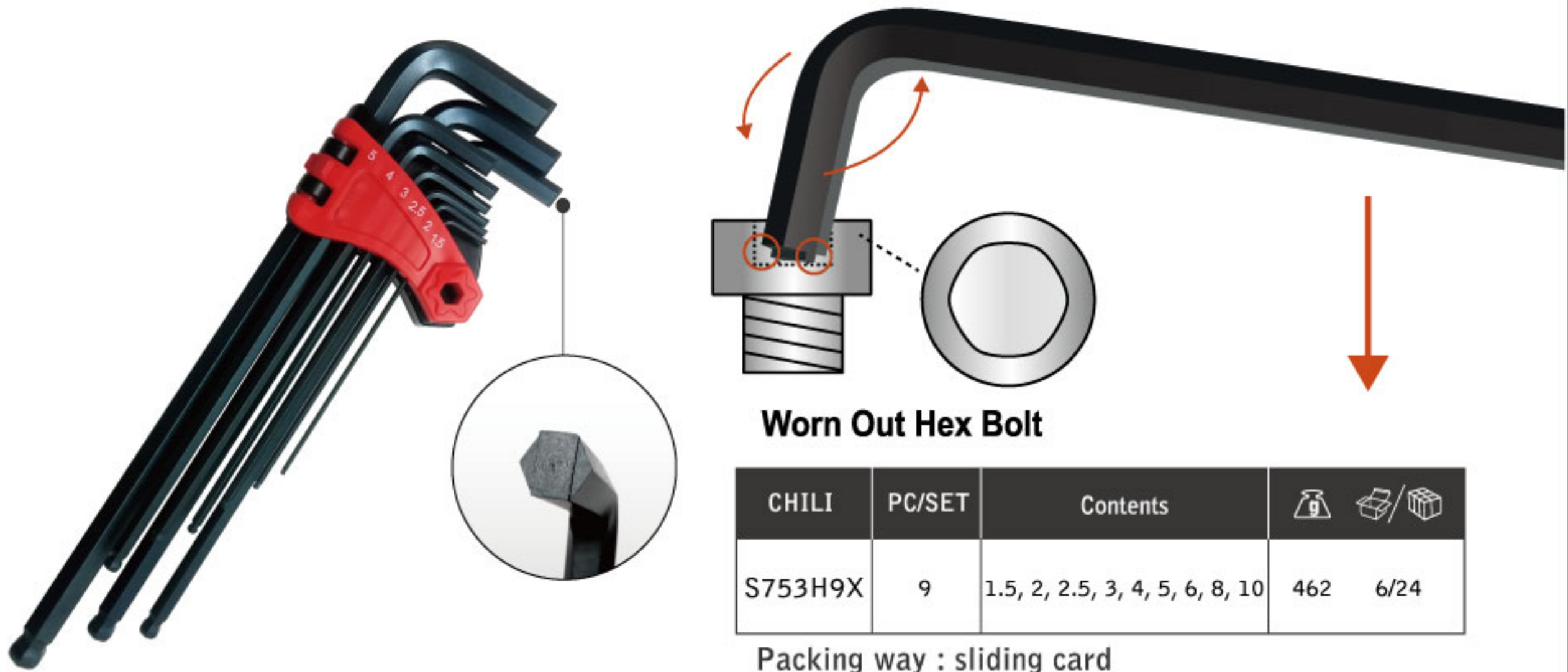
CHILI	T (mm)	ℓ (mm)	L (mm)	Weight	Box
C22130V	3.0	65	223	194	12/72

Packing way : sliding card

WORN-RIVAL HEX WRENCH

- Raw material: S2
- Finishing: Blue Satin
- Features:

- .Tip specialized patent design ensure be quick and efficient in loosening worn out hex bolt
- .Convex edge of tip is good working on severely hex bolt when pushing down and turning to force hex key
- .Reusable storage holder for easy tools retrieval



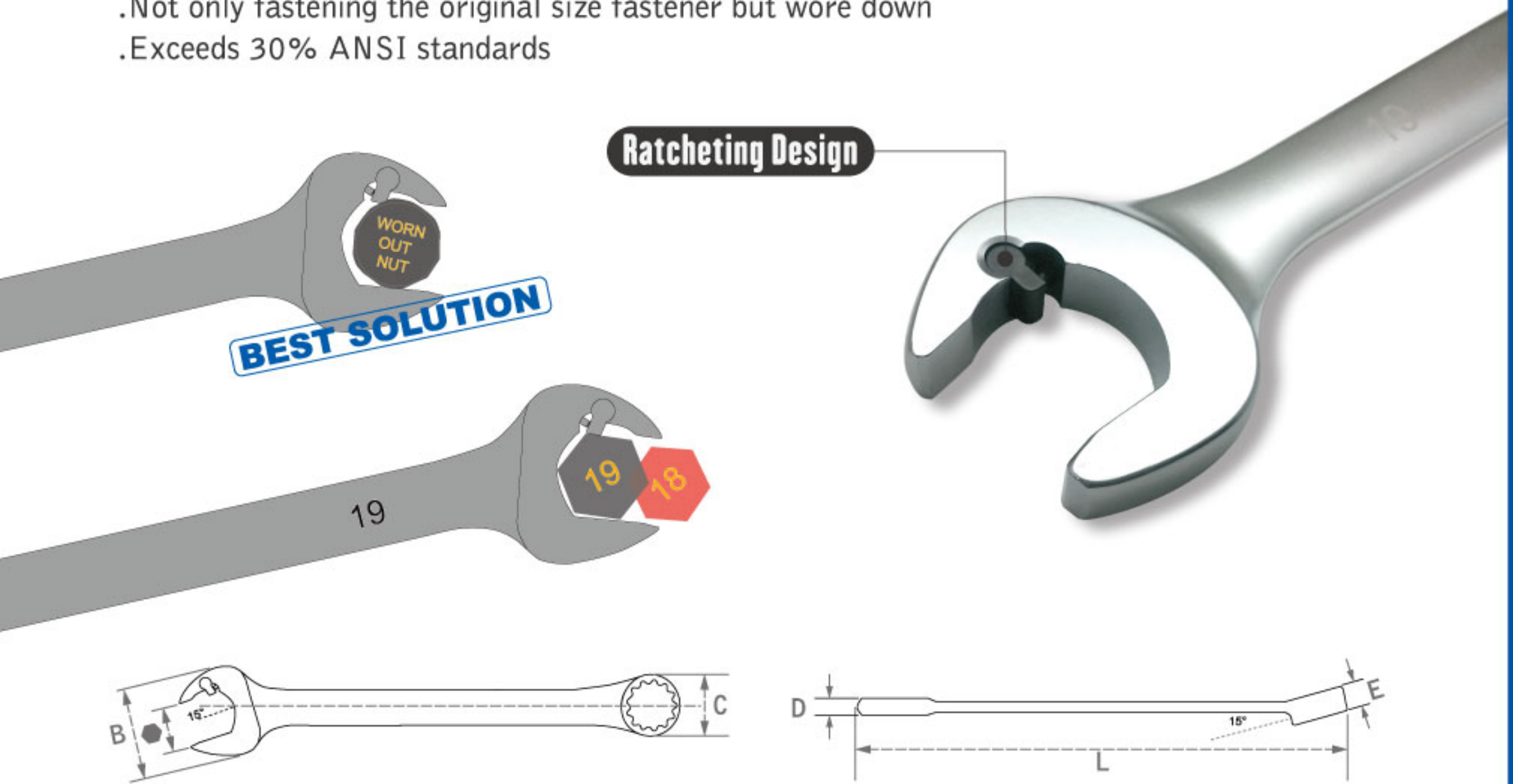
CHILI	PC/SET	Contents	Weight	Box
S753H9X	9	1.5, 2, 2.5, 3, 4, 5, 6, 8, 10	462	6/24

Packing way : sliding card

RATCHETING COMBINATION WRENCH

- Raw material: CR-V
- Finishing: Satin Chrome
- Features:

- .Fits into tight spots without taking the wrench off the fastener
- .Not only fastening the original size fastener but wore down
- .Exceeds 30% ANSI standards



CHILI	mm	L mm	B mm	C mm	D mm	E mm	g	12/36
WG30-08	08	143	20.1	13.6	5.2	6.4	35	12/36
WG30-10	10	161	24.0	16.1	6.2	7.0	46	12/36
WG30-12	12	174	27.6	19.2	6.8	8.3	73	12/36
WG30-13	13	180	29.9	20.0	7.0	8.2	77	12/36
WG30-14	14	192	32.1	21.8	7.2	8.9	97	12/36
WG30-17	17	226	38.1	26.9	8.4	10.7	159	12/36
WG30-19	19	249	42.7	29.1	9.6	12.1	219	12/36

7 PCS WRENCH SET



CHILI	PC/SET	Contents	g	12/36
WG307X	7	08, 10, 12, 13, 14, 17, 19 mm	933	12/36

RACHETING ADJUSTABLE WRENCH

- Raw material: CR-V

- Finishing: Chrome Plated

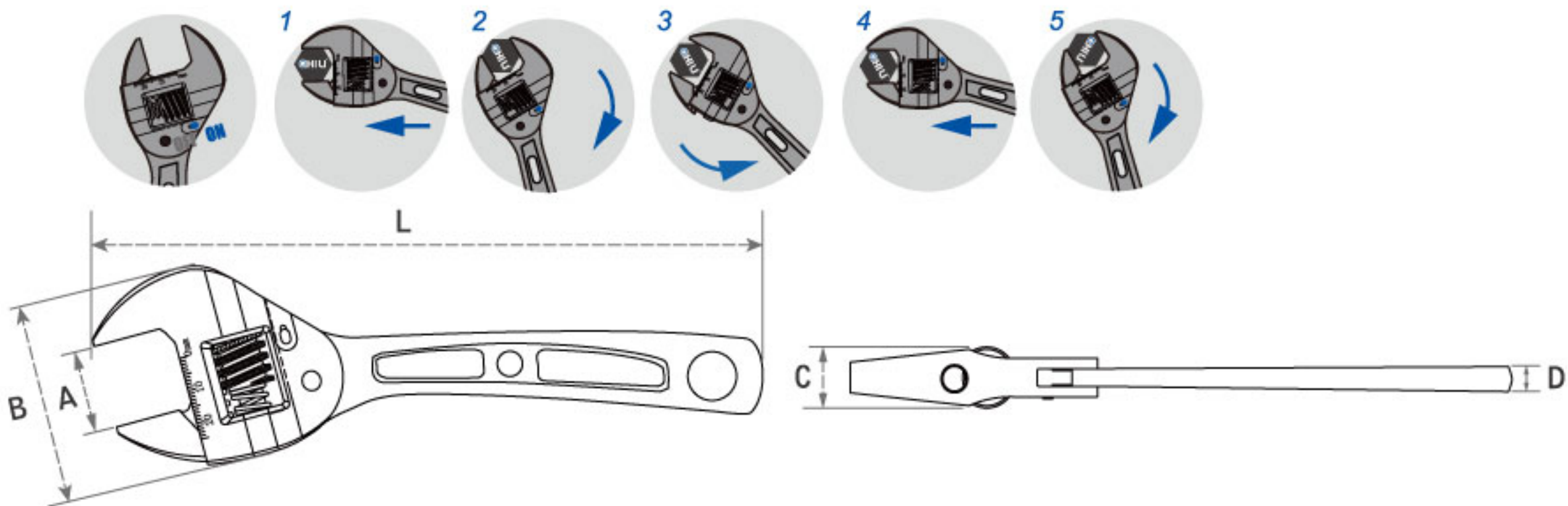
- Features:

- .Button: Ratcheting On/Off to be switched by a small button
- .Regular Mode: Works as a regular Adjustable Wrench
- .Ratcheting Mode: Works as regular ratchet handle
- .Chrome-Vanadium Alloy Steel to generate more strength and durability
- .The torsion exceeds ASME standard more than 20% ↑
- .Time saving and friendly using



Users can select either On or Off to operate in different circumstances.
When turning Off, AR Series could be operated as a normal adjustable wrench;
When turning On, it could be turned into a high speed craft.

Button ON : Operation Instruction



CHILI	A		L		B	C	D	g	Box/Case
	mm	inch	mm	mm	mm	mm			
WA10-06R	20.5	6"	150	46.3	11.9	5.5	140	12/36	
WA10-08R	25.5	8"	200	59.3	16.1	6.8	315	12/36	
WA10-10R	34.5	10"	250	72.5	16.3	8.3	455	12/36	

