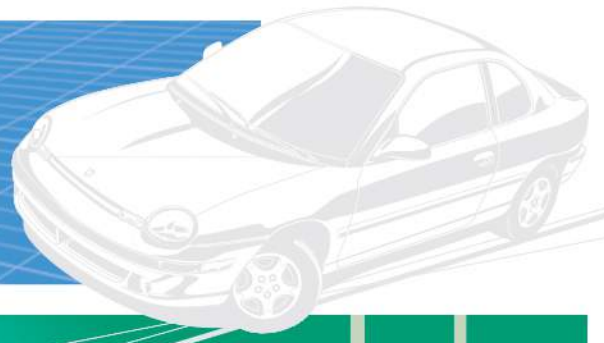


WORK LAMPS



WORK LAMPS

SIRIOS

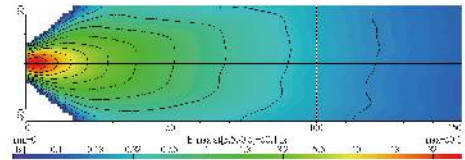
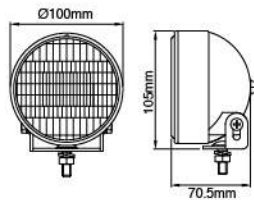




NS-1102 Flood Beam Work Lamp



- Fiber reinforced hi-impact plastic housing
- Metal reflector
- Steel mounting bracket, black
- Easy bulb replacement
- Halogen bulb: H3 12V 55W

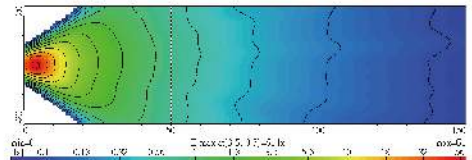
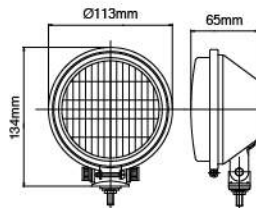


Part NO.	Description
NS-1102F-12	Flood H3 12V

NS-1105 Flood Beam Work Lamp



- Reinforced metal housing and stainless steel frame
- Metal reflector
- Steel mounting bracket, zinc-plated
- Easy bulb replacement
- Halogen bulb: H3 12V 55W
- Options: H3 24V 70W available upon request

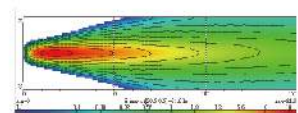
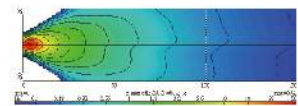
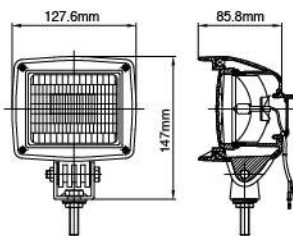


Part NO.	Description
NS-1105F-12	Flood H3 12V
NS-1105F-24	Flood H3 24V

NS-1108 Flood or Spot Beam Work Lamp



- Fiber reinforced hi-impact plastic housing
- Metal reflector
- Stainless steel mounting bracket
- Pedestal mount
- Halogen bulb: H3 12V 55W
- Options: H3 24V 70W available upon request



Part NO.	Description
NS-1108F-12	Flood H3 12V
NS-1108F-24	Flood H3 24V
NS-1108S-12	Spot H3 12V
NS-1108S-24	Spot H3 24V

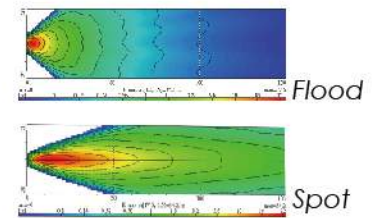
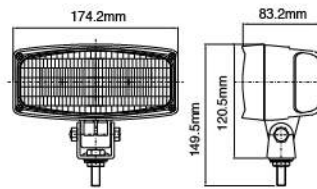


NS-1109 Flood or Spot Beam Twin Work Lamp



- Ingress Protection IP66
- Fiber reinforced hi-impact plastic housing
- Twin metal reflector for maximum beam output
- Stainless steel mounting bracket
- Halogen bulb: H3 12V 55W
- Options: H3 24V 70W available upon request

Part NO.	Description
NS-1109F-12	Flood H3 12V
NS-1109F-24	Flood H3 24V
NS-1109S-12	Spot H3 12V
NS-1109S-24	Spot H3 24V

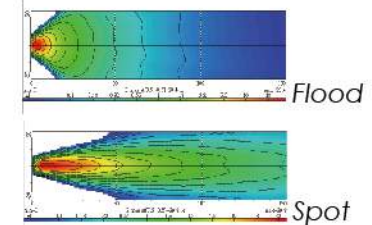
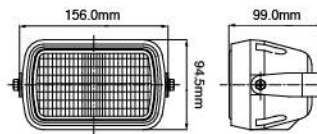


NS-1111 Flood or Spot Beam Work Lamp



- Fiber reinforced hi-impact plastic housing
- Metal reflector
- Steel mounting bracket, black
- Halogen bulb: H3 12V 55W
- Options: H3 24V 70W available upon request

Part NO.	Description
NS-1111F-12	Flood H3 12V
NS-1111F-24	Flood H3 24V
NS-1111S-12	Spot H3 12V
NS-1111S-24	Spot H3 24V

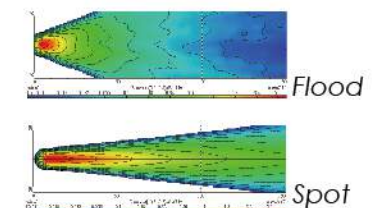
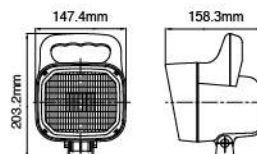


NS-1112 Flood or Spot Beam Halogen Work Lamp



- Fiber reinforced hi-impact plastic housing
- Metal reflector
- Stainless steel mounting bracket
- Top mounted handle
- Pedestal mount
- Fitted with ON/OFF rocker switch
- Wide square beam output
- Halogen bulb: H3 12V 55W
- Options: H3 24V 70W available upon request

Part NO.	Description
NS-1112F-12	Flood H3 12V
NS-1112F-24	Flood H3 24V
NS-1112S-12	Spot H3 12V
NS-1112S-24	Spot H3 24V



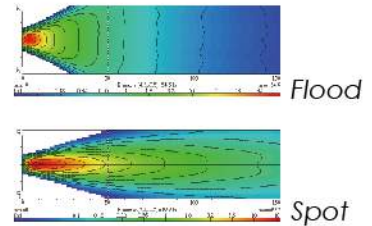
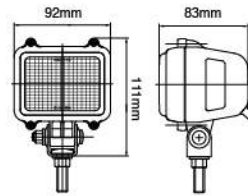


NS-1113 Flood or Spot Beam Compact Work Lamp



- Fiber reinforced hi-impact plastic housing
- Metal reflector
- Steel mounting bracket, zinc-yellow
- Easy bulb replacement
- Halogen bulb: H3 12V 55W

Flood	Spot
Part NO.	Description
NS-1113F-12	Flood H3 12V
NS-1113S-12	Spot H3 12V

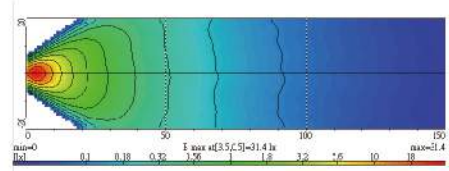
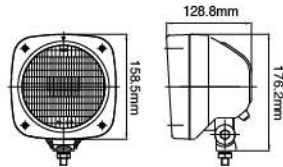


NS-1114 Flood Beam Work Lamp



- Fiber reinforced hi-impact plastic housing
- Metal reflector
- Steel mounting bracket, zinc-plated
- Halogen bulb: H3 12V 55W
- Options: H3 24V 70W available upon request

Part NO.	Description
NS-1114F-12	Flood H3 12V
NS-1114F-24	Flood H3 24V

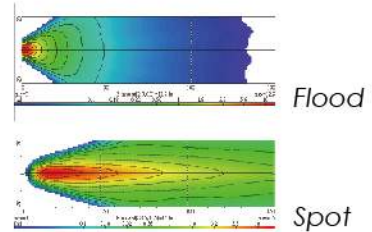
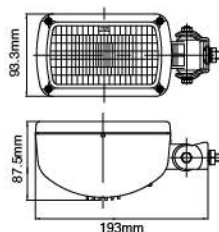


NS-1115 Flood or Spot Beam Work Lamp



- Fiber reinforced hi-impact plastic housing
- Metal reflector
- Steel mounting bracket, zinc-plated
- Side mounted
- Halogen bulb: H3 12V 55W
- Options: H3 24V 70W available upon request

Part NO.	Description
NS-1115F-12	Flood H3 12V
NS-1115F-24	Flood H3 24V
NS-1115S-12	Spot H3 12V
NS-1115S-24	Spot H3 24V



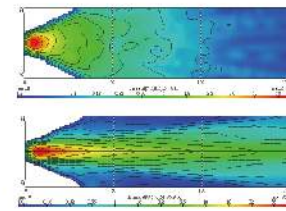
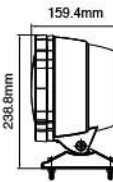
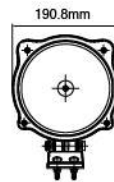


NS-1116 Flood or Spot Beam Halogen Work Lamp ↗ ↗



Part NO.	Description
NS-1116F-12	Flood H3 12V
NS-1116F-24	Flood H3 24V
NS-1116S-12	Spot H3 12V
NS-1116S-24	Spot H3 24V

- Fiber reinforced hi-impact plastic housing
- Metal reflector
- Angle adjustment: 10° up and down
- Pedestal mount
- Halogen bulb: H3 12V 55W
- Options: H3 24V 70W available upon request

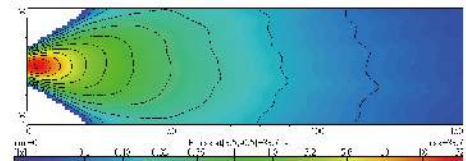
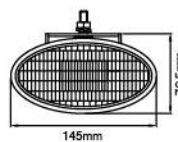


NS-1168 Flood Beam Work Lamp ↗ ↗



Part NO.	Description
NS-1168F-12	Flood H3 12V

- Fiber reinforced hi-impact plastic housing
- Metal reflector
- Steel mounting bracket, black
- Halogen bulb: H3 12V 55W

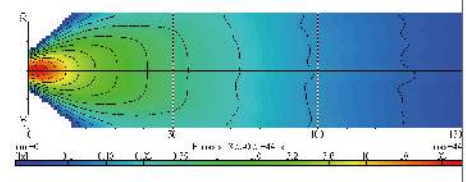
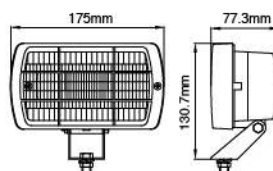


NS-1174 Flood Beam Work Lamp ↗ ↗



Part NO.	Description
NS-1174F-12	Flood H3 12V

- Fiber reinforced hi-impact plastic housing
- Metal reflector
- Steel mounting bracket, zinc-yellow
- With plastic stone guard
- Halogen bulb: H3 12V 55W



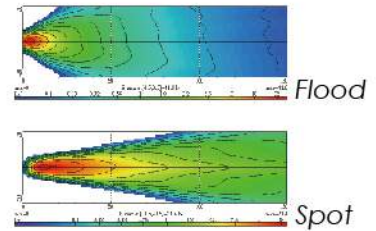
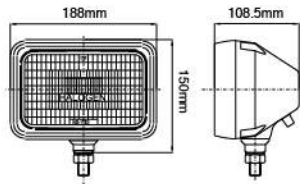


NS-1183 Flood or Spot Beam Work Lamp ↗ ↘



- Fiber reinforced hi-impact plastic housing
- Metal reflector
- Halogen bulb: H3 12V 55W
- Options: H3 24V 70W available upon request

Part NO.	Description	
NS-1183F-12	Flood	H3 12V
NS-1183F-24	Flood	H3 24V
NS-1183S-12	Spot	H3 12V
NS-1183S-24	Spot	H3 24V

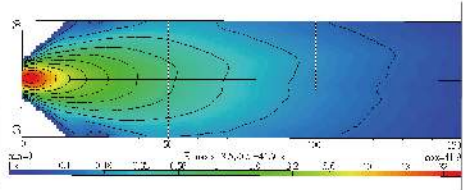
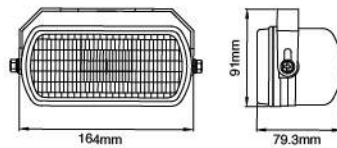


NS-1188 Flood Beam Work Lamp ↗ ↘



- Fiber reinforced hi-impact plastic housing
- Metal reflector
- Steel mounting bracket, black
- Halogen bulb: H3 12V 55W

Part NO.	Description	
NS-1188F-12	Flood	H3 12V

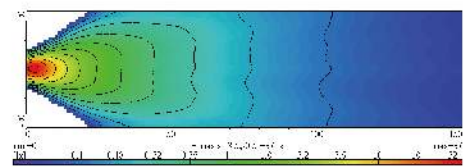
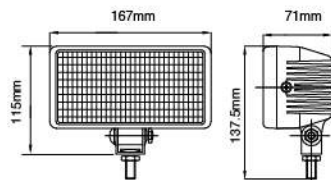


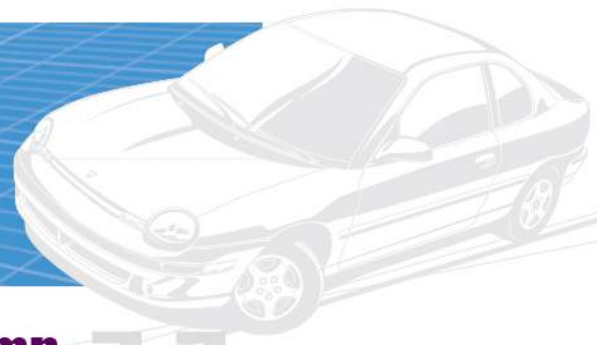
NS-1198 Flood Beam Work Lamp ↗ ↘



- Fiber reinforced hi-impact plastic housing
- Metal reflector
- Steel mounting bracket, zinc-yellow
- Halogen bulb: H3 12V 55W
- Options: H3 24V 70W available upon request

Part NO.	Description	
NS-1198F-12	Flood	H3 12V
NS-1198F-24	Flood	H3 24V



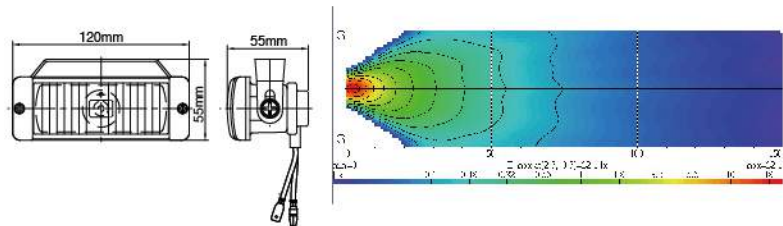


NS-1517 Flood Beam Work Lamp



- Reinforced metal housing
- Metal reflector
- Steel mounting bracket, black
- Halogen bulb: H3 12V 55W

Part NO.	Description
NS-1517F-12	Flood H3 12V

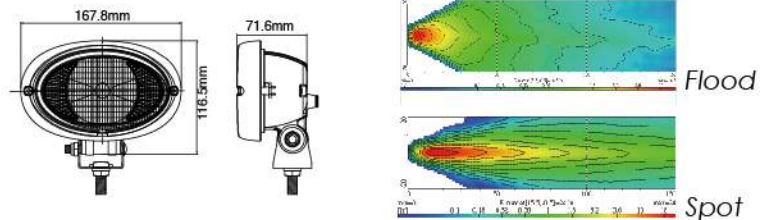


NS-2501 Single Flood or Spot Beam Work Lamp



- Fiber reinforced hi-impact plastic housing and frame
- Aluminum reflector
- Stainless steel mounting bracket
- Halogen bulb: H3 12V 55W
- Options: H3 24V 70W available upon request
Steel mounting bracket, zinc-yellow available upon request

Part NO.	Description
NS-2501F-12	Flood H3 12V
NS-2501F-24	Flood H3 24V
NS-2501S-12	Spot H3 12V
NS-2501S-24	Spot H3 24V

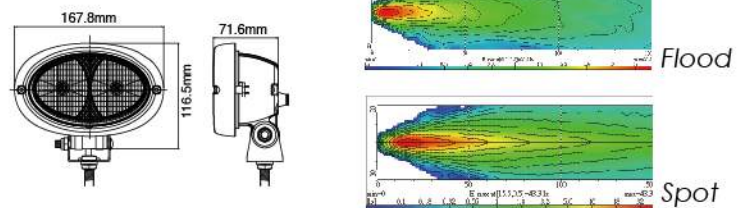


NS-2502 Double Flood or Spot Beam Work Lamp



- Fiber reinforced hi-impact plastic housing and frame
- Aluminum reflector
- Stainless steel mounting bracket
- Halogen bulb: H3 12V 55W
- Options: H3 24V 70W available upon request
Steel mounting bracket, zinc-yellow available upon request

Part NO.	Description
NS-2502F-12	Flood H3 12V
NS-2502F-24	Flood H3 24V
NS-2502S-12	Spot H3 12V
NS-2502S-24	Spot H3 24V



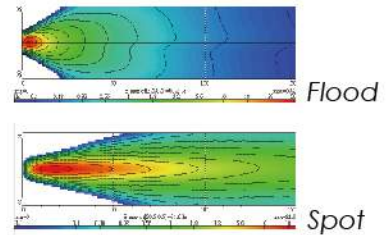
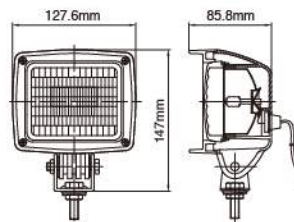


NS-2507 Flood or Spot Beam Work Lamp



- Ingress Protection IP66
- Fiber reinforced hi-impact plastic housing
- Metal reflector
- Stainless steel mounting bracket
- Pedestal mount
- Halogen bulb: H3 12V 55W
- Options: H3 24V 70W available upon request

Part NO.	Description
NS-2507F-12	Flood H3 12V
NS-2507F-24	Flood H3 24V
NS-2507S-12	Spot H3 12V
NS-2507S-24	Spot H3 24V

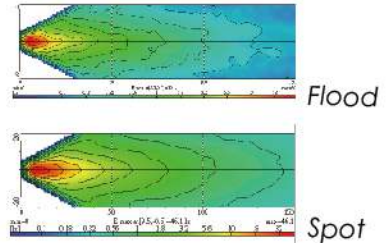
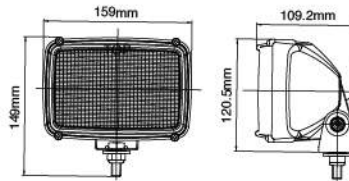


NS-2508 Double Flood or Spot Beam Work Lamp



- Fiber reinforced hi-impact plastic housing and frame
- Aluminum reflector
- Stainless steel mounting bracket
- Halogen bulb: H3 12V 55W
- Options: H3 24V 70W available upon request
Steel mounting bracket, zinc-yellow available upon request

Part NO.	Description
NS-2508F-12	Flood H3 12V
NS-2508F-24	Flood H3 24V
NS-2508S-12	Spot H3 12V
NS-2508S-24	Spot H3 24V

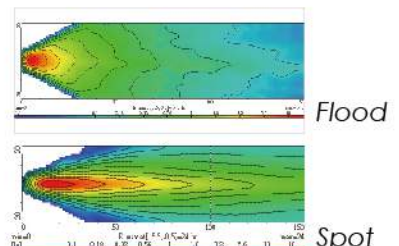
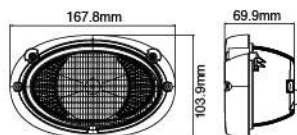


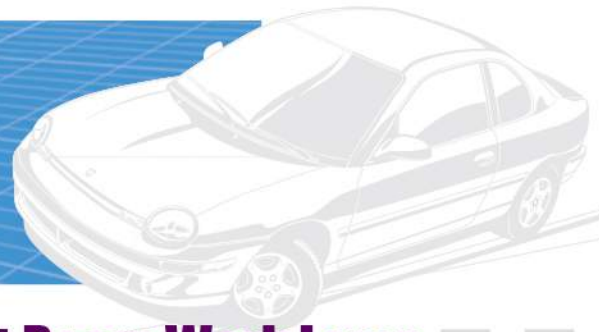
NS-2509 Single Flood or Spot Beam Work Lamp



- Fiber reinforced hi-impact plastic housing and frame
- Aluminum reflector
- Flush mount
- Halogen bulb: H3 12V 55W
- Options: H3 24V 70W available upon request

Part NO.	Description
NS-2509F-12	Flood H3 12V
NS-2509F-24	Flood H3 24V
NS-2509S-12	Spot H3 12V
NS-2509S-24	Spot H3 24V



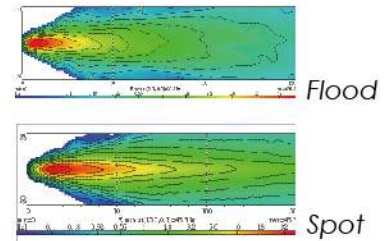
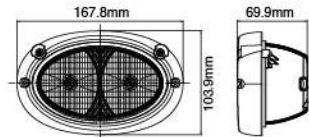


NS-2510 Double Flood or Spot Beam Work Lamp



- Fiber reinforced hi-impact plastic housing and frame
- Aluminum reflector
- Flush mount
- Halogen bulb: H3 12V 55W
- Options: H3 24V 70W available upon request

Part NO.	Description
NS-2510F-12	Flood H3 12V
NS-2510F-24	Flood H3 24V
NS-2510S-12	Spot H3 12V
NS-2510S-24	Spot H3 24V

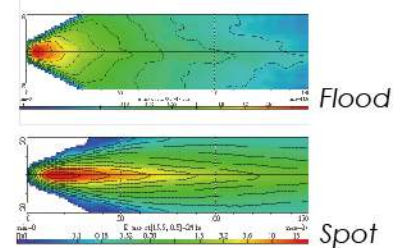
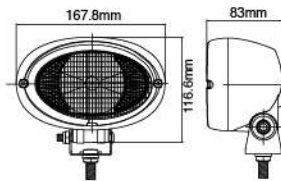


NS-2511 Single Flood or Spot Beam Work Lamp



- Ingress Protection IP66
- Fiber reinforced hi-impact plastic housing and frame
- Aluminum reflector
- Stainless steel mounting bracket
- Halogen bulb: H3 12V 55W
- Options: H3 24V 70W available upon request
Steel mounting bracket, zinc-yellow available upon request

Part NO.	Description
NS-2511F-12	Flood H3 12V
NS-2511F-24	Flood H3 24V
NS-2511S-12	Spot H3 12V
NS-2511S-24	Spot H3 24V

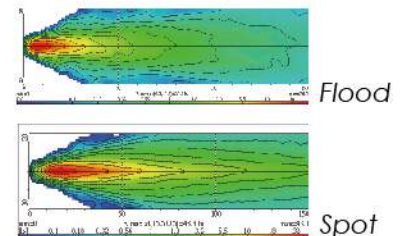
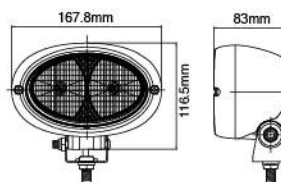


NS-2512 Double Flood or Spot Beam Work Lamp



- Ingress Protection IP66
- Fiber reinforced hi-impact plastic housing and frame
- Aluminum reflector
- Stainless steel mounting bracket
- Halogen bulb: H3 12V 55W
- Options: H3 24V 70W available upon request
Steel mounting bracket, zinc-yellow available upon request

Part NO.	Description
NS-2512F-12	Flood H3 12V
NS-2512F-24	Flood H3 24V
NS-2512S-12	Spot H3 12V
NS-2512S-24	Spot H3 24V



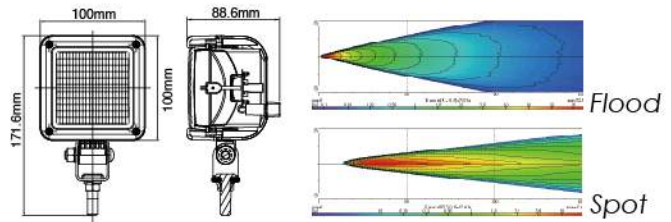


NS-2525 Flood or Spot Beam Work Lamp ↗ ↘



- Ingress Protection IP66
- Fiber reinforced hi-impact plastic housing
- Metal reflector
- Fit 2 pin AMP connector or equivalent
- Steel mounting bracket, zinc-yellow
- Halogen bulb: H3 12V 55W
- Options: H3 24V 70W available upon request

Part NO.	Description
NS-2525F-12	Flood H3 12V
NS-2525F-24	Flood H3 24V
NS-2525S-12	Spot H3 12V
NS-2525S-24	Spot H3 24V

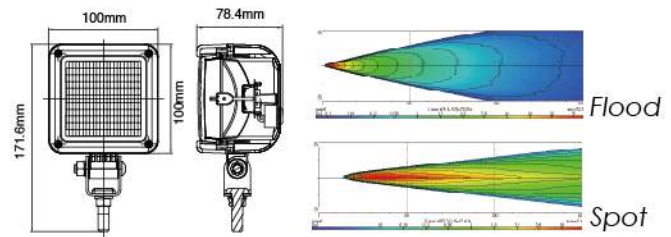


NS-2526 Flood or Spot Beam Work Lamp ↗ ↘



- Ingress Protection IP66
- Fiber reinforced hi-impact plastic housing
- Metal reflector
- Fly lead wire
- Steel mounting bracket, zinc-yellow
- Halogen bulb: H3 12V 55W
- Options: H3 24V 70W available upon request

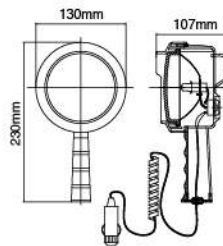
Part NO.	Description
NS-2526F-12	Flood H3 12V
NS-2526F-24	Flood H3 24V
NS-2526S-12	Spot H3 12V
NS-2526S-24	Spot H3 24V



NS-001 Hand Search Lamp ↗ ↘



- Plastic housing
- With spiral cord and universal plug fit to cigarette lighter
- Casing color: black/white
- Crystal glass lens
- Halogen bulb: H3 12V 55W



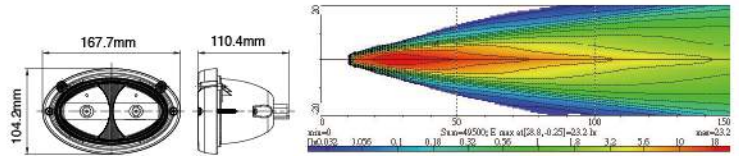


NS-2562 Double Spot Beam Work Lamp



- Fiber reinforced hi-impact plastic housing and frame
- Aluminum reflector
- Flush mount
- Halogen bulb: H3 12V 55W

Part NO.	Description
NS-2562S-12	Spot H3 12V

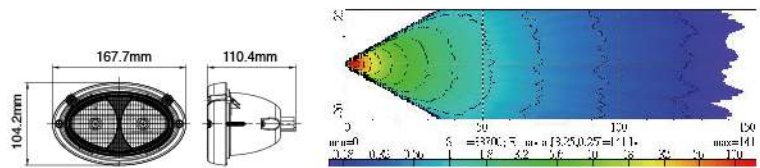


NS-2563 Double Flood Beam Work Lamp



- Fiber reinforced hi-impact plastic housing and frame
- Aluminum reflector
- Flush mount
- Halogen bulb: H3 12V 55W

Part NO.	Description
NS-2563F-12	Flood H3 12V

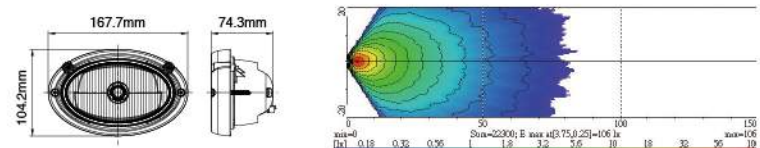


NS-2564 Single Flood Beam Work Lamp



- Fiber reinforced hi-impact plastic housing and frame
- Aluminum reflector
- Flush mount
- Halogen bulb: H9 12V 65W

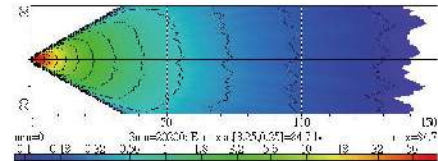
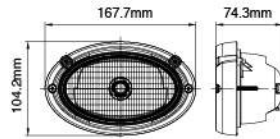
Part NO.	Description
NS-2564F-12	Flood H9 12V





NS-2565 Single Flood Beam Work Lamp ↗ ↘

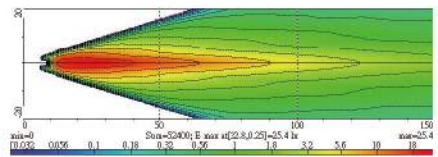
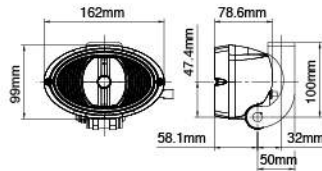
- Fiber reinforced hi-impact plastic housing and frame
- Aluminum reflector
- Flush mount
- Halogen bulb: H9 12V 65W



Part NO.	Description
NS-2565F-12	Flood H9 12V

NS-2566 Single Spot Beam Work Lamp ↗ ↘

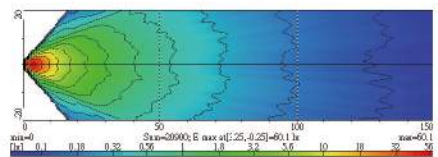
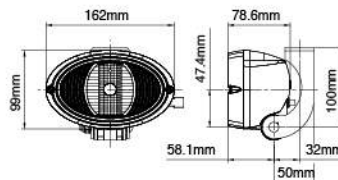
- Fiber reinforced hi-impact plastic housing and frame
- Aluminum reflector
- Steel mounting bracket, black
- Halogen bulb: H3 12V 55W



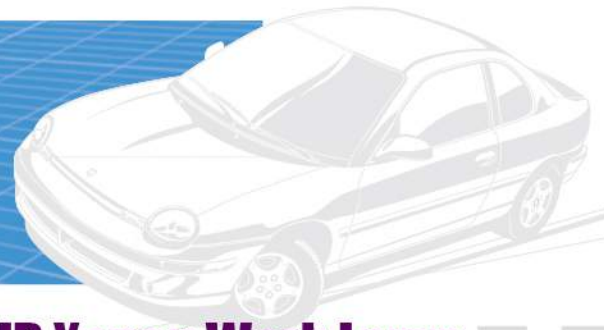
Part NO.	Description
NS-2566S-12	Spot H3 12V

NS-2567 Single Flood Beam Work Lamp ↗ ↘

- Fiber reinforced hi-impact plastic housing and frame
- Aluminum reflector
- Steel mounting bracket, black
- Halogen bulb: H3 12V 55W



Part NO.	Description
NS-2567F-12	Flood H3 12V



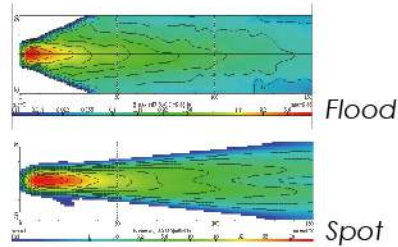
NS-1112 Flood or Spot Beam HID Xenon Work Lamp



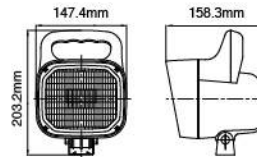
Flood

Spot

- Fiber reinforced hi-impact plastic housing
- Metal reflector
- Stainless steel mounting bracket
- Top mounted handle
- Pedestal mount
- Fitted with ON/OFF rocker switch
- Wide square beam output
- HID Xenon bulb: D1S 12V 35W
- Options: D1S 24V 35W available upon request



Part NO.	Description
NS-1112F-12	Flood HID 12V
NS-1112F-24	Flood HID 24V
NS-1112S-12	Spot HID 12V
NS-1112S-24	Spot HID 24V



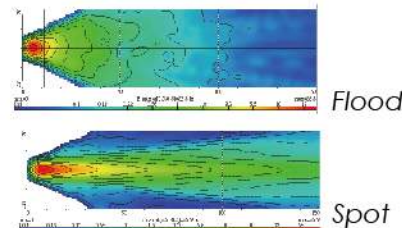
NS-1116 Flood or Spot Beam HID Xenon Work Lamp



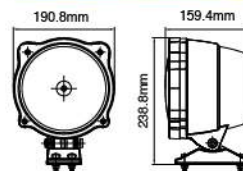
Flood

Spot

- Fiber reinforced hi-impact plastic housing
- Metal reflector
- Angle adjustment: 10° up and down
- Pedestal mount
- HID Xenon bulb: D1S 12V 35W
- Options: D1S 24V 35W available upon request



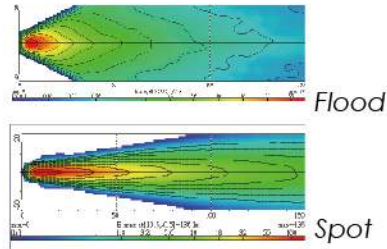
Part NO.	Description
NS-1116F-12	Flood HID 12V
NS-1116F-24	Flood HID 24V
NS-1116S-12	Spot HID 12V
NS-1116S-24	Spot HID 24V



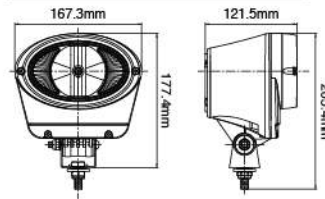


NS-2503 Flood or Spot Beam HID Xenon Compact Work Lamp

- Fiber reinforced hi-impact plastic housing and frame
- Aluminum reflector
- Stainless steel mounting bracket
- Pendant or pedestal mounting
- Ballast integrated into housing
- HID Xenon bulb: D1S 12V 35W
- Options: D1S 24V 35W available upon request

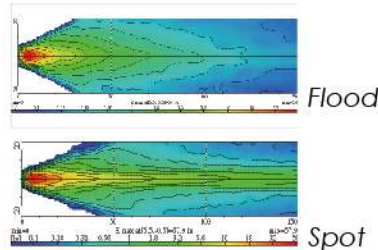


Part NO.	Description
NS-2503F-12	Flood HID 12V
NS-2503F-24	Flood HID 24V
NS-2503S-12	Spot HID 12V
NS-2503S-24	Spot HID 24V

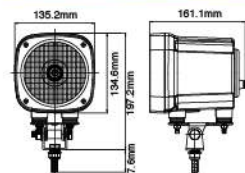


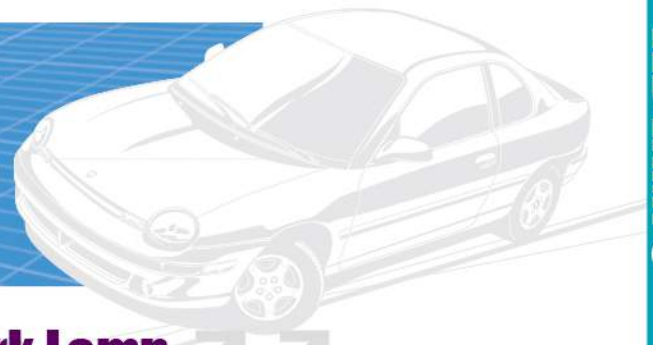
NS-2514 Flood or Spot Beam HID Xenon Compact Work Lamp

- Ingress Protection IP66
- Fiber reinforced hi-impact plastic housing and frame
- Metal reflector for extreme output
- Stainless steel mounting bracket
- Pedestal mount
- Bulb replaceable from the front or back
- Shock-resistant rubber absorber
- Ballast built into the housing
- HID Xenon bulb: D1S 12V 35W
- Options: D1S 24V 35W available upon request



Part NO.	Description
NS-2514F-12	Flood HID 12V
NS-2514F-24	Flood HID 24V
NS-2514S-12	Spot HID 12V
NS-2514S-24	Spot HID 24V

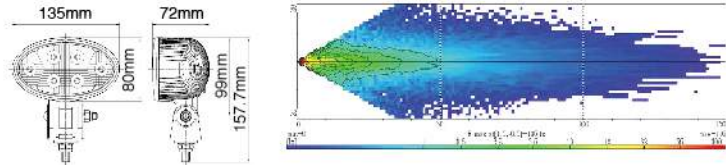




NS-2520 LED Flood Beam Work Lamp



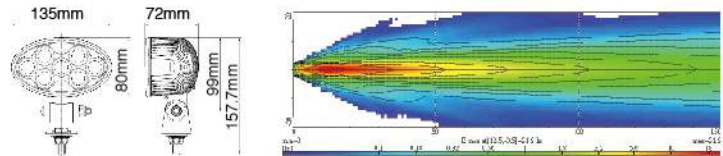
- EMI Class 3 according to CISPR25
- Ingress Protection IP68
- Aluminum housing as heatsink
- ABS reflector
- Polycarbonate lens
- Steel mounting bracket, zinc-yellow
- Light source: High power LED x 6 pcs
- Multivolt (9-33DC) suitable for 12V and 24V vehicle
- Options: Stainless steel bracket available upon request



NS-2521 LED Spot Beam Work Lamp



- EMI Class 3 according to CISPR25
- Ingress Protection IP68
- Aluminum housing as heatsink
- ABS reflector
- Polycarbonate lens
- Steel mounting bracket, zinc-yellow
- Light source: High power LED x 7 pcs
- Multivolt (9-33DC) suitable for 12V and 24V vehicle
- Options: Stainless steel bracket available upon request



NS-2522 LED Flood or Spot Beam Compact Work Lamp

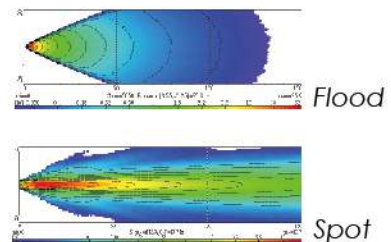
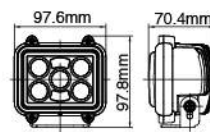


Flood



Spot

- EMI Class 3 according to CISPR25
- Ingress Protection IP67
- Aluminum housing as heatsink
- ABS reflector
- Crystal glass lens
- Steel mounting bracket, black
- Light source: High power LED x 5 pcs
- Multivolt (9-33DC) suitable for 12V and 24V vehicle





NS-2527 LED Hand Search Lamp



- EMI Class 3 according to CISPR25
- Ingress Protection IP56
- ABS housing and handle, black
- ABS reflector
- Polycarbonate lens
- With On/Off switch
- Light source: LED x 30 pcs

- NS-2527A –
With rechargeable lithium battery built-in 9-33V
Supplied with harness A (plug fit to vehicle cigarette lighter)
- Options: AC home rechargeable plug available upon request



Harness A

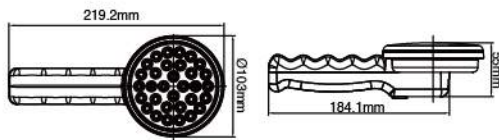


Harness B



Harness C

- NS-2527B –
Without battery 12V
Supplied with harness B (plug fit to vehicle cigarette lighter)
- Options: AC home rechargeable plug available upon request
24V available upon request



NS-2528 LED Spot Beam Work Lamp



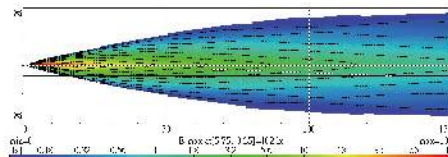
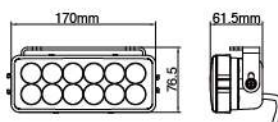
- EMI Class 3 according to CISPR25
- Ingress Protection IP68
- Aluminum housing as heatsink
- ABS reflector
- Polycarbonate lens
- Steel mounting bracket, black
- Light source: High power LED x 12 pcs
- Multivolt (9-33DC) suitable for 12V and 24V vehicle
- Features: Lamps can be connected vertically or horizontally
- Options: Ø53mm or Ø39mm Clips (for bull bar fitting) available upon request
- Options: Easy-fit plug with harness available upon request

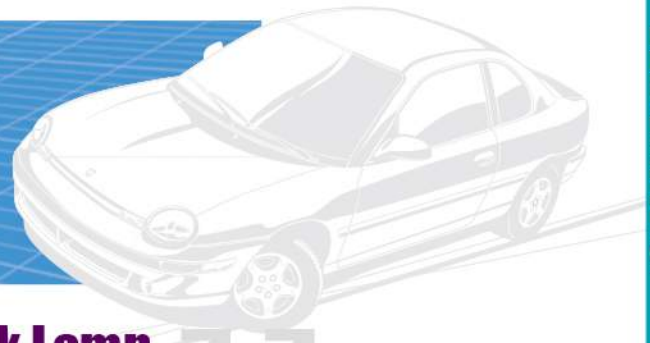


- 2 pieces assembled vertically -- 2 pieces assembled horizontally - - Easy-fit plug with harness -



- With clips for bull bar fitting -





NS-2539 LED Flood Beam Work Lamp



- EMI Class 3 according to CISPR25
- Ingress Protection IP68
- Aluminum housing as heatsink
- ABS reflector
- Polycarbonate lens
- Steel mounting bracket, black
- Light source: High power LED x 12 pcs
- Multivolt (9-33DC) suitable for 12V and 24V vehicle
- Features: Lamps can be connected vertically or horizontally
- Options: Ø53mm or Ø39mm Clips (for bull bar fitting) available upon request
- Options: Easy-fit plug with harness available upon request



- 2 pieces assembled vertically -



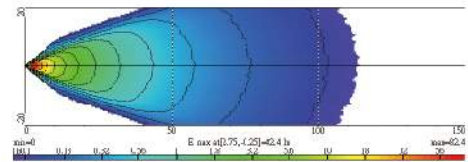
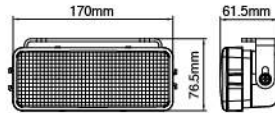
- 2 pieces assembled horizontally -



- Easy-fit plug with harness -



- With clips for bull bar fitting -



NS-2531 LED Spot Beam Work Lamp

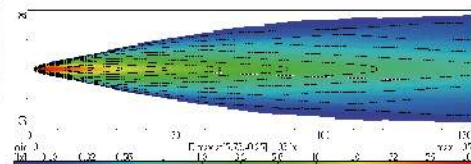
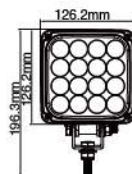


NS-2531A



NS-2531B

- EMI Class 3 according to CISPR25
- Ingress Protection IP68
- Aluminum housing as heatsink
- ABS reflector
- Polycarbonate lens
- Stainless steel mounting bracket
- Light source: High power LED x 16 pcs
- Multivolt (9-33DC) suitable for 12V and 24V vehicle



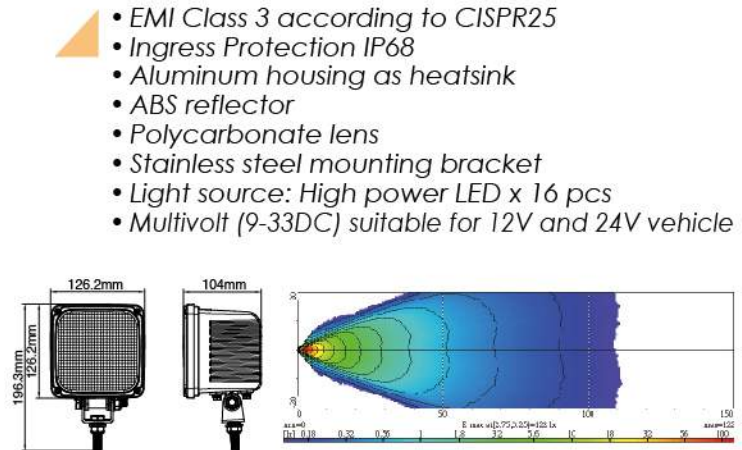


NS-2540 LED Flood Beam Work Lamp

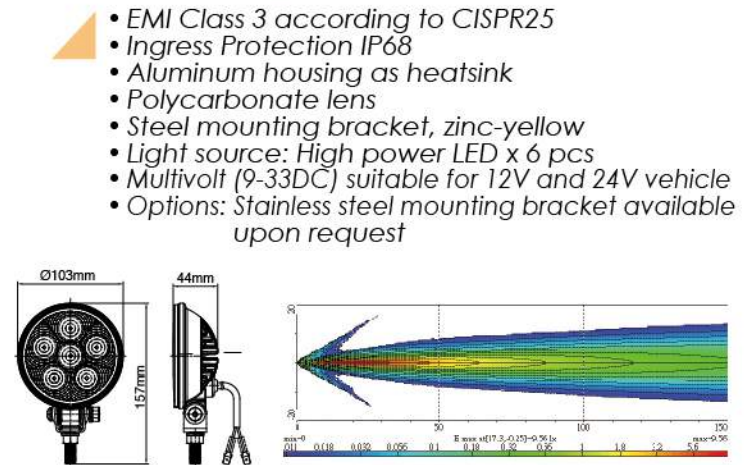


NS-2540A

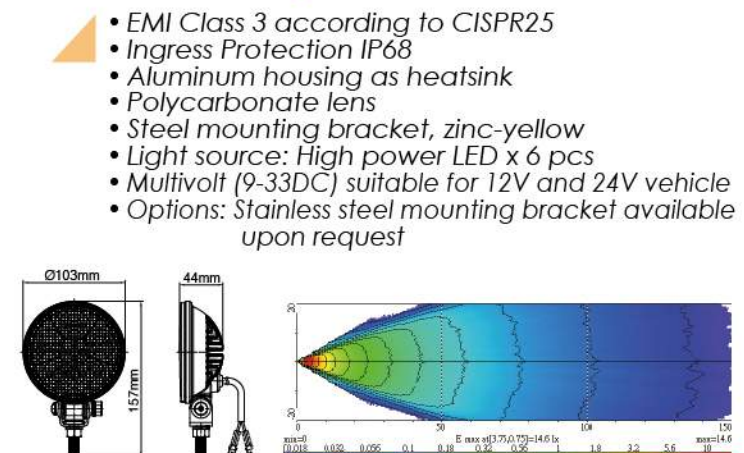
NS-2540B

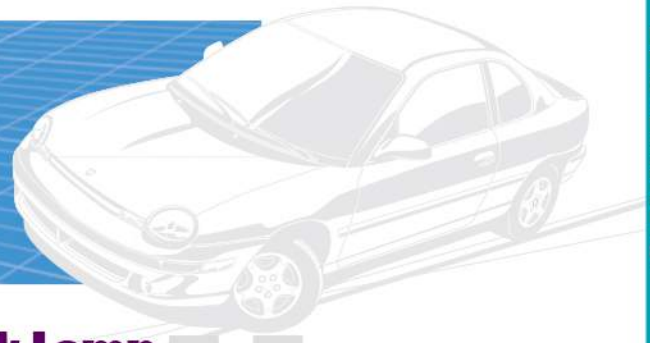


NS-2532 LED Spot Beam Work Lamp



NS-2533 LED Flood Beam Work Lamp

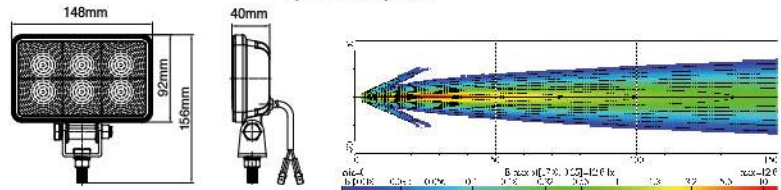




NS-2534 LED Spot Beam Work Lamp



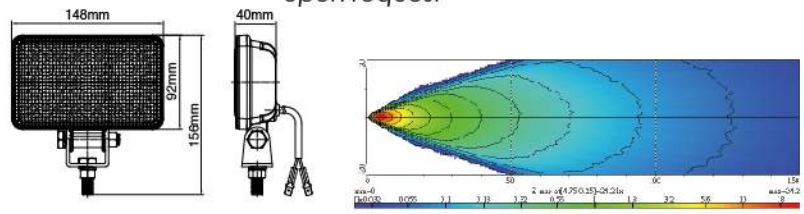
- EMI Class 3 according to CISPR25
- Ingress Protection IP68
- Aluminum housing as heatsink
- Polycarbonate lens
- Steel mounting bracket, zinc-plated
- Light source: High power LED x 6 pcs
- Multivolt (9-33DC) suitable for 12V and 24V vehicle
- Options: Stainless steel mounting bracket available upon request



NS-2535 LED Flood Beam Work Lamp



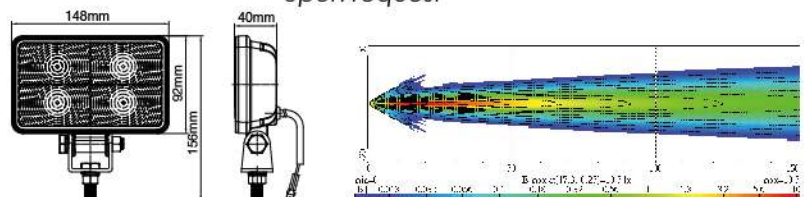
- EMI Class 3 according to CISPR25
- Ingress Protection IP68
- Aluminum housing as heatsink
- Polycarbonate lens
- Steel mounting bracket, zinc-plated
- Light source: High power LED x 6 pcs
- Multivolt (9-33DC) suitable for 12V and 24V vehicle
- Options: Stainless steel mounting bracket available upon request



NS-2536 LED Spot Beam Work Lamp



- EMI Class 3 according to CISPR25
- Ingress Protection IP68
- Aluminum housing as heatsink
- Polycarbonate lens
- Steel mounting bracket, zinc-plated
- Light source: High power LED x 4 pcs
- Multivolt (9-33DC) suitable for 12V and 24V vehicle
- Options: Stainless steel mounting bracket available upon request

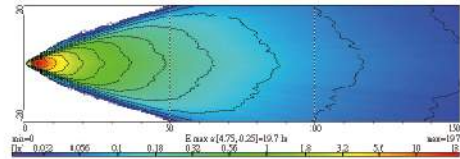
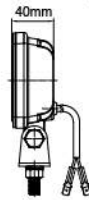
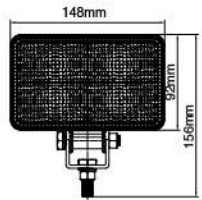




NS-2537 LED Flood Beam Work Lamp



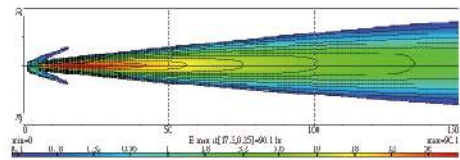
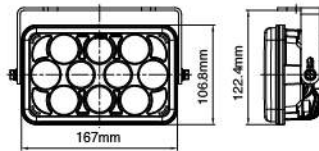
- EMI Class 3 according to CISPR25
- Ingress Protection IP68
- Aluminum housing as heatsink
- Polycarbonate lens
- Steel mounting bracket, zinc-plated
- Light source: High power LED x 4 pcs
- Multivolt (9-33DC) suitable for 12V and 24V vehicle
- Options: Stainless steel mounting bracket available upon request



NS-2538 LED Spot Beam Work Lamp



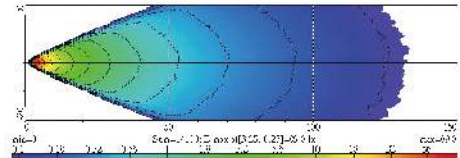
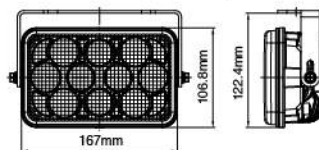
- EMI Class 3 according to CISPR25
- Ingress Protection IP68
- Aluminum housing as heatsink
- ABS reflector
- Crystal glass lens
- Steel mounting bracket, black
- Light source: High power LED x 10 pcs
- Multivolt (9-33DC) suitable for 12V and 24V vehicle
- Options: PC or PE Cover available upon request

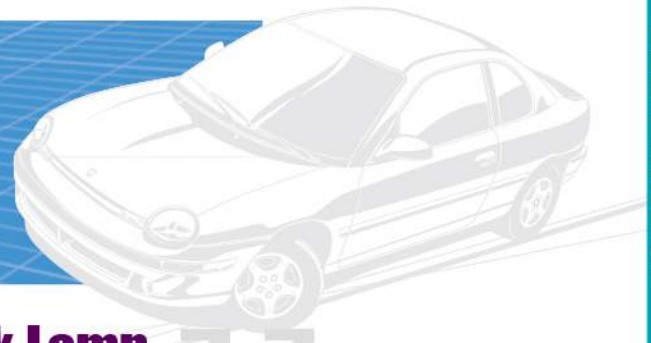


NS-2548 LED Flood Beam Work Lamp



- EMI Class 3 according to CISPR25
- Ingress Protection IP68
- Aluminum housing as heatsink
- ABS reflector
- Crystal glass lens
- Steel mounting bracket, black
- Light source: High power LED x 10 pcs
- Multivolt (9-33DC) suitable for 12V and 24V vehicle
- Options: PC or PE Cover available upon request

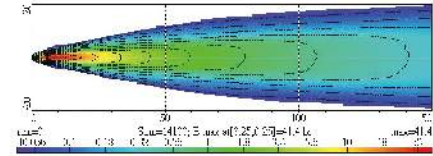
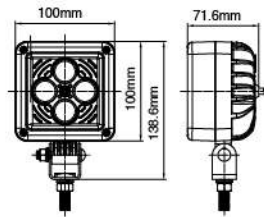




NS-2546 LED Spot Beam Work Lamp



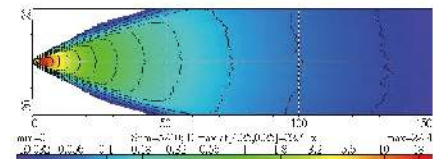
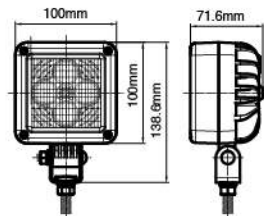
- EMI Class 3 according to CISPR25
- Ingress Protection IP69K
- Aluminum housing as heatsink
- Crystal glass lens
- Steel mounting bracket, zinc-yellow
- Light source: High power LED x 4 pcs
- Multivolt (9-33DC) suitable for 12V and 24V vehicle



NS-2547 LED Flood Beam Work Lamp



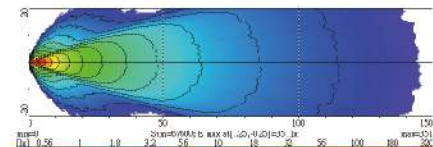
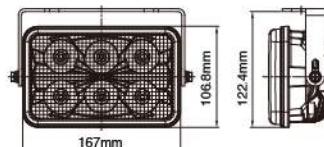
- EMI Class 3 according to CISPR25
- Ingress Protection IP69K
- Aluminum housing as heatsink
- Crystal glass lens
- Steel mounting bracket, zinc-yellow
- Light source: High power LED x 4 pcs
- Multivolt (9-33DC) suitable for 12V and 24V vehicle



NS-2550 LED Flood Beam Work Lamp



- EMI Class 5 according to CISPR25
- Ingress Protection IP69K
- Aluminum housing as heatsink
- Polycarbonate reflector
- Crystal glass lens
- Steel mounting bracket, black
- Light source: High power LED x 6 pcs
- Multivolt (9-33DC) suitable for 12V and 24V vehicle
- Options: PC or PE Cover available upon request

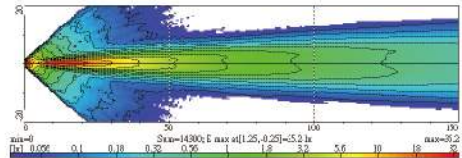
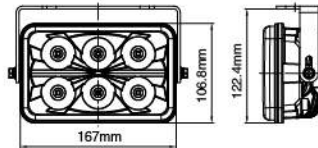




NS-2553 LED Spot Beam Work Lamp



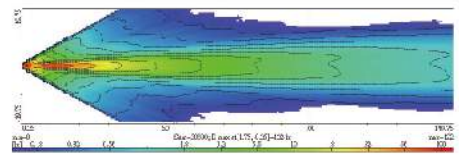
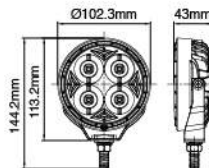
- EMI Class 5 according to CISPR25
- Ingress Protection IP69K
- Aluminum housing as heatsink
- Polycarbonate reflector
- Crystal glass lens
- Steel mounting bracket, black
- Light source: High power LED x 6 pcs
- Multivolt (9-33DC) suitable for 12V and 24V vehicle



NS-2555 LED Spot Beam Work Lamp



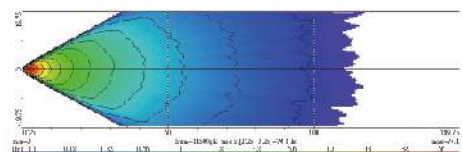
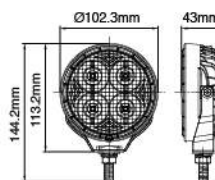
- EMI Class 5 according to CISPR25
- Ingress Protection IP68
- Aluminum housing as heatsink
- Polycarbonate reflector
- Polycarbonate lens
- Steel mounting bracket, black
- Light source: High power LED x 4 pcs
- Multivolt (9-33DC) suitable for 12V and 24V vehicle
- Options: PC or PE Cover available upon request

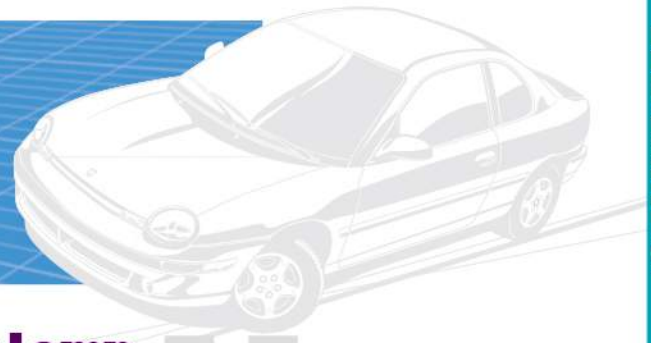


NS-2556 LED Flood Beam Work Lamp



- EMI Class 5 according to CISPR25
- Ingress Protection IP68
- Aluminum housing as heatsink
- Polycarbonate reflector
- Polycarbonate lens
- Steel mounting bracket, black
- Light source: High power LED x 4 pcs
- Multivolt (9-33DC) suitable for 12V and 24V vehicle

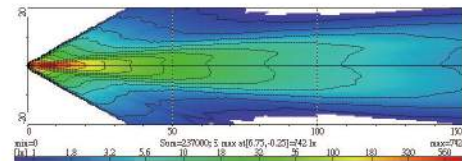
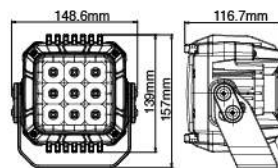




NS-2551 LED Spot Beam Work Lamp



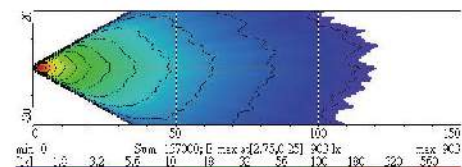
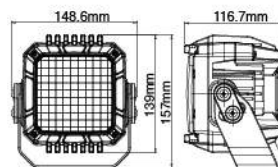
- EMI Class 5 according to CISPR25
- Ingress Protection IP69K
- Aluminum housing as heatsink
- Polycarbonate reflector
- Polycarbonate lens
- Stainless steel mounting bracket
- Light source: High power LED x 9 pcs
- Multivolt (9-33DC) suitable for 12V and 24V vehicle



NS-2559 LED Flood Beam Work Lamp



- EMI Class 5 according to CISPR25
- Ingress Protection IP69K
- Aluminum housing as heatsink
- Polycarbonate reflector
- Polycarbonate lens
- Stainless steel mounting bracket
- Light source: High power LED x 9 pcs
- Multivolt (9-33DC) suitable for 12V and 24V vehicle





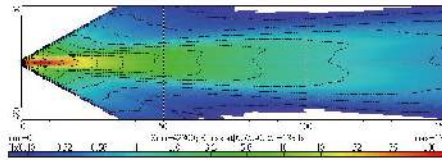
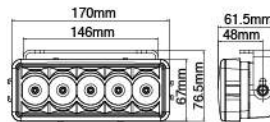
NS-2560 LED Spot Beam Work Lamp



- EMI Class 5 according to CISPR25
- Ingress Protection IP67
- Aluminum housing as heatsink
- Polycarbonate reflector
- Polycarbonate lens
- Steel mounting bracket, black
- Light source: High power LED x 5 pcs
- Multivolt (9-33DC) suitable for 12V and 24V vehicle
- Features: Lamps can be connected vertically or horizontally
- Options: Ø53mm or Ø39mm Clips (for bull bar fitting) available upon request
- Options: Easy-fit plug with harness available upon request



- 2 pieces assembled vertically -- 2 pieces assembled horizontally - - Easy-fit plug with harness -



- With clips for bull bar fitting -

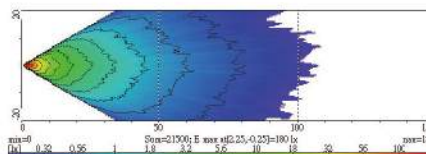
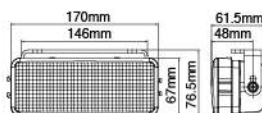
NS-2561 LED Flood Beam Work Lamp



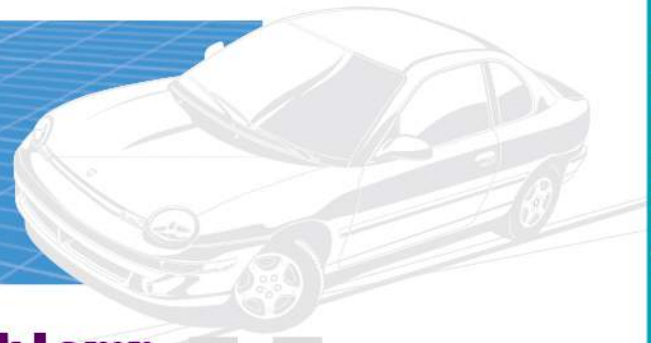
- EMI Class 5 according to CISPR25
- Ingress Protection IP67
- Aluminum housing as heatsink
- Polycarbonate reflector
- Polycarbonate lens
- Steel mounting bracket, black
- Light source: High power LED x 5 pcs
- Multivolt (9-33DC) suitable for 12V and 24V vehicle
- Features: Lamps can be connected vertically or horizontally
- Options: Ø53mm or Ø39mm Clips (for bull bar fitting) available upon request
- Options: Easy-fit plug with harness available upon request



- 2 pieces assembled vertically -- 2 pieces assembled horizontally - - Easy-fit plug with harness -



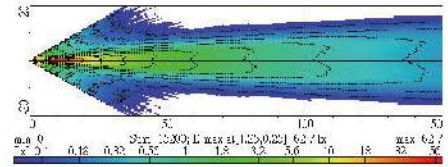
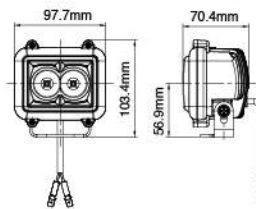
- With clips for bull bar fitting -



NS-2568 LED Spot Beam Work Lamp



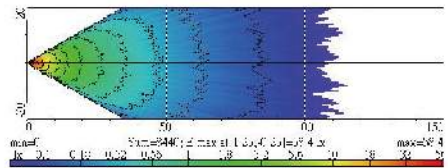
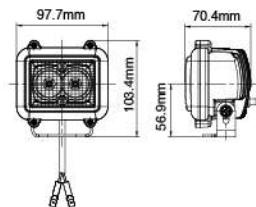
- EMI Class 5 according to CISPR25
- Ingress Protection IP68
- Aluminum housing as heatsink
- ABS front frame
- Polycarbonate reflector
- Crystal glass lens
- Steel mounting bracket, black
- Light source: High power LED x 2 pcs
- Multivolt (9-33DC) suitable for 12V and 24V vehicle



NS-2569 LED Flood Beam Work Lamp



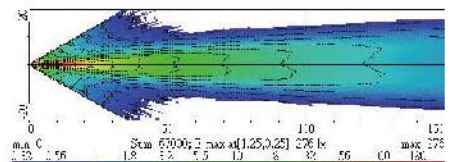
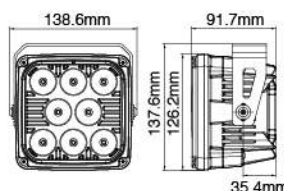
- EMI Class 5 according to CISPR25
- Ingress Protection IP68
- Aluminum housing as heatsink
- ABS front frame
- Polycarbonate reflector
- Crystal glass lens
- Steel mounting bracket, black
- Light source: High power LED x 2 pcs
- Multivolt (9-33DC) suitable for 12V and 24V vehicle

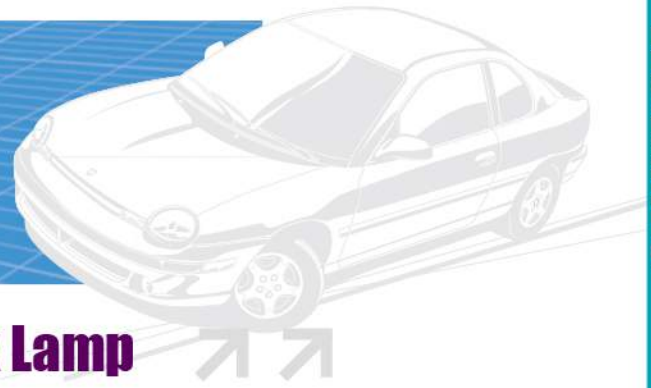


NS-2570 LED Spot Beam Work Lamp



- EMI Class 3 according to CISPR25
- Ingress Protection IP68
- Aluminum housing as heatsink
- ABS front frame
- Polycarbonate reflector
- Polycarbonate lens
- Stainless steel mounting bracket
- Light source: High power LED x 8 pcs
- Multivolt (9-33DC) suitable for 12V and 24V vehicle

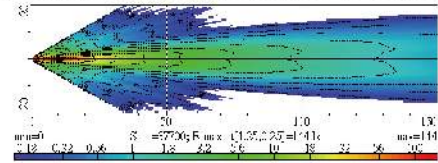
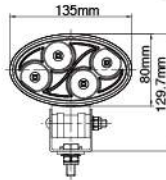




NS-2574 LED Spot Beam Work Lamp



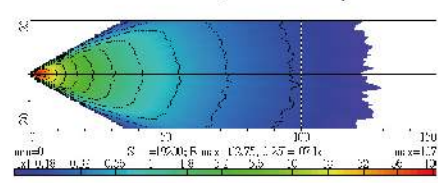
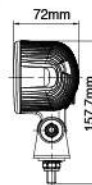
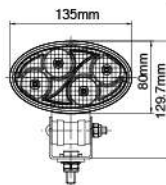
- EMI Class 5 according to CISPR25
- Ingress Protection IP69K
- Aluminum housing as heatsink
- Polycarbonate reflector
- Polycarbonate lens
- Steel mounting bracket
- Light source: High power LED x 4 pcs
- Multivolt (9-33DC) suitable for 12V and 24V vehicle
- Options: Stainless steel bracket available upon request
- Options: Blue or red LED available, multivolt (12-80DC)



NS-2575 LED Flood Beam Work Lamp



- EMI Class 5 according to CISPR25
- Ingress Protection IP69K
- Aluminum housing as heatsink
- Polycarbonate reflector
- Polycarbonate lens
- Steel mounting bracket
- Light source: High power LED x 4 pcs
- Multivolt (9-33DC) suitable for 12V and 24V vehicle
- Options: Stainless steel bracket available upon request
- Options: Blue or red LED available, multivolt (12-80DC)

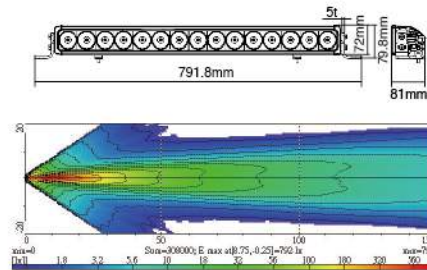




NS-2582 LED Spot Beam Work Lamp



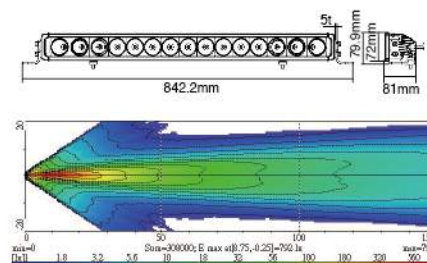
- EMI Class 3 according to CISPR25
- Ingress protection IP69K
- Aluminum housing as heatsink
- Polycarbonate reflector
- Polycarbonate lens
- Steel mounting bracket
- Light source: High power 5W LED x 15pcs
- Multivolt (11-32DC) suitable for 12V and 24V vehicle
- Plug and play harness is available
- Options: High power 10W LED available upon request
- Options: 6pcs, 12pcs, 18pcs & 24pcs LEDs available upon request



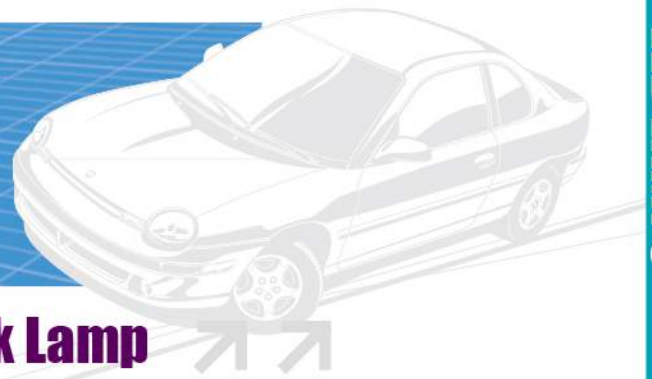
NS-2583 LED Flood Beam Work Lamp



- EMI Class 3 according to CISPR25
- Ingress protection IP69K
- Aluminum housing as heatsink
- Polycarbonate reflector
- Polycarbonate lens
- Steel mounting bracket
- Light source: High power 5W LED x 15pcs
- Multivolt (11-32DC) suitable for 12V and 24V vehicle
- Plug and play harness is available
- Options: High power 10W LED available upon request
- Options: 6pcs, 12pcs, 18pcs & 24pcs LEDs available upon request



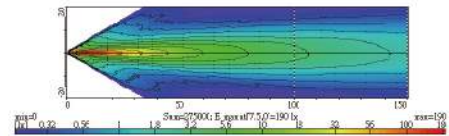
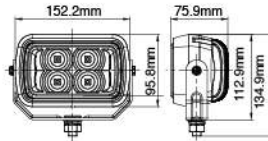




NS-2588 LED Spot Beam Work Lamp



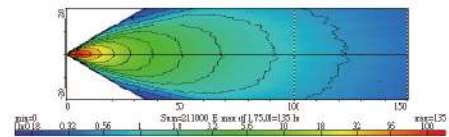
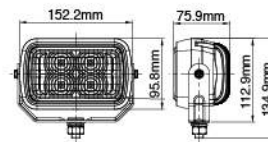
- EMI Class 3 according to CISPR25
- Ingress Protection IP68
- Aluminum housing as heatsink
- Plastic front frame
- Polycarbonate reflector
- Polycarbonate lens
- Steel mounting bracket, black
- Light source: High power LED x 4 pcs
- Multivolt (9-33DC) suitable for 12V and 24V vehicle



NS-2589 LED Flood Beam Work Lamp



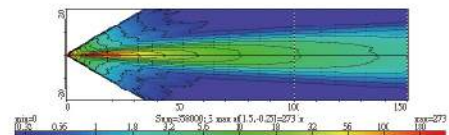
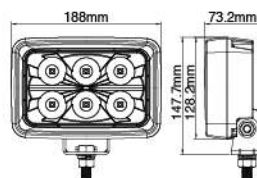
- EMI Class 3 according to CISPR25
- Ingress Protection IP68
- Aluminum housing as heatsink
- Plastic front frame
- Polycarbonate reflector
- Polycarbonate lens
- Steel mounting bracket, black
- Light source: High power LED x 4 pcs
- Multivolt (9-33DC) suitable for 12V and 24V vehicle



NS-2590 LED Spot Beam Work Lamp



- EMI Class 3 according to CISPR25
- Ingress Protection IP68
- Aluminum housing as heatsink
- Plastic front frame
- Polycarbonate reflector
- Polycarbonate lens
- Stainless steel mounting bracket
- Light source: High power LED x 6 pcs
- Multivolt (9-33DC) suitable for 12V and 24V vehicle

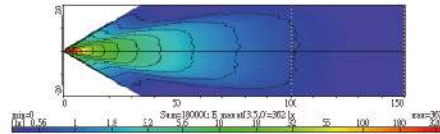
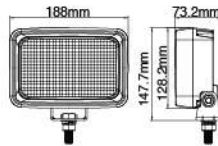




NS-2591 LED Flood Beam Work Lamp



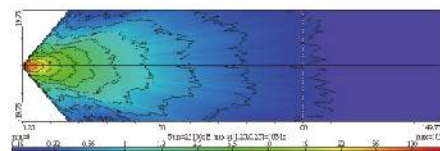
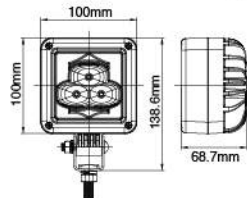
- EMI Class 3 according to CISPR25
- Ingress Protection IP68
- Aluminum housing as heatsink
- Plastic front frame
- Polycarbonate reflector
- Polycarbonate lens
- Stainless steel mounting bracket
- Light source: High power LED x 6 pcs
- Multivolt (9-33DC) suitable for 12V and 24V vehicle



NS-2594 LED Spot Beam Work Lamp



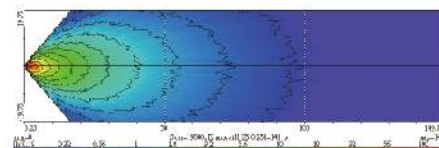
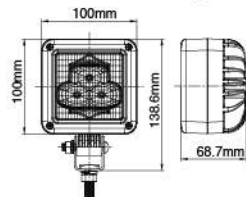
- EMI Class 3 according to CISPR25
- Ingress Protection IP68
- Aluminum housing as heatsink
- Plastic front frame
- Polycarbonate reflector
- Crystal glass lens
- Steel mounting bracket, zinc-yellow
- Light source: High power LED x 3 pcs
- Multivolt (9-33DC) suitable for 12V and 24V vehicle

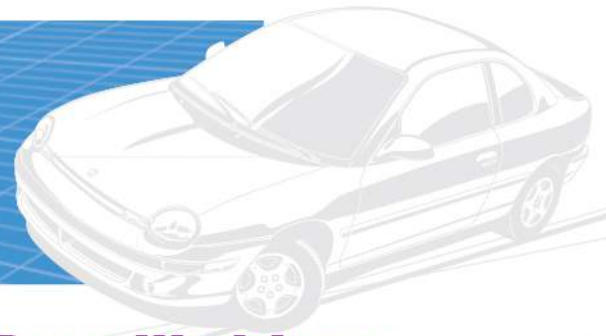


NS-2595 LED Flood Beam Work Lamp



- EMI Class 3 according to CISPR25
- Ingress Protection IP68
- Aluminum housing as heatsink
- Plastic front frame
- Polycarbonate reflector
- Crystal glass lens
- Steel mounting bracket, zinc-yellow
- Light source: High power LED x 3 pcs
- Multivolt (9-33DC) suitable for 12V and 24V vehicle

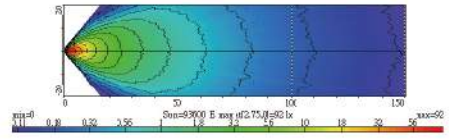
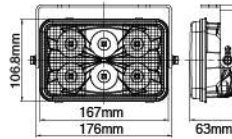




NS-2596 LED Spot and Flood Beam Work Lamp



- EMI Class 3 according to CISPR25
- Ingress Protection IP69K
- Aluminum housing as heatsink
- Polycarbonate reflector
- Polycarbonate lens
- Steel mounting bracket, black
- Light source: High power LED x 6 pcs
- Multivolt (9-33DC) suitable for 12V and 24V vehicle



NS-2598 LED Work Lamp



- EMI Class 3 according to CISPR25
- Ingress Protection IP69K
- Aluminum housing as heatsink
- Polycarbonate lens
- Light source: High power LED x 4 pcs
- Multivolt (9-33DC) suitable for 12V and 24V vehicle

