

HEADLAMPS

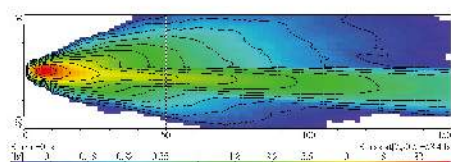




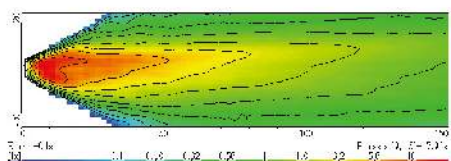
NS-2209S 7" Headlamp With PC Lens

SAE Homologation

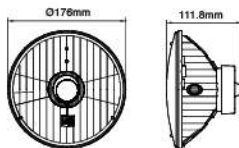
- Fits H6017 / H6024 applications
- Die-cast aluminum multi-surface reflector
- Polycarbonate lens
- Housing finish: Electro deposited, black
- Halogen bulb: HB2 12V 60/55W
- Includes protective rubber cover



Low beam



High beam

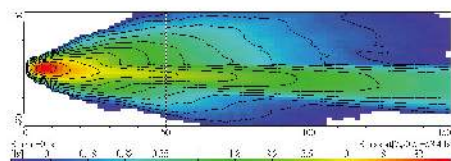


10

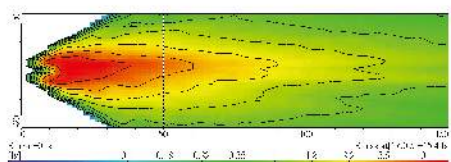
NS-2210S 7" Headlamp With Glass Lens

SAE Homologation

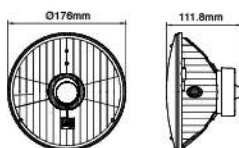
- Fits H6017 / H6024 applications
- Die-cast aluminum multi-surface reflector
- Crystal glass lens
- Housing finish: Electro deposited, black
- Halogen bulb: HB2 12V 60/55W
- Includes protective rubber cover

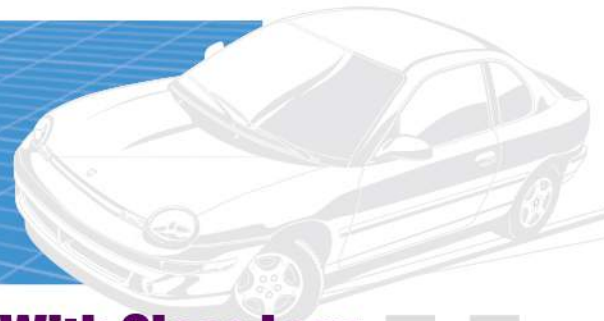


Low beam



High beam

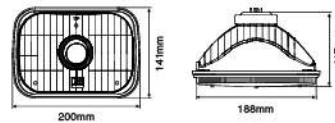
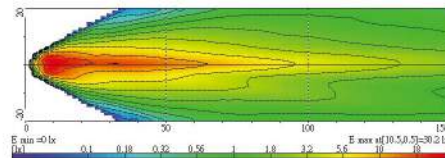
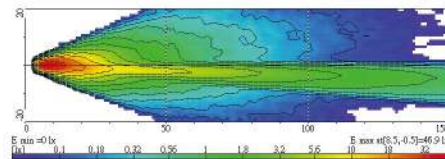




NS-2212S 200mm Headlamp With Glass Lens

SAE Homologation

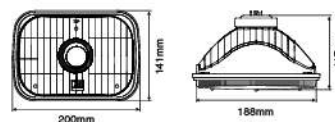
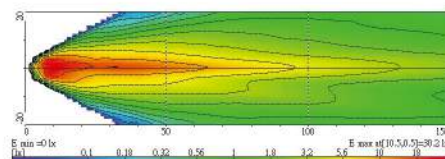
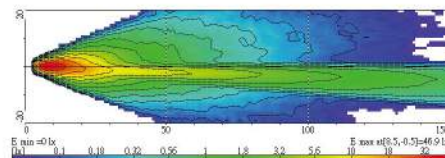
- Fits H6054 applications
- Die-cast aluminum multi-surface reflector
- Crystal glass lens
- Housing finish: Electro deposited, black
- Halogen bulb: HB2 12V 60/55W
- Includes protective rubber cover



NS-2213S 200mm Headlamp With PC Lens

SAE Homologation

- Fits H6054 applications
- Die-cast aluminum multi-surface reflector
- Polycarbonate lens
- Housing finish: Electro deposited, black
- Halogen bulb: HB2 12V 60/55W
- Includes protective rubber cover



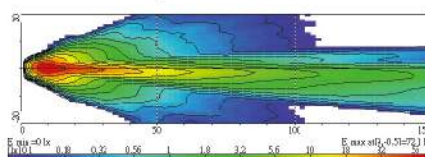


NS-2214S 5-3/4" Headlamp With Glass Lens ↗ ↗

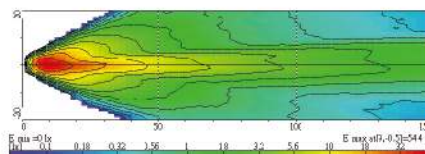
SAE Homologation



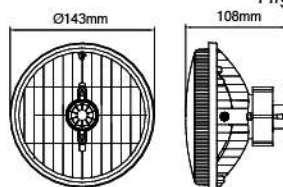
- Fits H5006 applications
- Die-cast aluminum multi-surface reflector
- Crystal glass lens
- Housing finish: Electro deposited, black
- Halogen bulb: 9007/HB5 12V 65/55W
- Includes protective rubber cover



Low beam



High beam

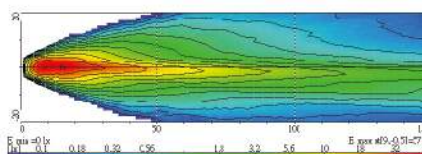


NS-2211S 165mm Headlamp With Glass Lens ↗ ↗

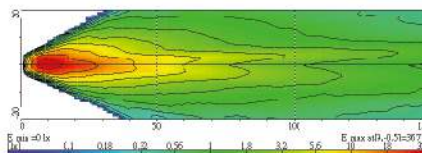
SAE Homologation



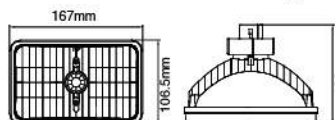
- Fits H4656 applications
- Die-cast aluminum multi-surface reflector
- Crystal glass lens
- Housing finish: Electro deposited, black
- Halogen bulb: 9007/HB5 12V 65/55W
- Includes protective rubber cover

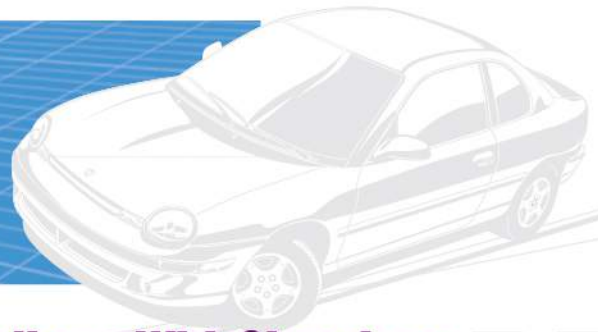


Low beam



High beam



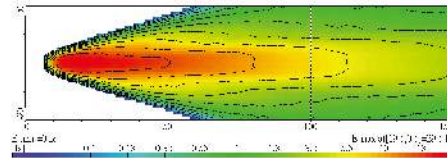


NS-2203H 165mm High Beam Headlamp With Glass Lens

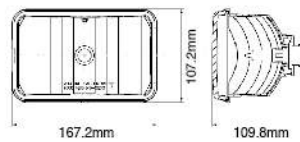
SAE Homologation



- Fits H4651 applications
- Die-cast aluminum multi-surface reflector
- Crystal glass lens
- Housing finish: Electro deposited, black
- Halogen bulb: 9005/HB3 12V 60W
- Includes protective rubber cover



High beam

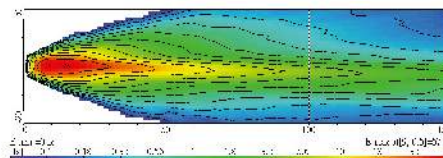


NS-2203L 165mm Low Beam Headlamp With Glass Lens

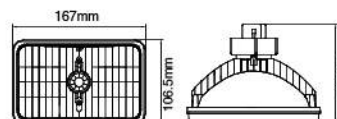
SAE Homologation



- Fits H4651 applications
- Die-cast aluminum multi-surface reflector
- Crystal glass lens
- Housing finish: Electro deposited, black
- Halogen bulb: 9007/HB5 12V 65/55W
- Includes protective rubber cover



Low beam

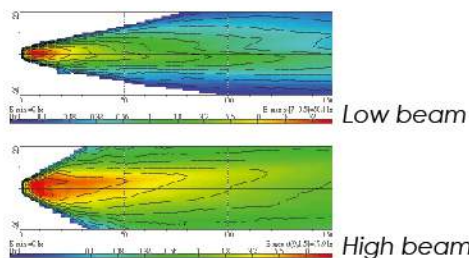
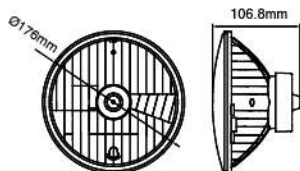




NS-2209E 7" Headlamp With Position Lamp

ECE Homologation

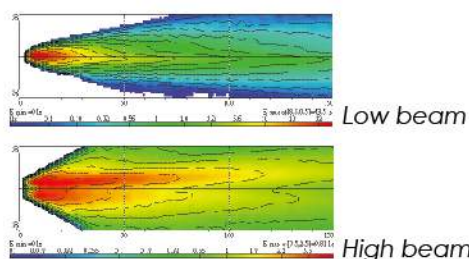
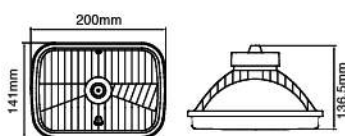
- Die-cast aluminum multi-surface reflector
- Polycarbonate lens
- Housing finish: Electro deposited, black
- Halogen bulb: H4 12V 60/55W; 12V 5W
- Includes protective rubber cover
- For left hand driving / right hand traffic



NS-2213E 200mm Headlamp With Position Lamp

ECE Homologation

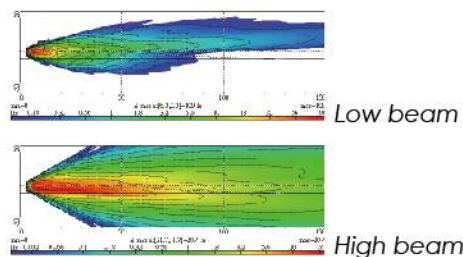
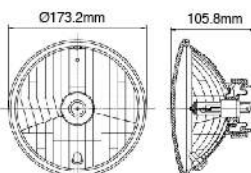
- Die-cast aluminum multi-surface reflector
- Polycarbonate lens
- Housing finish: Electro deposited, black
- Halogen bulb: H4 12V 60/55W; 12V 5W
- Includes protective rubber cover
- For left hand driving / right hand traffic

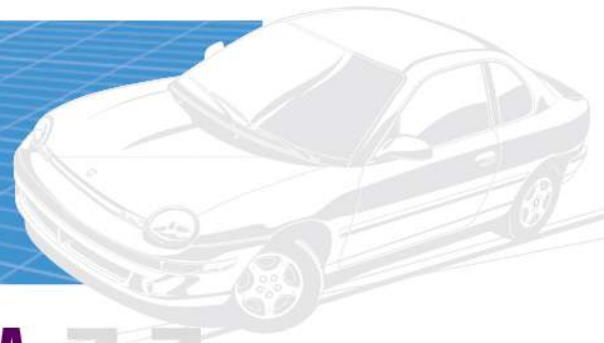


NS-2232E 7" Headlamp With Position Lamp

ECE Homologation

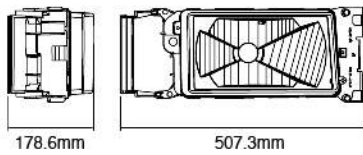
- Die-cast aluminum multi-surface reflector
- Polycarbonate lens
- Housing finish: Electro deposited, black
- Halogen bulb: H4 12V 60/55W; 12V 5W
- Includes protective rubber cover
- For right hand driving / left hand traffic



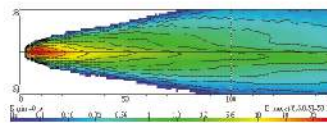


NS-2215 Headlamp for SCANIA

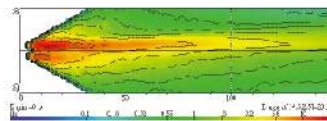
ECE Homologation



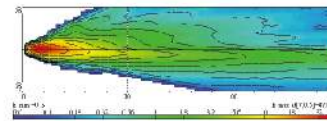
- Die-cast aluminum multi-surface reflector
- Polycarbonate lens
- Halogen bulb: H4 24V 75/70W
- For left hand driving / right hand traffic



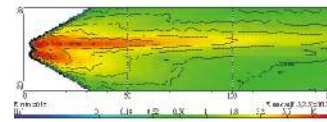
Low beam-R/H



High beam-R/H



Low beam-L/H



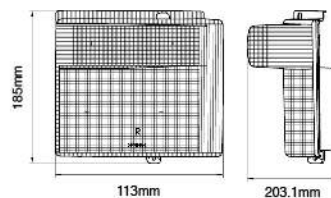
High beam-L/H

NS-2216 Indicator for SCANIA

ECE Homologation



- Fits for 4" and R series
- PC + ABS reflector
- PMMA lens
- Supplied without loom and bulb
- Options: Loom and bulbs available upon request





NS-2208 Headlamp and Indicator Assembly for SCANIA ↗ ↗

ECE Homologation

- Fits for 4" and R series
- Replacement headlamp: NS-2215
- Replacement indicator: NS-2216



R/H

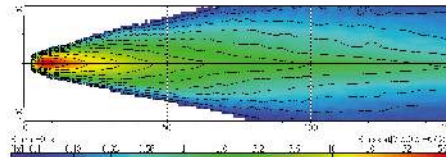


L/H

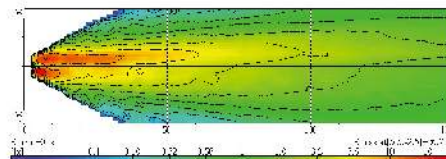
NS-2217 Headlamp for VOLVO ↗ ↗

ECE Homologation

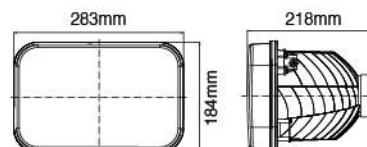
- Fits for FM7, FM10, FM12, FM16 before 2003
- Polycarbonate multi-surface reflector
- Polycarbonate lens
- Halogen bulb: H4 24V 75/70W
- Includes protective rubber cover
- For left hand driving / right hand traffic



Low beam



High beam



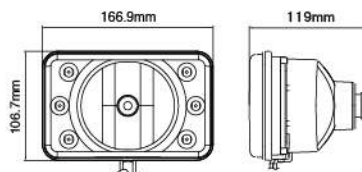
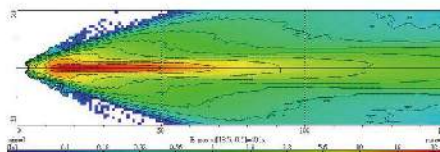


NS-2227H 165mm High Beam Headlamp With LED Position Lamp

SAE Homologation



- Die-cast aluminum multi-surface reflector
- Crystal glass lens
- Housing finish: Electro deposited, black
- Halogen bulb: 9005X/S 12V 60W
- LED: White

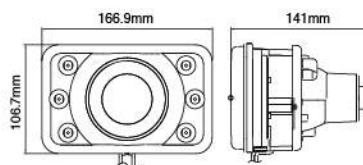
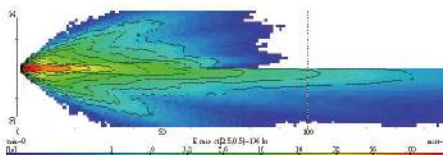


NS-2227L 165mm Low Beam Headlamp With LED Position Lamp

SAE Homologation



- Die-cast aluminum multi-surface reflector
- Crystal glass lens
- Built-in projector low beam
- Housing finish: Electro deposited, black
- Halogen bulb: 9005X/S 12V 60W
- LED: White



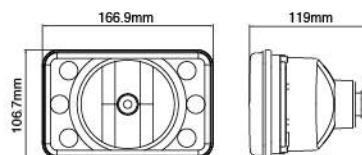
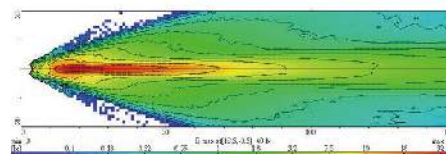


NS-2228H 165mm High Beam Headlamp ↗ ↗

SAE Homologation



- Die-cast aluminum multi-surface reflector
- Crystal glass lens
- Housing finish: Electro deposited, black
- Halogen bulb: 9005X/S 12V 60W



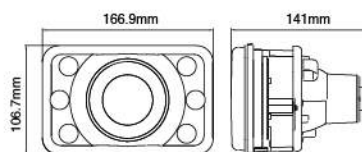
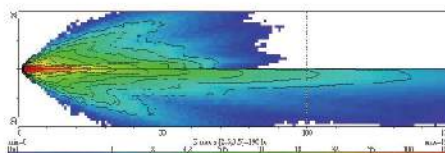
18

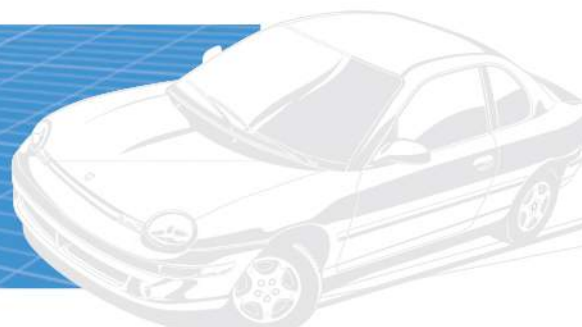
NS-2228L 165mm Low Beam Headlamp ↗ ↗

SAE Homologation



- Die-cast aluminum multi-surface reflector
- Crystal glass lens
- Built-in projector low beam
- Housing finish: Electro deposited, black
- Halogen bulb: 9005X/S 12V 60W



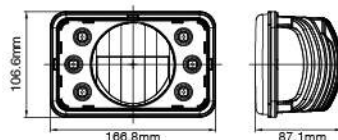
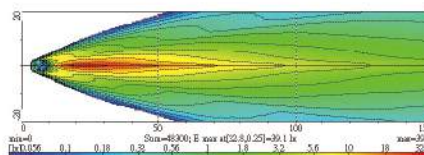


NS-2240H 165mm LED High Beam Headlamp With LED Position Lamp

SAE Homologation



- EMI Class 3 according to CISPR25
- Ingress Protection IP67
- Aluminum heatsink and ABS reflector
- Crystal glass lens
- Built-in driver
- Light source:
 - High beam - High power 4-chip LED x 1 pc
 - Position - LED x 6 pcs, White or Yellow
- Multivolt (9-33DC) suitable for 12V and 24V vehicle
- Options: Black finish reflector available upon request

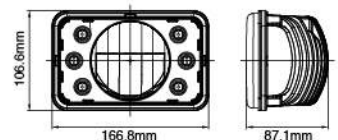
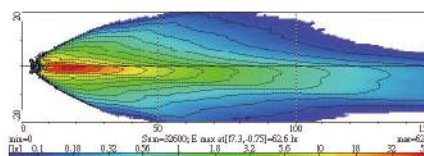


NS-2240L 165mm LED Low Beam Headlamp With LED Position Lamp

SAE Homologation



- EMI Class 3 according to CISPR25
- Ingress Protection IP67
- Aluminum heatsink and ABS reflector
- Crystal glass lens
- Built-in driver
- Light source:
 - Low beam - High power 4-chip LED x 1 pc
 - Position - LED x 6 pcs, White or Yellow
- Multivolt (9-33DC) suitable for 12V and 24V vehicle
- Options: Black finish reflector available upon request





NS-2241 7" LED High / Low Beam Headlamp With Position Lamp

**ECE Homologation
Design Patent**

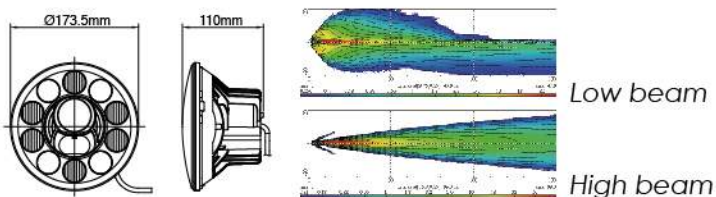
Design Patent
Taiwan: 100300161
EU: 001259568
USA: 29/385312

- EMI Class 5 according to CISPR25
- Ingress Protection IP68
- Aluminum heatsink and plastic reflector
- Polycarbonate lens
- Built-in driver
- Light source:
 - High beam - High power LED x 10 pcs
 - Low beam - High power 2-chip LED x 1 pc & 4-chip LED x 1 pc
- Multivolt (9-33DC) suitable for 12V and 24V vehicle
- For left hand driving / right hand traffic



NS-2241A

NS-2241B



NS-2242 7" LED High / Low Beam Headlamp With Position Lamp

**ECE Homologation
Design Patent**

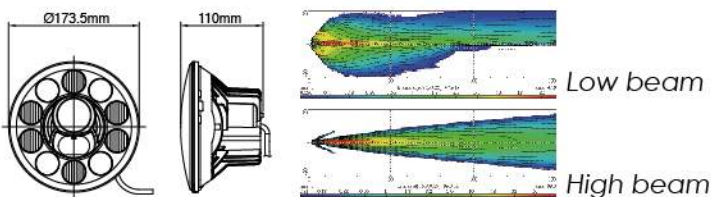
Design Patent
Taiwan: 100300161
EU: 001259568
USA: 29/385312

- EMI Class 5 according to CISPR25
- Ingress Protection IP68
- Aluminum heatsink and plastic reflector
- Polycarbonate lens
- Built-in driver
- Light source:
 - High beam - High power LED x 10 pcs
 - Low beam - High power 2-chip LED x 1 pc & 4-chip LED x 1 pc
- Multivolt (9-33DC) suitable for 12V and 24V vehicle
- For right hand driving / left hand traffic



NS-2242A

NS-2242B



NS-2243 7" LED High / Low Beam Headlamp

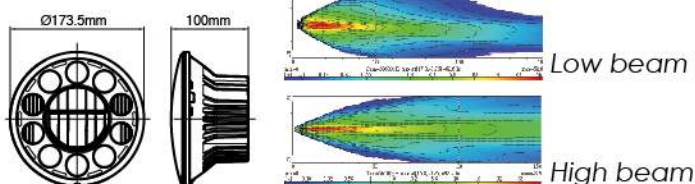
**SAE/DOT Homologation
Design Patent**

- EMI Class 3 according to CISPR25
- Ingress Protection IP68
- Aluminum heatsink and plastic reflector
- Polycarbonate lens
- Built-in driver
- Light source:
 - High beam - High power LED x 10 pcs
 - Low beam - High power 4-chip LED x 1 pc
- Multivolt (9-33DC) suitable for 12V and 24V vehicle



NS-2243A

NS-2243B



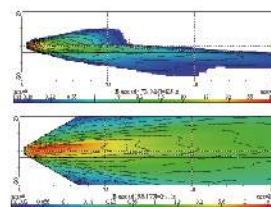
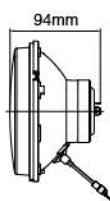


NS-2244 5-3/4" Headlamp With Position Lamp ↗ ↘

ECE Homologation



- ▲ Die-cast aluminum multi-surface reflector
- Crystal glass lens
- Housing finish: Electro deposited, black
- Halogen bulb: H4 12V 60/55W; 12V 5W
- Options: H4 24V 75/70W; 24V 5W available upon request
- For left hand driving / right hand traffic



Low beam

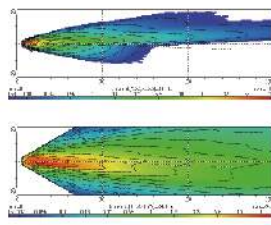
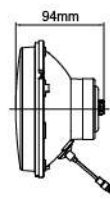
High beam

NS-2245 5-3/4" Headlamp With Position Lamp ↗ ↘

ECE Homologation



- ▲ Die-cast aluminum multi-surface reflector
- Crystal glass lens
- Housing finish: Electro deposited, black
- Halogen bulb: H4 12V 60/55W; 12V 5W
- Options: H4 24V 75/70W; 24V 5W available upon request
- For right hand driving / left hand traffic



Low beam

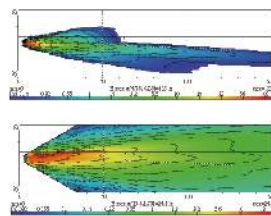
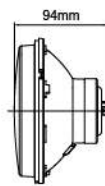
High beam

NS-2246 5-3/4" Headlamp ↗ ↘

ECE Homologation



- ▲ Die-cast aluminum multi-surface reflector
- Crystal glass lens
- Housing finish: Electro deposited, black
- Halogen bulb: H4 12V 60/55W
- Options: H4 24V 75/70W available upon request
- For left hand driving / right hand traffic



Low beam

High beam

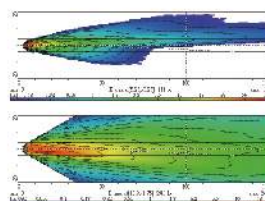
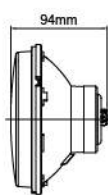


NS-2247 5-3/4" Headlamp

ECE Homologation



- Die-cast aluminum multi-surface reflector
- Crystal glass lens
- Housing finish: Electro deposited, black
- Halogen bulb: H4 12V 60/55W
- Options: H4 24V 75/70W available upon request
- For right hand driving / left hand traffic



Low beam

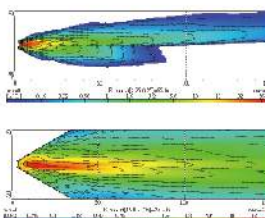
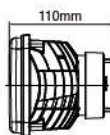
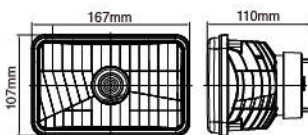
High beam

NS-2250 165mm Headlamp

ECE Homologation



- Die-cast aluminum multi-surface reflector
- Crystal glass lens
- Housing finish: Electro deposited, black
- Halogen bulb: H4 12V 60/55W
- Options: H4 24V 75/70W available upon request
- For right hand driving / left hand traffic



Low beam

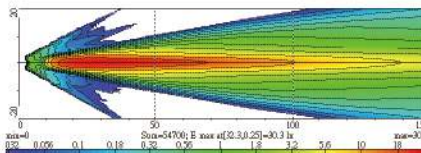
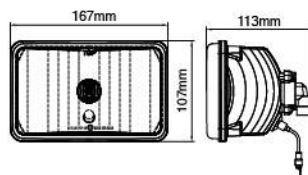
High beam

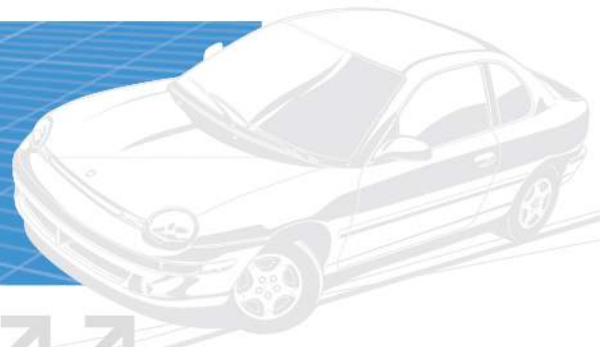
NS-2259 165mm High Beam Headlamp With Position Lamp

ECE Homologation



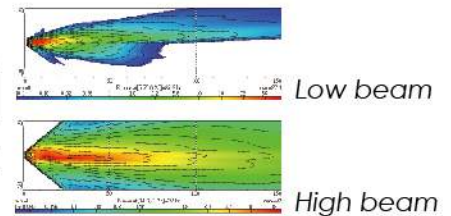
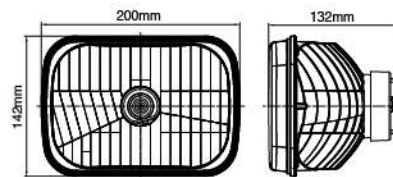
- Die-cast aluminum multi-surface reflector
- Crystal glass lens
- Housing finish: Electro deposited, black
- Halogen bulb: H1 12V 55W; 12V 5W
- Options: H1 24V 70W; 24V 5W available upon request





NS-2251 200mm Headlamp

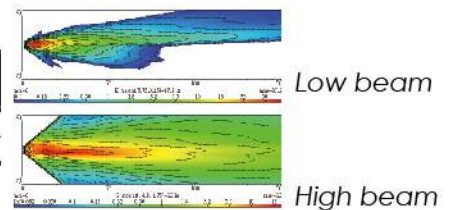
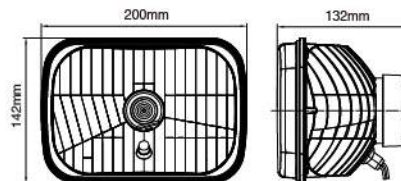
ECE Homologation



- Die-cast aluminum multi-surface reflector
- Polycarbonate lens
- Housing finish: Electro deposited, black
- Halogen bulb: H4 12V 60/55W
- Options: H4 24V 75/70W available upon request
- For right hand driving / left hand traffic

NS-2257 200mm Headlamp With Position Lamp

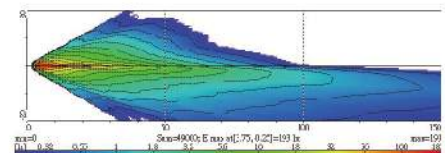
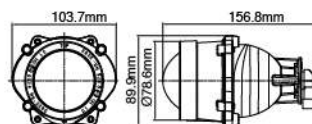
ECE Homologation



- Die-cast aluminum multi-surface reflector
- Polycarbonate lens
- Housing finish: Electro deposited, black
- Halogen bulb: H4 12V 60/55W; 12V 5W
- Options: H4 24V 75/70W; 24V 5W available upon request
- For right hand driving / left hand traffic

NS-2260 Low Beam Headlamp

ECE Homologation



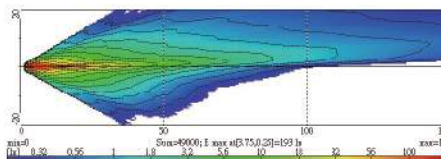
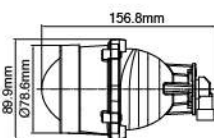
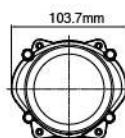
- Die-cast aluminum multi-surface reflector
- Convex lens
- Plastic mounting frame
- Halogen bulb: 9005/HB3 12V 60W
- For left hand driving / right hand traffic



NS-2262 Low Beam Headlamp

ECE Homologation

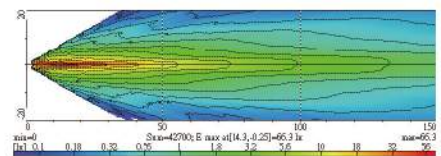
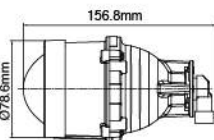
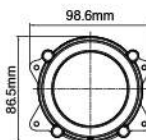
- Die-cast aluminum multi-surface reflector
- Convex lens
- Plastic mounting frame
- Halogen bulb: 9005/HB3 12V 60W
- For right hand driving / left hand traffic



NS-2266 High Beam Headlamp

ECE Homologation

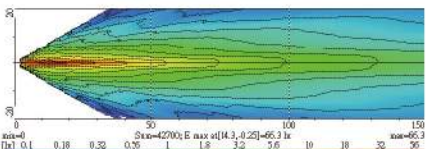
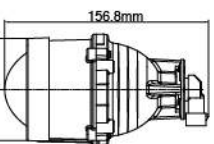
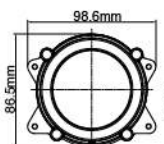
- Die-cast aluminum multi-surface reflector
- Convex lens
- Plastic mounting frame
- Halogen bulb: 9005/HB3 12V 60W

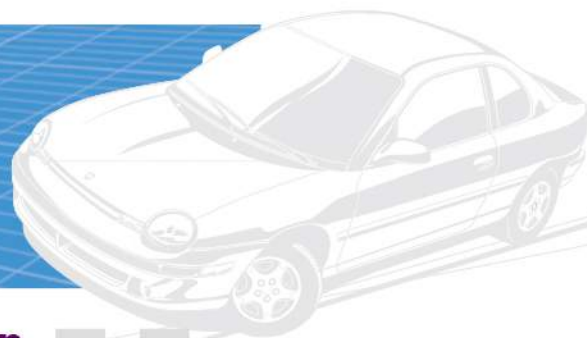


NS-2268 High Beam Headlamp

SAE Homologation

- Die-cast aluminum multi-surface reflector
- Convex lens
- Plastic mounting frame
- Halogen bulb: 9005 / HB3 12V 60W



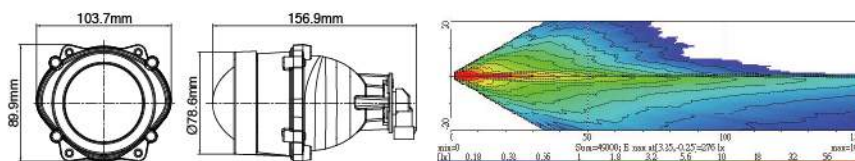


NS-2268 Low Beam Headlamp

SAE Homologation



- Die-cast aluminum multi-surface reflector
- Convex lens
- Plastic mounting frame
- Halogen bulb: 9005/HB3 12V 60W

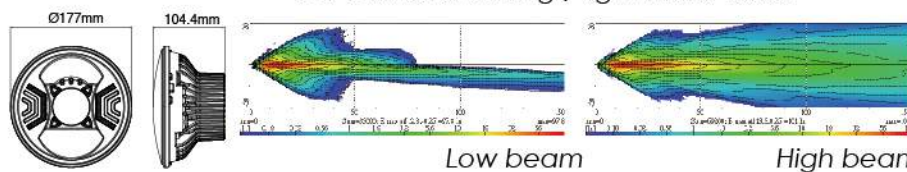


NS-2263 7" LED High / Low Beam Headlamp With Position Lamp

ECE Homologation



- EMI Class 3 according to CISPR25
- Ingress Protection IP67
- Aluminum heatsink and plastic reflector
- Polycarbonate lens
- Built-in driver
- Light source:
High beam – High power 4-chip LED x 2 pcs
Low beam – High power 4-chip LED x 2 pcs
Position – LED x 4 pcs
- Multivolt (9-33DC) suitable for 12V and 24V vehicle
- For left hand driving / right hand traffic

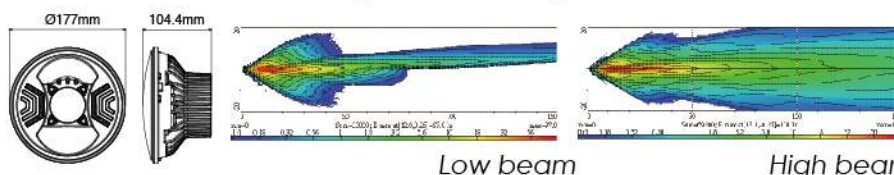


NS-2264 7" LED High / Low Beam Headlamp With Position Lamp

ECE Homologation



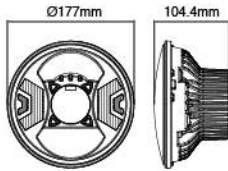
- EMI Class 3 according to CISPR25
- Ingress Protection IP67
- Aluminum heatsink and plastic reflector
- Polycarbonate lens
- Built-in driver
- Light source:
High beam – High power 4-chip LED x 2 pcs
Low beam – High power 4-chip LED x 2 pcs
Position – LED x 4 pcs
- Multivolt (9-33DC) suitable for 12V and 24V vehicle
- For right hand driving / left hand traffic



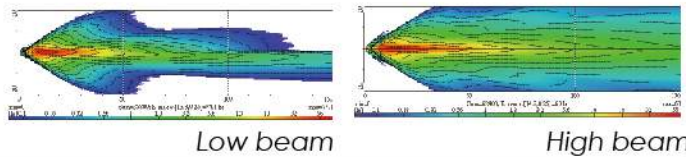


NS-2265 7" LED High / Low Beam Headlamp With Indicator Lamp ↗ ↘

SAE Homologation

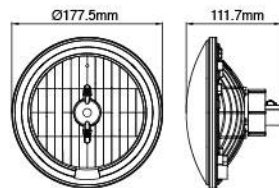


- ▲ EMI Class 3 according to CISPR25
- ▲ Ingress Protection IP67
- ▲ Aluminum heatsink and plastic reflector
- ▲ Polycarbonate lens
- ▲ Built-in driver
- ▲ Light source:
 - High beam – High power 4-chip LED x 2 pcs
 - Low beam – High power 4-chip LED x 2 pcs
 - Indicator – LED x 18 pcs
- ▲ Multivolt (9-33DC) suitable for 12V and 24V vehicle

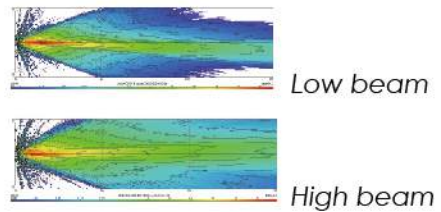


NS-2267 Headlamp with LED Position Ring ↗ ↘

SAE Homologation

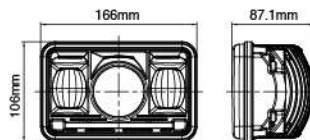


- ▲ Ingress protection IP55
- ▲ Aluminum reflector
- ▲ Crystal glass lens
- ▲ Halogen bulb: 9007/HB5 12V 65/55W
- ▲ LED: White x 2 pcs

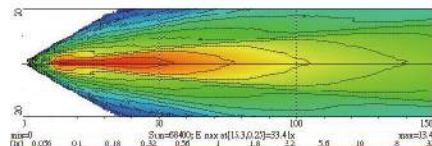


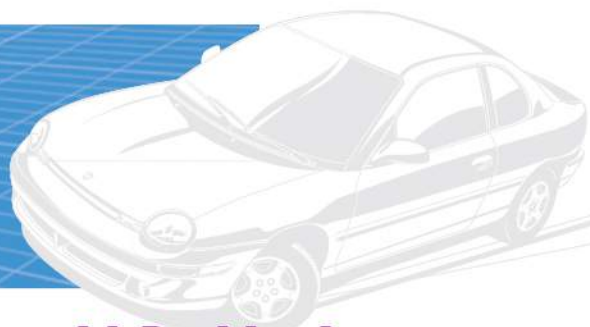
NS-2269H LED High Beam Headlamp with Position Lamp ↗ ↘

SAE Homologation



- ▲ EMI Class 3 according to CISPR25
- ▲ Ingress protection IP68
- ▲ Aluminum housing as heatsink
- ▲ Polycarbonate reflector
- ▲ Polycarbonate lens
- ▲ Light source:
 - High Beam - High power LED x 11 pcs
 - Position – LED x 2 pcs
- ▲ Multivolt (9-33DC) suitable for 12V and 24V vehicle



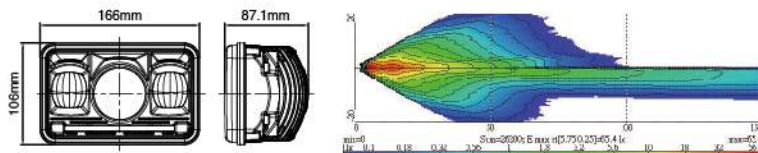


NS-2269L LED Low Beam Headlamp with Position Lamp

SAE Homologation



- EMI Class 3 according to CISPR25
- Ingress protection IP68
- Aluminum housing as heatsink
- Polycarbonate reflector
- Polycarbonate lens
- Light source:
Low Beam - High power LED x 12 pcs
Position - LED x 2 pcs
- Multivolt (9-33DC) suitable for 12V and 24V vehicle

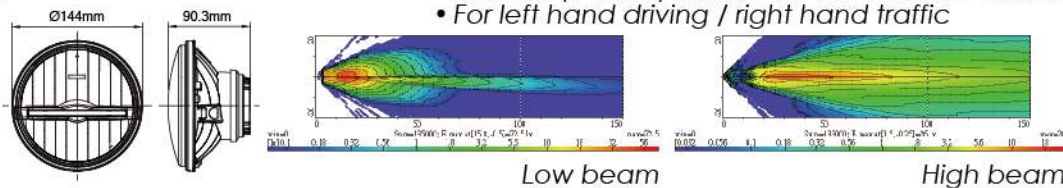


NS-2270 5-3/4" LED High / Low Beam Headlamp With Position Lamp

ECE Homologation



- EMI Class 3 according to CISPR25
- Ingress Protection IP66
- Aluminum heatsink and reflector
- Polycarbonate lens
- Built-in driver
- Light source:
High beam - High power 4-chip LED x 1 pc
Low beam - High power 5-chip LED x 1 pc
Position - LED x 2 pcs
- Multivolt (9-33DC) suitable for 12V and 24V vehicle
- For left hand driving / right hand traffic

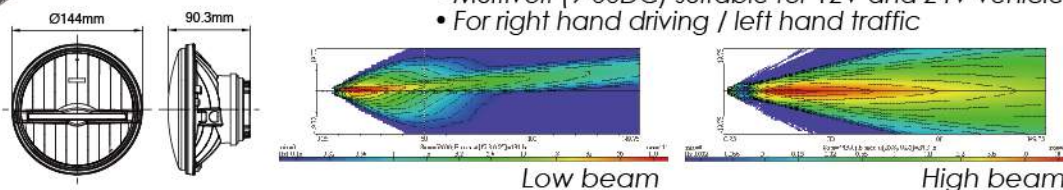


NS-2273 5-3/4" LED High / Low Beam Headlamp With Position Lamp

ECE Homologation



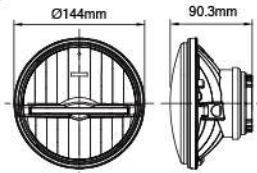
- EMI Class 3 according to CISPR25
- Ingress Protection IP66
- Aluminum heatsink and reflector
- Polycarbonate lens
- Built-in driver
- Light source:
High beam - High power 4-chip LED x 1 pc
Low beam - High power 5-chip LED x 1 pc
Position - LED x 2 pcs
- Multivolt (9-33DC) suitable for 12V and 24V vehicle
- For right hand driving / left hand traffic



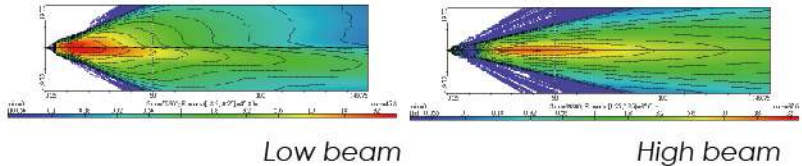


NS-2271 5-3/4" LED High / Low Beam Headlamp With Position Lamp

SAE Homologation

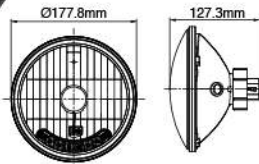


- EMI Class 3 according to CISPR25
- Ingress Protection IP66
- Aluminum heatsink and reflector
- Polycarbonate lens
- Built-in driver
- Light source:
 - High beam - High power 4-chip LED x 1 pc
 - Low beam - High power 5-chip LED x 1 pc
 - Position - LED x 2 pcs
- Multivolt (9-33DC) suitable for 12V and 24V vehicle

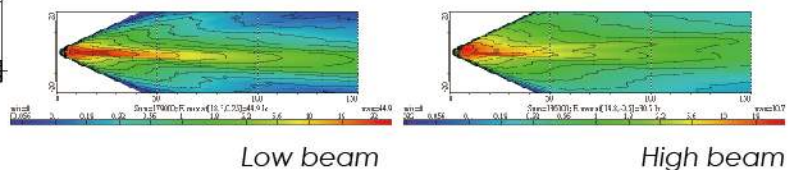


NS-2272 7" High / Low Beam Headlamp with LED Indicator Lamp

SAE Homologation

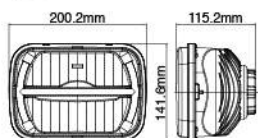


- Die-cast aluminum multi-surface reflector
- Crystal glass lens
- Housing finish: Electro deposited, black
- Halogen bulb: 9007 / HB5 12V 65 / 55W
- LED: Amber x 6 pcs

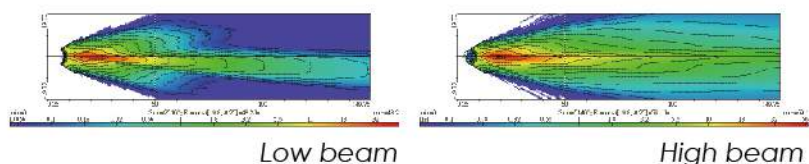


NS-2274 200mm LED High / Low Beam Headlamp With Position Lamp

SAE Homologation



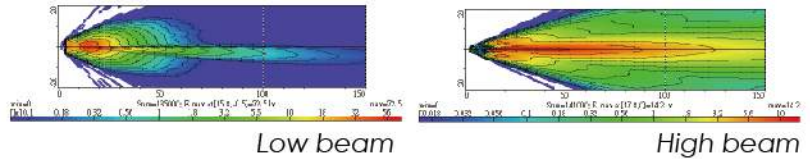
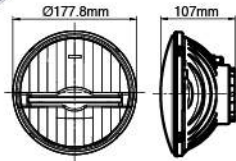
- EMI Class 3 according to CISPR25
- Ingress Protection IP66
- Aluminum heatsink and plastic reflector
- Polycarbonate lens
- Built-in driver
- Light source:
 - High beam - High power LED x 3 pcs
 - Low beam - High power 4-chip LED x 1 pc
 - Position - LED x 3 pcs
- Multivolt (9-33DC) suitable for 12V and 24V vehicle





NS-2275 7" LED High / Low Beam Headlamp With Position Lamp

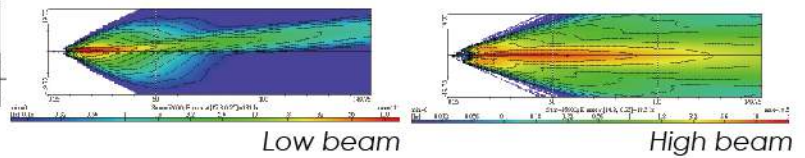
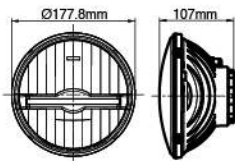
ECE Homologation



- EMI Class 3 according to CISPR25
- Ingress Protection IP66
- Aluminum heatsink and plastic reflector
- Polycarbonate lens
- Built-in driver
- Light source:
 - High beam - High power 4-chip LED x 1 pc
 - Low beam - High power 4-chip LED x 1 pc
 - Position - LED x 2 pcs
- Multivolt (9-33DC) suitable for 12V and 24V vehicle
- For left hand driving / right hand traffic

NS-2276 7" LED High / Low Beam Headlamp With Position Lamp

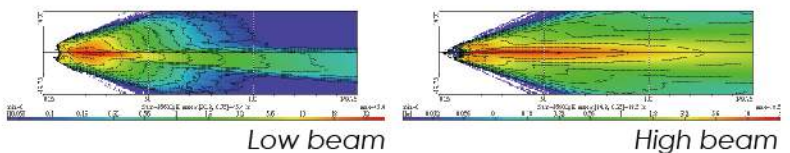
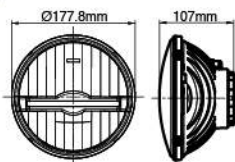
ECE Homologation



- EMI Class 3 according to CISPR25
- Ingress Protection IP66
- Aluminum heatsink and plastic reflector
- Polycarbonate lens
- Built-in driver
- Light source:
 - High beam - High power 4-chip LED x 1 pc
 - Low beam - High power 4-chip LED x 1 pc
 - Position - LED x 2 pcs
- Multivolt (9-33DC) suitable for 12V and 24V vehicle
- For right hand driving / left hand traffic

NS-2277 7" LED High / Low Beam Headlamp With Position Lamp

SAE Homologation



- EMI Class 3 according to CISPR25
- Ingress Protection IP66
- Aluminum heatsink and plastic reflector
- Polycarbonate lens
- Built-in driver
- Light source:
 - High beam - High power 4-chip LED x 1 pc
 - Low beam - High power 4-chip LED x 1 pc
 - Position - LED x 2 pcs
- Multivolt (9-33DC) suitable for 12V and 24V vehicle

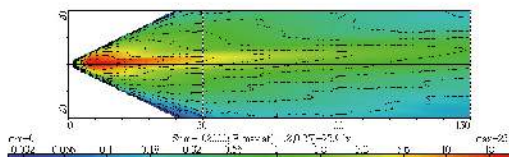
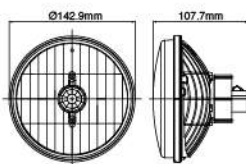


NS-2278 5-3/4" High Beam Headlamp

SAE Homologation



- Die-cast aluminum multi-surface reflector
- Crystal glass lens
- Housing finish: Electro deposited, black
- Halogen bulb: 9007 / HB5 12V 65 / 55W
- Includes protective rubber cover

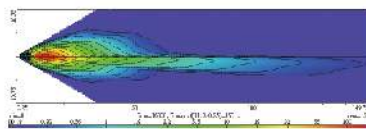
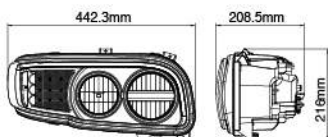


NS-2282 LED Headlamp

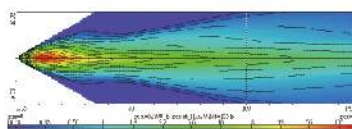
SAE Homologation



- EMI Class 3 according to CISPR25
- Ingress Protection IP66
- Plastic Housing and reflector
- Polycarbonate lens
- Light source:
 - High beam - High power LED x 2 pcs & 2-chip LED x 1 pc
 - Low beam - High power 4-chip LED x 1 pc
- Position - LED x 2 pcs
- Indicator - LED x 9 pcs
- Side Marker - LED x 3 pcs
- Handed: R/H and L/H
- Fits for PB388/389



Low beam



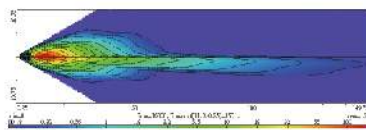
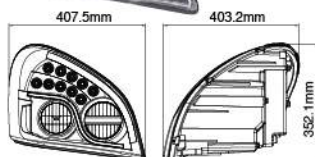
High beam

NS-2284 LED Headlamp

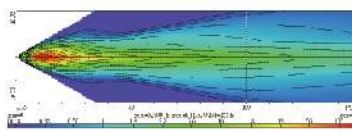
SAE Homologation



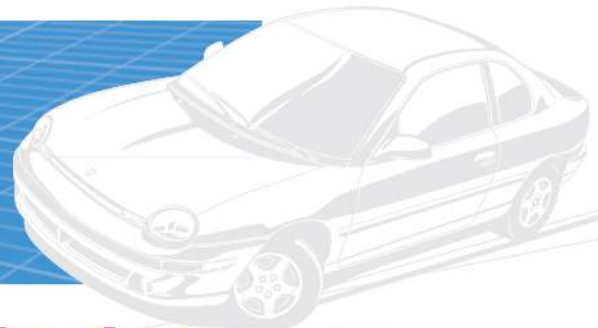
- EMI Class 3 according to CISPR25
- Ingress Protection IP66
- Plastic Housing and reflector
- Polycarbonate lens
- Light source:
 - High beam - High power LED x 2 pcs & 2-chip LED x 1 pc
 - Low beam - High power 4-chip LED x 1 pc
- DRL - LED x 11 pcs
- Position - LED x 2 pcs
- Indicator - LED x 10 pcs
- Side Marker - LED x 3 pcs
- Handed: R/H and L/H
- Fits for FL Cascadia



Low beam

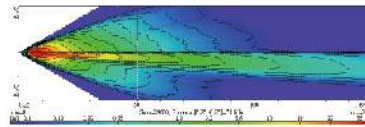
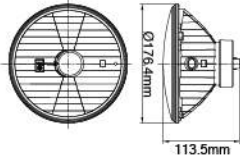


High beam

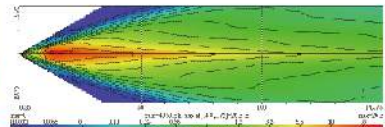


NS-2285 7" Headlamp With Glass Lens

SAE Homologation



Low beam

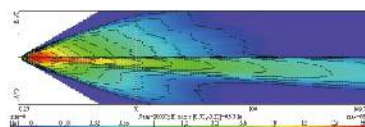
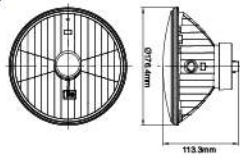


High beam

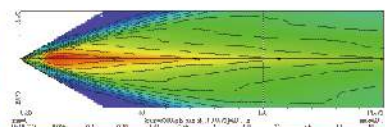
- Fits H6017 / H6024 applications
- Die-cast aluminum multi-surface reflector
- Crystal glass lens
- Housing finish: Electro deposited, black
- Halogen bulb: HB2 12V 60/55W
- Includes protective rubber cover
- Applicable to visual alignment

NS-2286 7" Headlamp With PC Lens

SAE Homologation



Low beam

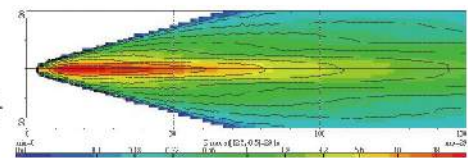
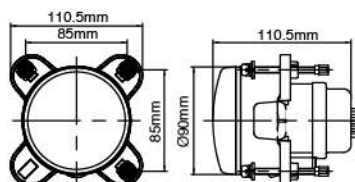


High beam

- Fits H6017 / H6024 applications
- Die-cast aluminum multi-surface reflector
- Polycarbonate lens
- Housing finish: Electro deposited, black
- Halogen bulb: HB2 12V 60/55W
- Includes protective rubber cover
- Applicable to visual alignment

NS-4301H Ø90mm High Beam Headlamp With Position Lamp

ECE Homologation



- Die-cast aluminum multi-surface reflector
- Crystal glass lens
- Aluminum mounting frame
- Halogen bulb: H7 12V 55W; 12V 5W
- Options: H7 24V 70W; 24V 5W available upon request



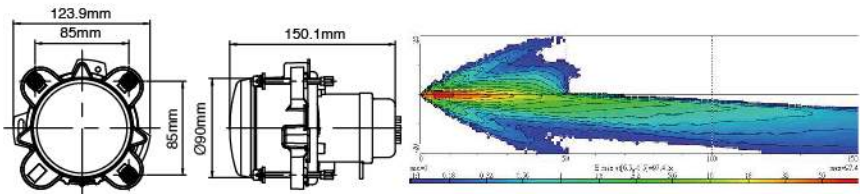
SIRIUS®

NS-4301L Ø90mm Low Beam Headlamp ↗ ↗

ECE Homologation



- Die-cast aluminum multi-surface reflector
- Crystal glass lens
- Aluminum mounting frame
- Halogen bulb: H7 12V 55W
- For left hand driving / right hand traffic
- Options: H7 24V 70W available upon request

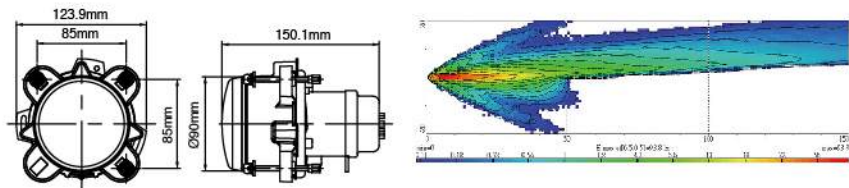


NS-4303 Ø 90mm Low Beam Headlamp ↗ ↗

ECE Homologation



- Die-cast aluminum multi-surface reflector
- Crystal glass lens
- Aluminum mounting frame
- Halogen bulb: H7 12V 55W
- Options: H7 24V 70W available upon request
- For right hand driving / left hand traffic

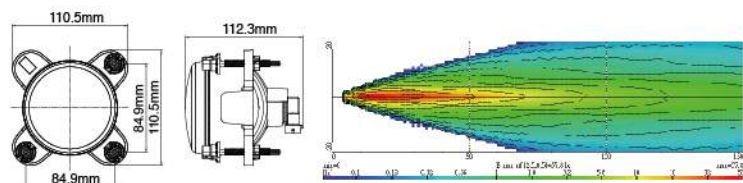


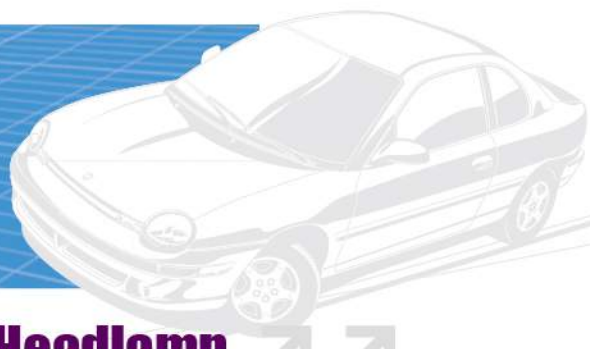
NS-4313 Ø90mm High Beam Headlamp ↗ ↗

ECE Homologation



- Die-cast aluminum multi-surface reflector
- Crystal glass lens
- Aluminum mounting frame
- Halogen bulb: H9 12V 65W

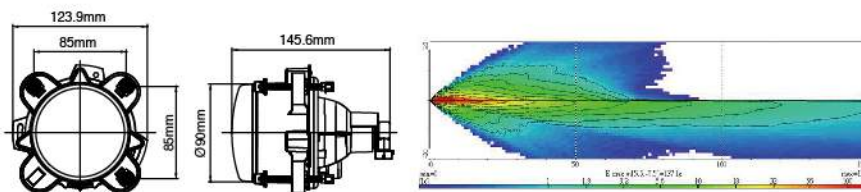




NS-4302L Ø90mm Low Beam Headlamp

SAE Homologation

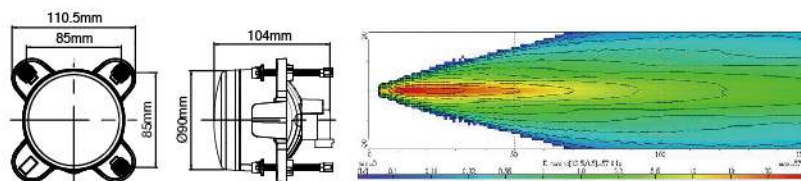
- Die-cast aluminum multi-surface reflector
- Crystal glass lens
- Aluminum mounting frame
- Halogen bulb: H9 12V 65W



NS-4302H Ø90mm High Beam Headlamp With Position Lamp

SAE Homologation

- Die-cast aluminum multi-surface reflector
- Crystal glass lens
- Aluminum mounting frame
- Halogen bulb: H9 12V 65W; 12V 5W

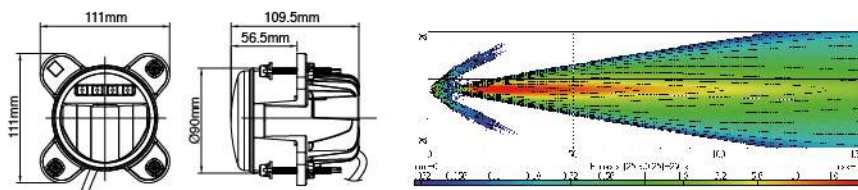


NS-4305H Ø90mm LED High Beam Headlamp With Position Lamp

ECE Homologation
Design Patent

Design Patent
Taiwan: 99303757
EU: 001764606
USA: 29/378260

- EMI Class 5 according to CISPR25
- Ingress Protection IP68
- Aluminum heatsink and plastic reflector
- Polycarbonate lens
- Driver built outside
- Light source:
High beam - High power 4-chip LED x 1 pc
Position - Flux LED x 4 pcs
- Multivolt (9-33DC) suitable for 12V and 24V vehicle



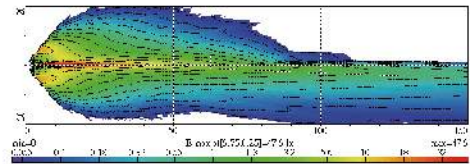
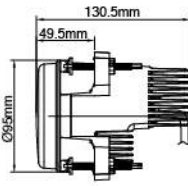
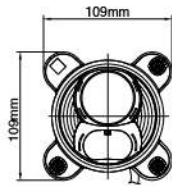


NS-4305L Ø90mm LED Low Beam Headlamp ↗ ↗

**ECE Homologation
Design Patent**

Design Patent
Taiwan: 99303758
EU: 001764606
USA: 29/378262

- EMI Class 5 according to CISPR25
- Ingress Protection IP68
- Aluminum heatsink and plastic reflector
- Polycarbonate lens
- Driver built outside
- Light source: High power 4-chip LED x 1 pc & 2-chip LED x 1 pc
- Multivolt (9-33DC) suitable for 12V and 24V vehicle
- For left hand driving / right hand traffic

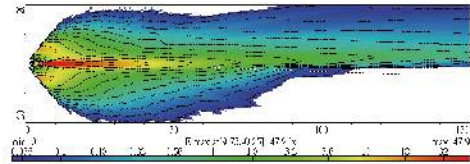
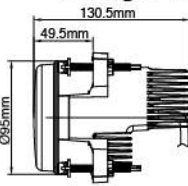
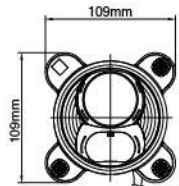


NS-4306 Ø90mm LED Low Beam Headlamp ↗ ↗

**ECE Homologation
Design Patent**

Design Patent
Taiwan: 99303758
EU: 001764606
USA: 29/378262

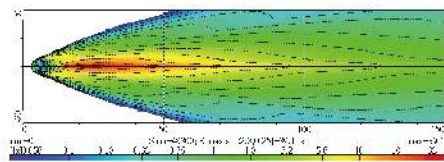
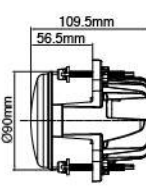
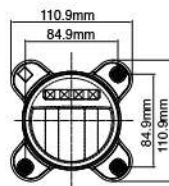
- EMI Class 3 according to CISPR25
- Ingress Protection IP68
- Aluminum heatsink and plastic reflector
- Polycarbonate lens
- Driver built outside
- Light source: High power 4-chip LED x 1 pc & 2-chip LED x 1 pc
- Multivolt (9-33DC) suitable for 12V and 24V vehicle
- For right hand driving / left hand traffic



NS-4307H Ø90mm LED High Beam Headlamp ↗ ↗

**SAE Homologation
Design Patent**

- EMI Class 3 according to CISPR25
- Ingress Protection IP67
- Aluminum heatsink and plastic reflector
- Polycarbonate lens
- Driver built outside
- Light source: High power 4-chip LED x 1 pc
- Multivolt (9-33DC) suitable for 12V and 24V vehicle

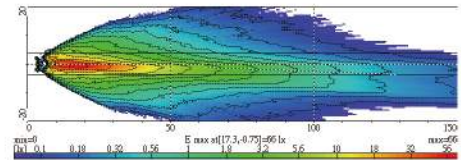
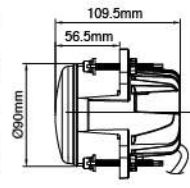
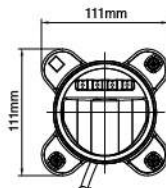




NS-4307L Ø90mm LED Low Beam Headlamp With Position Lamp

SAE Homologation
Design Patent

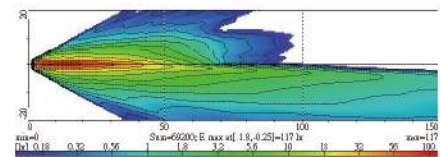
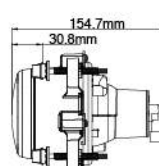
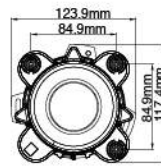
- EMI Class 3 according to CISPR25
- Ingress Protection IP67
- Aluminum heatsink and plastic reflector
- Polycarbonate lens
- Driver built outside
- Light source:
Low beam - High power 4-chip LED x 1 pc
Position - Flux LED x 4 pcs
- Multivolt (9-33DC) suitable for 12V and 24V vehicle



NS-4308 Ø90mm Low Beam Headlamp

ECE Homologation

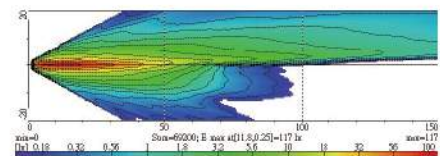
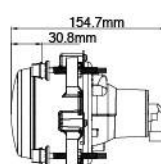
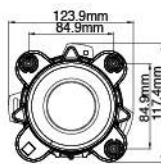
- Die-cast aluminum multi-surface reflector
- Crystal glass lens
- Aluminum mounting frame
- Halogen bulb: 9005/HB3 12V 60W
- For left hand driving / right hand traffic



NS-4309 Ø90mm Low Beam Headlamp

ECE Homologation

- Die-cast aluminum multi-surface reflector
- Crystal glass lens
- Aluminum mounting frame
- Halogen bulb: 9005/HB3 12V 60W
- For right hand driving / left hand traffic



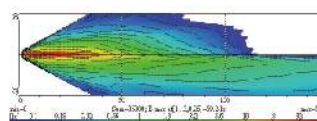
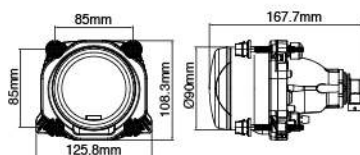


NS-4310 Ø90mm High / Low Beam Headlamp ↗ ↗

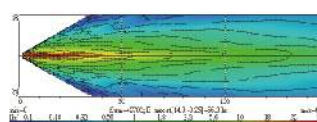
ECE Homologation



- Aluminum heatsink and reflector
- Polycarbonate lens
- Plastic mounting frame
- Halogen bulb: H9 12V 65W
- For left hand driving / right hand traffic



Low Beam



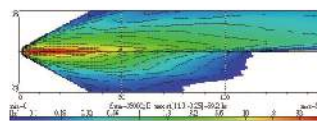
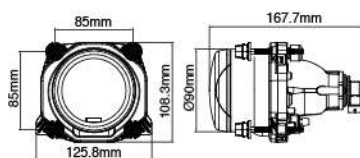
High Beam

NS-4311 Ø90mm High / Low Beam Headlamp ↗ ↗

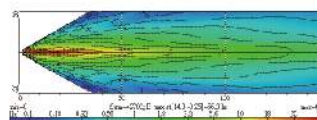
ECE Homologation



- Aluminum heatsink and reflector
- Polycarbonate lens
- Plastic mounting frame
- Halogen bulb: H9 12V 65W
- For right hand driving / left hand traffic



Low Beam



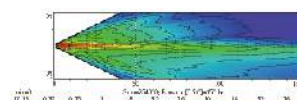
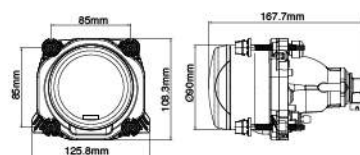
High Beam

NS-4317 Ø90mm High / Low Beam Headlamp ↗ ↗

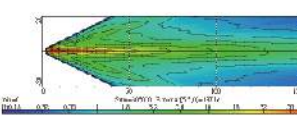
SAE Homologation



- Aluminum heatsink and reflector
- Polycarbonate lens
- Plastic mounting frame
- Halogen bulb: H9 12V 65W



Low beam



High beam

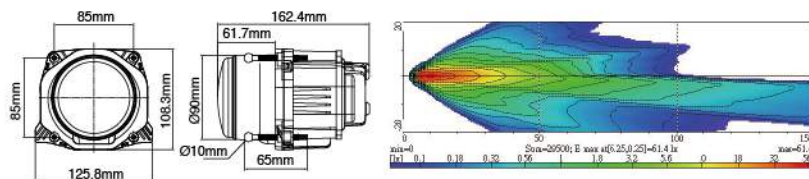


NS-4312 Ø90mm LED Low Beam Headlamp

ECE Homologation



- EMI Class 3 according to CISPR25
- Ingress Protection IP66
- Aluminum heatsink and reflector
- Polycarbonate lens
- Plastic mounting frame
- Built-in driver
- Light source: High power 4-chip LED x 2 pcs
- Multivolt (9-33DC) suitable for 12V and 24V vehicle
- For left hand driving / right hand traffic

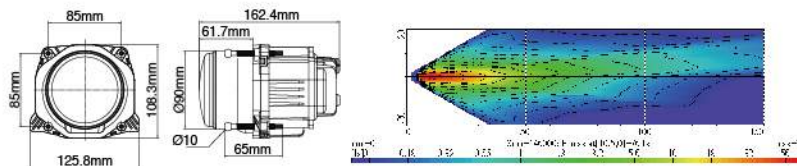


NS-4318 Ø90mm LED Low Beam Headlamp

ECE Homologation



- EMI Class 3 according to CISPR25
- Ingress Protection IP66
- Aluminum heatsink and reflector
- Polycarbonate lens
- Plastic mounting frame
- Built-in driver
- Light source: High power 4-chip LED x 2 pcs
- Multivolt (9-33DC) suitable for 12V and 24V vehicle
- For right hand driving / left hand traffic

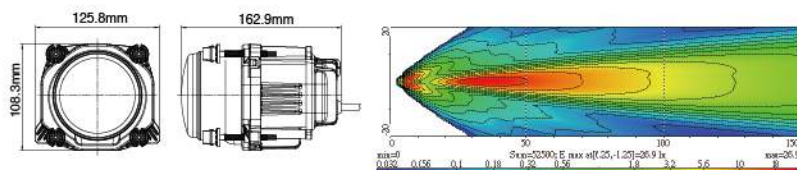


NS-4314 Ø90mm LED High Beam Headlamp

ECE Homologation



- EMI Class 3 according to CISPR25
- Ingress Protection IP66
- Aluminum heatsink and reflector
- Polycarbonate lens
- Plastic mounting frame
- Built-in driver
- Light source: High power 4-chip x 2 pcs
- Multivolt (9-33DC) suitable for 12V and 24V vehicle



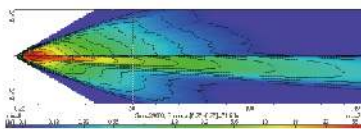
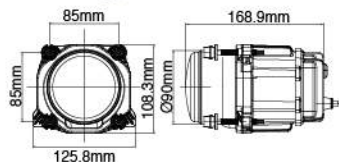


NS-4304 Ø90mm LED High / Low Beam Headlamp ↗ ↘

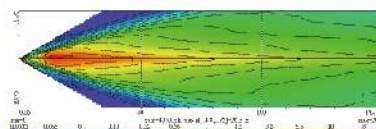
SAE Homologation



- EMI Class 3 according to CISPR25
- Ingress Protection IP67
- Aluminum heatsink and plastic reflector
- Polycarbonate lens
- Built-in driver
- Light source:
 - High beam - High power 4-chip LED x 2 pcs
 - Low beam - High power 5-chip LED x 2 pcs
- Multivolt (9-33DC) suitable for 12V and 24V vehicle



Low beam



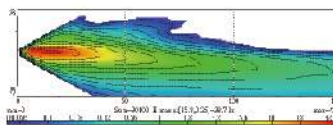
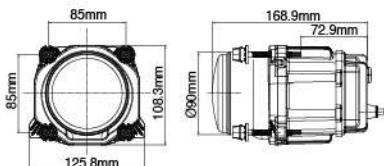
High beam

NS-4315 Ø90mm LED High / Low Beam Headlamp ↗ ↘

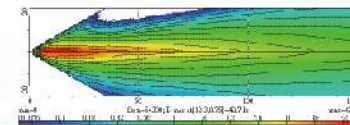
ECE Homologation



- EMI Class 3 according to CISPR25
- Ingress Protection IP67
- Aluminum heatsink and plastic reflector
- Polycarbonate lens
- Plastic mounting frame
- Built-in driver
- Light source:
 - High beam - High power 4-chip LED x 4 pcs
 - Low beam - High power 4-chip LED x 2 pcs
- Multivolt (9-33DC) suitable for 12V and 24V vehicle
- For left hand driving / right hand traffic



Low beam



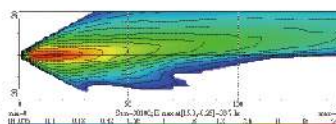
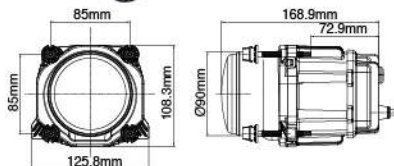
High beam

NS-4316 Ø90mm LED High / Low Beam Headlamp ↗ ↘

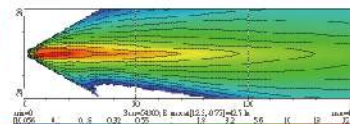
ECE Homologation



- EMI Class 3 according to CISPR25
- Ingress Protection IP67
- Aluminum heatsink and plastic reflector
- Polycarbonate lens
- Plastic mounting frame
- Built-in driver
- Light source:
 - High beam - High power 4-chip LED x 4 pcs
 - Low beam - High power 4-chip LED x 2 pcs
- Multivolt (9-33DC) suitable for 12V and 24V vehicle
- For right hand driving / left hand traffic



Low beam



High beam