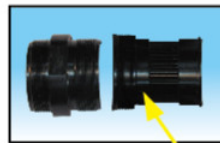
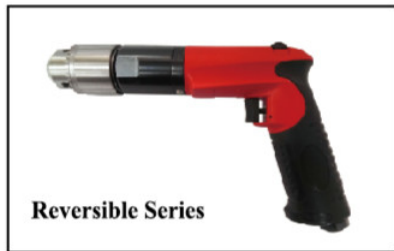




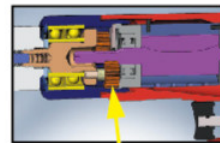
The force will go in-line with the tool direction

Features

- Ideal for all general industrial drilling tasks, such as drilling, hole sawing, valve guide reaming & wire brushing on accessory and air conditioner installation, engine work & auto body repair.
- Excellent power-to-weight ratio gets the job done with less fatigue.
- Compact & lightweight for easy handling.
- Three gears mechanism for smooth operation and extended tool life.
- High performance motor delivers increased speed and power for fast, smooth hole drilling.
- Variable throttle control allows slow starting to protect the work piece, along with high speed running for fast completion.
- Rigid bearing design in output spindle provides minimum run-out.
- With industrial grade drill chuck.



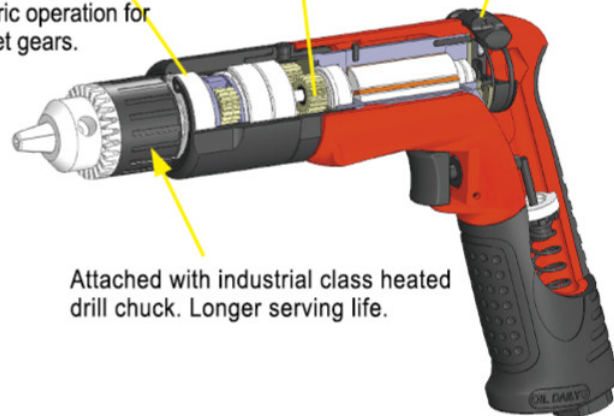
Inside build-in gear ring offering more precisely Concentric operation for the planet gears.



Needle bearing inside



Forward and Reverse switch



Attached with industrial class heated drill chuck. Longer serving life.

Specification

Model No.	Chuck Capacity	Free Speed (rpm)	Weight (kg)	Length (mm)	Spindle	Remark
TD-4343	3/8"	2,100	1.04	215	3/8"-24	0.6Hp Reversible Type
TD-4429	1/2"	350	1.4	240	1/2"-20	
TD-4437	1/2"	700	1.4	252	1/2"-20	
TD-4219	1/4"	4,000	1	185	3/8"-24	0.6Hp Non-Reversible Type
TD-4342	3/8"	4,000	1	200	3/8"-24	
TD-4428	1/2"	500	1.4	240	1/2"-20	
TD-4348	3/8"	2,800	1	200	3/8"-24	
TD-4222	1/4"	6,000	0.95	185	3/8"-24	
TD-4349	3/8"	6,000	0.95	185	3/8"-24	
TD-4433	1/2"	700	1.4	240	1/2"-20	
TD-4350	3/8"	2,000	1.1	195	3/8"-24	1.0Hp Reversible Type
TD-4345	3/8"	3,000	1.1	195	3/8"-24	
TD-4431	1/2"	1,000	1.6	230	1/2"-20	
TD-4432	1/2"	300	1.5	230	1/2"-20	
TD-4346	3/8"	3,800	1.1	218	3/8"-24	1.0Hp Non-Reversible Type
TD-4220	1/4"	4,000	1.05	204	3/8"-24	
TD-4344	3/8"	2,600	1.1	180	3/8"-24	
TD-4430	1/2"	1,000	1.5	215	1/2"-20	
TD-4351	3/8"	21,000	1.04	200	3/8"-24	
TD-4434	1/2"	600	1.5	215	1/2"-20	
TD-4436	1/2"	3,300	1.1	218	1/2"-20	
TD-4435	1/2"	2,600	1.1	218	1/2"-20	

※Air inlet:1/4"(Pt/Npt),Air Hose:3/8"(I.d),Air Consumption:4cfm(113.2L/min)



TD-4030
3/8" Heavy Duty Air Drill
TD-4030C:With Keyless Chuck



TD-4031
1/4" Heavy Duty Air Reversible Drill
TD-4031C:With Keyless Chuck



TD-4328
3/8" Air Drill (2,200Rpm)
TD-4328C:With Keyless Chuck



TD-4034
3/8" Heavy Duty Air Reversible Drill
TD-4034C:With Keyless Chuck



TD-4037
3/8" Super Duty Air Reversible Drill
TD-4037C:With Keyless Chuck



TD-4329
3/8" Heavy Duty Air Reversible Drill
TD-4329C:With Keyless Chuck



TD-4302
3/8" Heavy Duty Air Reversible Drill
TD-4302C:With Keyless Chuck



TD-4305
3/8" Heavy Duty Air Reversible Drill
TD-4305C:With Keyless Chuck



TD-4300
3/8" Heavy Duty Air Reversible Drill
TD-4300C:With Keyless Chuck

Specification (at 90 PSI)

Model No.	Drilling Cap.	Free Speed (Rpm)	Overall Length		Air Inlet (Pt/Npt)	Air Hose (I.D.)	Avg. Air Consumption		Net Weight	
			inch	mm			Cfm	L/Min.	Kgs	Lbs
TD-4030(C)	3/8"	2,200	6-1/2"	165	1/4"	3/8"	6	170	0.9	2.0
TD-4031(C)	3/8"	1,800	6-1/2"	165	1/4"	3/8"	4	113	0.9	2.0
TD-4034(C)	3/8"	1,800	7"	180	1/4"	3/8"	4	113	1.2	3.0
TD-4037(C)	3/8"	1,800	6-1/2"	178	1/4"	3/8"	6	170	1.1	2.4
TD-4300(C)	3/8"	2,600	6-7/10"	170	1/4"	3/8"	6.5	184	1.02	2.25
TD-4302(C)	3/8"	1,700	7-7/10"	195	1/4"	3/8"	4	113	1.2	2.65
TD-4305(C)	3/8"	2,300	8"	200	1/4"	3/8"	3	85	1.1	2.4
TD-4328(C)	3/8"	1,800	7-2/25"	185	1/4"	3/8"	4	113	1.1	2.4
TD-4329(C)	3/8"	1,800	7-7/25"	185	1/4"	3/8"	4	113	1.2	2.4



TD-4035
3/8" Heavy Duty Air Angle Drill
TD-4035C:With Keyless Chuck



TD-4036
3/8" Heavy Duty Air Angle Reversible Drill
TD-4036C:With Keyless Chuck



TD-4038/TD-4039
3/8" Heavy Duty Air Straight Drill (2600/4500 Rpm)
TD-4038C/TD-4039C
With Keyless Chuck



TD-4332/TD-4333
3/8" Heavy Duty Air Straight Drill (2,600/4,500Rpm)
TD-4332C/TD-4333C
With Keyless Chuck



TD-4325
3/8" Heavy Duty Air Reversible Straight Drill
TD-4325C
With Keyless Chuck



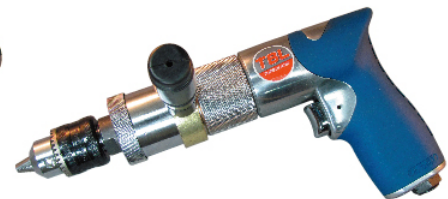
TD-4337
3/8" Heavy Duty Air Straight Drill(6,000Rpm)



TD-4301
3/8" Heavy Duty Air Reversible Drill (Two Gear)
TD-4301C
With Keyless Chuck



TD-4036D
3/8" Heavy Duty 20mm Deep Corner Angle Air Reversible Drill
TD-4036DC
With Keyless Chuck



TD-4335
3/8" Heavy Duty Impact Reversible Drill(28,500Bpm)
TD-4335C
With Keyless Chuck

Specification (at 90 PSI)

Model No.	Drilling Cap.	Free Speed (Rpm)	Overall Length		Air Inlet (Pt/Npt)	Air Hose (I.D.)	Avg.Air Consumption		Net Weight	
			inch	mm			Cfm	L/Min.	Kgs	Lbs
TD-4035(C)	3/8"	1,900	7-1/2"	190	1/4"	3/8"	5	141	0.96	2.1
TD-4036(C/D)	3/8"	1,800	8-1/4"	210	1/4"	3/8"	4	113	1.1	2.42
TD-4038(C)	3/8"	2,600	8-1/2"	216	1/4"	3/8"	6	170	0.9	2.0
TD-4039(C)	3/8"	4,500	7-1/2"	190	1/4"	3/8"	6	170	0.9	2.0
TD-4301(C)	3/8"	1,400	8-1/2"	213	1/4"	3/8"	6	170	1.5	3.31
TD-4325(C)	3/8"	1,800	8"	203	1/4"	3/8"	4	113	1.1	2.42
TD-4337(C)	3/8"	6,000	8-1/4"	210	1/4"	3/8"	4	113	0.6	1.32
TD-4332(C)	3/8"	2,600	8-1/2"	215	1/4"	3/8"	4	113	1.04	2.3
TD-4333(C)	3/8"	4,500	8-1/2"	215	1/4"	3/8"	4	113	1.04	2.3
TD-4335(C)	3/8"	1,800	9-7/10"	247	1/4"	3/8"	7	198	1.84	4.05



TD-4040/TD-4041
1/2" Heavy Duty Air Drill
1/2" Heavy Duty Air Reversible Drill
TD-4040C/TD-4041C
With Keyless Chuck



TD-4047
1/2" Heavy Duty Air
Reversible Drill(500Rpm)
TD-407C
With Keyless Chuck



TD-4044
1/2" Heavy Duty Air Reversible Drill
TD-4044C:With Keyless Chuck



TD-4400
1/2" Super Duty Air Reversible Drill
TD-4400C:With Keyless Chuck



TD-4421/TD-4422
1/2" Heavy Duty Air Drill
1/2" Heavy Duty Air Reversible Drill (800Rpm)
TD-4421C/TD-4422C
With Keyless Chuck



TD-4423
1/2" Heavy Duty Air
Reversible Drill (500 Rpm)
TD-4423C:With Keyless Chuck



TD-4408
1/2" Heavy Duty Air Straight
Reversible Drill
TD-4408C
With Keyless Chuck



TD-4403
1/2" Heavy Duty Air
Reversible Drill
TD-4403C:With Keyless Chuck



TD-4048
1/2" Heavy Duty Air Angle
Reversible Drill
TD-4048C:With Keyless Chuck

Specification (at 90 PSI)

Model No.	Drilling Cap.	Free Speed (Rpm)	Overall Length		Air Inlet (Pt/Npt)	Air Hose (I.D.)	Avg. Air Consumption		Net Weight	
			inch	mm			Cfm	L/Min.	Kgs	Lbs
TD-4040(C)	1/2"	800	7"	180	1/4"	3/8"	8	226	1.1	2.42
TD-4041(C)	1/2"	800	7"	180	1/4"	3/8"	8	226	1.2	3.0
TD-4044(C)	1/2"	750	8-3/10"	211	1/4"	3/8"	8	226	1.4	3.1
TD-4047(C)	1/2"	500	7"	180	1/4"	3/8"	8	226	1.2	3.0
TD-4048(C)	1/2"	500	7-1/4"	184	1/4"	3/8"	8	226	1.2	3.0
TD-4400(C)	1/2"	700	8"	205	1/4"	3/8"	8	226	1.4	3.1
TD-4403(C)	1/2"	500	7-1/2"	190	1/4"	3/8"	8	226	1.4	3.1
TD-4408(C)	1/2"	800	8-1/2"	216	1/4"	3/8"	2	85	1.2	2.6
TD-4421(C)	1/2"	800	8-3/10"	211	1/4"	3/8"	8	226	1.4	3.1
TD-4422(C)	1/2"	800	8-3/10"	211	1/4"	3/8"	8	226	1.3	3.1
TD-4423(C)	1/2"	500	8-1/2"	216	1/4"	3/8"	8	226	1.6	3.3



TD-4015
16mm Industrial 4 Gears
Driven Air Reversible Drill



TD-4016/TD-4017
16/19mm Industrial 4 Gears
Driven Air Reversible Drill



TD-4015T
Industrial 4 Gears Driven With
Tapper Spindle Air Reversible Drill



TD-4016T
Industrial 4 Gears Driven With
Tapper Spindle Air Reversible Drill



TD-4029
1/4"x28 UNF Air Angle Drill



TD-4211
1/4"x28 UNF Air Angle Drill

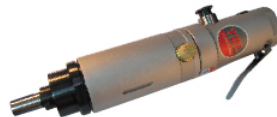


TD-4214
1/4"x28 UNF 45° Air Angle Drill

AIR TAPPING TOOLS



TD-4000(M6-M12)
TD-4001(M3-M10)



TD-4006(M4-M16)
TD-4007(M4-M24)



TD-4008(M3-M12)

Specification (at 90 PSI)

Model No.	Drilling Cap.	Free Speed (Rpm)	Overall Length		Air Inlet (Pt/Npt)	Air Hose (I.D.)	Avg. Air Consumption		Net Weight		NSpindle Type
			inch	mm			Cfm	L/Min.	Kgs	Lbs	
TD-4015	16	1,100	12"	305	3/8"	1/2"	16	452	5.86	12.92	Tapper
TD-4015T	14-22(Alu.),20(Steel)	1,100	13"	330	3/8"	1/2"	16	452	5.64	12.4	Tapper
TD-4016	19	1,000	16-1/2"	420	3/8"	1/2"	15	424	6.34	19.4	Tapper
TD-4016T	14-22(Alu.),20(Steel)	1,000	17-3/10"	440	3/8"	1/2"	15	440	6.08	13.4	Tapper
TD-4029	6	3,200	10"	226	1/4"	3/8"	3	85	0.65	1.43	1/4"X28
TD-4211	6	3,000	10-3/5"	270	1/4"	3/8"	3	85	0.77	1.7	1/4"X28
TD-4214	6	3,000	10-3/5"	270	1/4"	3/8"	3	85	1.2	2.65	1/4"X28

Model No.	Tapping Capacity(MM)			Free Speed (Rpm)	Overall Length		Air Inlet (Pt/Npt)	Air Hose (I.D.)	Avg. Air Consumption		Net Weight	
	Aluminum	Copper	Iron		inch	mm			Cfm	L/Min.	Kgs	Lbs
TD-4000	6-12	6-12	6-8	150	9-7/10"	245	1/4"	3/8"	7	198	1.9	4.19
TD-4001	3-10	3-10	3-6	2,500	8-9/10"	225	1/4"	3/8"	7	198	1.36	3.0
TD-4006	4-16	4-16	4-14	250	11-4/10"	297	1/4"	3/8"	2	57	2.17	4.78
TD-4007	4-24	4-24	4-22	320	13-3/5"	346	1/4"	3/8"	4.5	127	3.1	6.23
TD-4008	3-12	3-12	3-10	400	9-7/20"	238	1/4"	3/8"	4.5	127	2.3	5.27