

HV301 | 加壓式氣動流體幫浦

HIGH VISCOSITY FLUID PUMP

特點

- (1) 幫浦動作及抽油為兩個獨立系統，壓縮空氣不會汙染桶內油脂。
- (2) 特殊的壓力板設計可供用於有錐度的容器(φ265~φ300)。
- (3) 典型的使用範圍為工廠、汽修廠、船舶保養、採礦機械、農耕、軍隊、建築、大眾運輸等。
- (4) 外加氣壓缸加壓，可使用在3#黃油或類似的流體上。
- (5) 適用各國廠牌5加侖原裝黃油桶。
- (6) 幫浦本體材質採用高強度鋁合金鍛造成型。

用油

- (1) 一般 00#~3# 黃油均能順暢注入。

Feature

- (1) Pump moves and oil suction are two separation system, it won't contaminating grease.
- (2) The special design of the follow plate is for the container with taper.(drum inner dimension φ 265~φ300).
- (3) Typically used in workshops, service stations, fleet maintenance, mining, agriculture, armed forces, construction, trains, etc.
- (4) Adopting the pressure design of additional air cylinder makes the stiff grease easier to be sucked.
- (5) Suitable for original 5 gallon grease drum from every country.
- (6) The pump is made of aluminum alloy by forging.

Grease usage

- (1) General 00#~3# grease all can be infused into smoothly.



型號 Model	容量 Capacity	空氣輸入壓力 Air Input Pressure	壓力比 Pressure Ratio	黃油輸出壓力 Grease Output Pressure	輸出量 Deliver Rate	油管長度 Hose Length	淨重 N.W.	毛重 G.W.	材積 CUFT
HV301	20L	4~9 bar 60~130 psi	45 : 1	180~405 bar 2700~5850 psi	9 g/cycle	10 ft	64 kgs	78.5 kgs	12'

外徑尺寸 The Outside Dimension :

長 Length	寬 Width	最低高度 Mini Height	最高高度 Max Height
460 mm	420 mm	1140 mm	1400 mm

HV302 | 加壓式氣動流體幫浦

HIGH VISCOSITY FLUID PUMP

特點

- (1) 雙氣壓缸結構設計，使機器操作更加平穩，作動受力更加平均，流體輸出更順暢。
- (2) 特殊的壓力板設計，能使壓力板與容器更能緊密結合，可輕鬆應對具有錐度之容器及高黏度流體，並可大幅減少容器內部、底部之殘餘材料。
- (3) 柱塞式設計無橡膠油封，可抽取潤滑脂或油墨等特殊流體物質。
- (4) 使用氣壓缸輔助加壓，可用於高黏度潤滑脂或是一般幫浦不易抽取之潤滑脂。
- (5) 大輸出流量設計，適用於各種生產線及大流量者使用。
- (6) 適用各國廠牌5加侖原裝黃油桶。
- (7) 幫浦本體材質採用鋁合金成型。

用油

- (1) 一般 00#~3# 黃油均能順暢注入。
- (2) 特殊潤滑脂適用範圍請洽本公司。

Feature

- (1) more average actuation force and smoother fluid output.
- (2) Special design of follower plate which enables the follower plate and container can be combined tighter. This can be used on any container with taper and high viscosity fluid and can further reduce the residual materials inside the container or at the bottom of container significantly.
- (3) The design of the non-rubber seal can extract special fluids such as grease or ink.
- (4) The pneumatic cylinder auxiliary press is suitable for high viscosity grease or the grease that hard to extract by normal pump.
- (5) The large output flow design is suitable for different production lines or demand for large flow.
- (6) Suitable for original 5 gallon grease drum from every country.
- (7) The pump is made of aluminum alloy.

Grease usage

- (1) General 00#~3# grease all can be infused into smoothly
- (2) For special grease please contact with us.



型號 Model	容量 Capacity	空氣輸入壓力 Air Input Pressure	壓力比 Pressure Ratio	黃油輸出壓力 Grease Output Pressure	輸出量 Deliver Rate	油管長度 Hose Length	淨重 N.W.	毛重 G.W.	材積 CUFT
HV302	20L	3~7 bar 40~100 psi	32 : 1	96~224 bar 1280~3200 psi	34 g/cycle	-	76.0 kgs	91.0 kgs	12'

外徑尺寸 The Outside Dimension :

長 Length	寬 Width	最低高度 Mini Height	最高高度 Max Height
460 mm	420 mm	1140 mm	1400 mm



OFF250

過濾器
Strainer

RD100

減壓閥
Fluid Regulator

APD005/010/050

APD100

APD300

APD2000/5000/10000

定量閥系列
Precise Fluid Dispenser

自動化注油解決方案 AUTOMATION REFUELING SYSTEM

專業提供定量加脂,注油設備,塗(噴)油設備
Specializing quantitative grease, oil filling,
painting and spray oil equipment



HV301
(20L)

HV104
(200L)

定量閥規格表 Precise Fluid Dispenser Specification

項目 Item	型號 Type							
	APD005	APD010	APD050	APD100	APD300	APD2000	APD5000	APD10000
吐出量 Dispensing volume (c.c.)	0.05~0.5	0.1~1.0	0.5~5	1~10	3~30	20~200	100~500	200~1000
最小作動壓力 Minimum operating pressure (MPa)	潤滑油脂部分 Lubricant			4.9 (50kg)				
	氣壓部分 Barometric pressure			0.3 (3kg)				
使用壓力範圍 Operating pressure range (MPa)	潤滑油脂部分 Lubricant			4.9~14.7 (50~150 kg)		4.9 ~ 9.8 (50~100 kg)		
	氣壓部分 Barometric pressure			0.3~0.7 (3~7 kg)				
潤滑油脂部分可承受壓力 Bearable pressure on lubricant (MPa)	20.6 (210 kg)			11.8 (120 kg)				
可使用潤滑脂(黃油) Grease range	NLGI No.0~No.3							
重量 Weight (kg)	約1.6	約1.6	約1.7	約2.7	約2.3	約7.7	約13	約22

過濾器規格表 Strainer Specification

項目 Item	型號 Type
	OFF250
入口尺寸 Inlet	3/8"PS (f)
出口尺寸 Outlet	3/8"PS (f)
過濾網目 Strainer (Mesh)	100目, 200目, 300目
最大可承受壓力 MPa Maximum Regulated Fluid Pressure	25 (250 kg)
重量 Weight (kg)	約1.0

減壓閥規格表 Fluid Regulator Specification

項目 Item	型號 Type	
	RD100	RD250
入口尺寸 Inlet	3/8"PS (f)	
出口尺寸 Outlet	3/8"PS (f)	
調壓範圍 Pressure Range (MPa)	0~9.8 (0~100 kg)	0.2~25 (20~250 kg)
最大可承受壓力 MPa Maximum Regulated Fluid Pressure	9.8 (100 kg)	25 (250 kg)
重量 Weight (kg)	約1.8	約1.8



提升產能 降低成本

Improve Productivity,
Reduce Cost

由於消費者需求種類繁多且變化快速，各種產業中的製造商皆面臨了生產速度、生產成本和生產品質的更大考驗。因此，憑藉豐富的自動化經驗以及快速客製化的優勢，我們提供全面的定量注油之解決方案，滿足各製造商需求，克服生產上的重大挑戰。

Since the demands of consumers are various and can be changed rapidly, the manufacturers of each industry have encountered big tests of enhancing the production speed, reducing the production cost & requiring the best quality. Therefore we provide the solution for completed doing fueling, spraying and dispensing in order to satisfy the demands of manufacturers and overcome the challenge of production.

系統組成示意圖 System Components

供油幫浦
Oil or Grease Pump
供應油料到系統
Supply oil or grease into system

過濾器
Strainer
過濾油料中的雜質
Filter impurities in oil or grease

減壓閥
Fluid Regulator
調整最終入料壓力
Adjust the final feeding pressure

定量閥
Precise Fluid Dispenser
定量輸出油料
Quantitative grease or oil output

注油模具或生產線
Filling mold or production line
依據客戶需要注油零件加以搭配
Depend on customer needs



全自動系統
Automatic System



半自動系統
Semiautomatic System



應用範例 Application Examples

油封塗油
Seal

腳輪塗油
Caster

零件噴油
Spare Parts

汽車零件注油
Car Parts

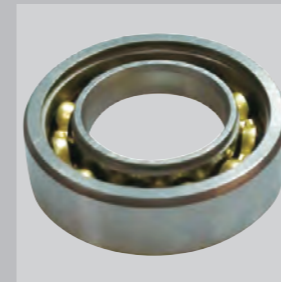
軸承注油
Bearing

管內噴黃油
Tube

軸承座填油
Bearing Seat

球頭塗油
Ball Rod

注油前
Before



注油後
After

