

6mm DUAL-LENS CAMERA

- Easily switch front/side camera with 640x480 resolutions.
- Adjustable brightness front 6 & side 1 white LED lights.
- Strong & anti scratch sapphire glass lens.
- IP67 water resistant & oil, dust-proof camera lens.
- 3.5" monitor with QVGA resolutions.
- 18650 Li-Ion battery (2600mAh), continuous 5 Hrs.
- Ergonomics design with soft cover, stand upright bracket support.

Newest fluid dispensing technology (glare-free)

Sapphire cover lens (Scratch/impact resistance)

One key toggle camera lens

Front & side lens ensure omnidirectional inspection



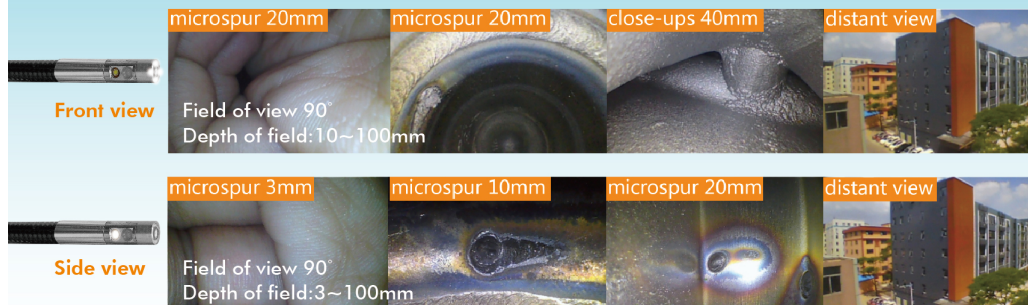
Ner Digital Camera Resolution has doubled



Specialized Lens for Endoscope



Newest Fluid Dispensing Technology



Model No: **PST-D601**

FEATURES	SPECIFICATION
INSERTION PROBE	
Diameter of camera	6 mm
CMOS sensor	1/8" CMOS chip
Camera resolution	640 x480 pixel
Camera lighting	6 LED (front len) /; 1 LED (side len)
Lightness manual adjustment way	Yes
FOV	90°
Camera depth of field	15~100mm (front len) ; 3~50mm (side len)
Probe length	1m (39 in.)
Probe material	shapable soft metal
CONSOLE	
Display size	3.5"TFT LCD Monitor
Video resolution	AVI (640x480)

FEATURES	SPECIFICATION
Photo resolution	JPEG (1600 x 1200)
Frame rotation	180° Rotation & Mirror image
Freeze frame	YES
Zoom	4x Variable Digital Zoom
Menu language	Chinese, English, French, German, Spanish, Japanese, Russian
Interface	micro USB 2.0/ TV out/ TF card slot
TV out	PAL
Recording media	TF Memory Card (Up to 32GB)
Power source	18650 Li-Ion Battery (2600mAh)
Battery life (typical)	5 hours
Dimensions of console	140 x 90 x 34mm
Weight of console	270g



GOLDEN ROOT CO., LTD.

No.10, Lane 304, Sec. 1,Chien Kuo S. Rd.,Taipei 10656, Taiwan

Tel: 886-2-2702 2266 Fax: 886-2-2705 4819 E-mail: info@golden-root.com.tw

