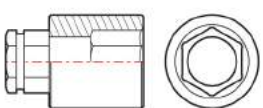


GO THROUGH SOCKET

- Made by heat-treated **Chrome Vanadium Steel** for strength exceeding international specifications.
- Professional plating prevents sockets from corrosion.
- Go Through Socket works together with Geartech® Wrench, allowing socket to travel the length of threads where traditional socket can't reach.



GO THROUGH SOCKET



TSK

Material | Chrome Vanadium Steel
Surface | Mirror Finish

Size (mm)	Wt. (g)	L (mm)
10	34	38
11	32	38
12	37	38
13	40	38
14	39	38
15	52	38
16	53	38
17	63	38
18	69	38
19	66	38



23x Metric Go Through Socket Set

PS Tray + Metal Case + Color Sleeve + POF

23x MM 10x Metric Geartech® Combination Wrenches:

10, 11, 12, 13, 14, 15, 16, 17, 18, 19mm

10x Metric Go Through Sockets:

10, 11, 12, 13, 14, 15, 16, 17, 18, 19mm

3x Quick Release Adapters:

1/4" Dr x10mm, 3/8" Dr x13mm, 1/2" Dr x19mm