

# WIRE FORMING PARTS

## Ring

Practised molding team & precision punching machining  
Your best partner for OEM/ODM project

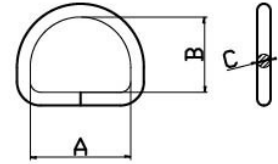
STEADY & STABLE  
TIME IS MONEY! AUTOMATIC WIRE FORMING MACHINE  
PROVIDED QUICK DELIVERY



D Ring  
RING-01



D Ring with tube  
RING-02

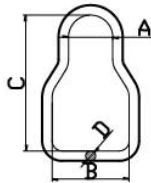


Item No.	A mm	B mm	C mm	B.S (kg)
RD04-025047030	25	30	4.7	1500
RD04-025063032	25	32	6.3	1500
RD04-044063042	44	4	6.3	1800

Item No.	A mm	B mm	C mm	B.S (kg)
RD04-050080060	50	60	8	2300
RD04-051063047	51	47	6.3	2300



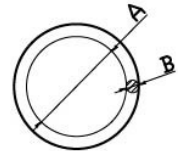
Waisted Ring  
RING-03



Item No.	A mm	B mm	C mm	D mm
WH08-050026042	11	26	42	5
WH08-063028061	22	28	61	6.3



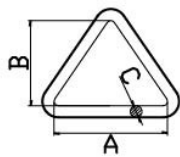
O Ring  
RING-04



Item No.	A mm	B mm	Item No.	A mm	B mm
RO01-015030	15	3	RO01-035050	35	5
RO01-019030	19	3	RO01-038060	38	6
RO01-020040	20	4	RO01-040040	40	4
RO01-025040	25	4	RO01-050080	50	8
RO01-025050	25	5	RO01-055060	55	6
RO01-028050	28	5	RO01-065090	65	9
RO01-030050	30	5	RO01-076080	76	8



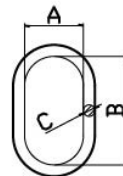
Triangle Ring  
RING-05



Item No.	A mm	B mm	C mm	B.S (kg)
RD05-026060034	26	34	6	1000
RD05-053063045	53	44.5	6.3	2200
RD05-050110048	50	48	11	3800
RD05-068011050	68	50	11	5000
RD05-070080062	70	62	8	-



Oval Ring  
RING-06



Item No.	A mm	B mm	C mm
RA01-008050025	8	28	5
RA01-013050051	13	51	5
RA01-013080605	13	60.5	8
RA01-030115051	30	51	11.5



Rectangle Ring  
RING-07

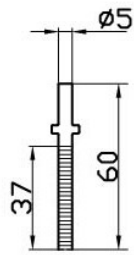


Item No.	A mm	B mm	C mm	Item No.	A mm	B mm	C mm
RR01-0127025095	12.7	9.5	2.5	RR01-025032051	50.8	25.4	3.2
RR01-019030095	19	9.5	3	RR01-051040020	51	20	4
RR01-022040040	22	40	4	RR01-051050010	51	10	4
RR01-025020065	25	6.5	2	RR01-051060032	51	32	6
RR01-038030095	38	9.5	3	RR01-070050025	70	25	5

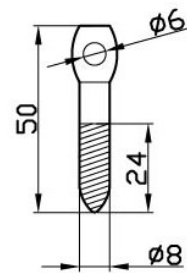
# Bolt



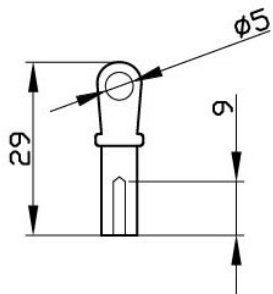
Bolt/Stud  
Bolt-01



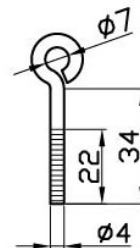
Bolt/Eyelet Screw  
Bolt-02



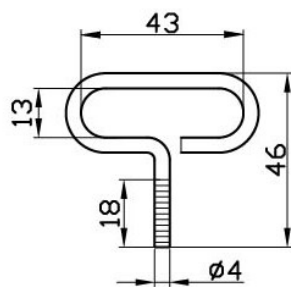
Bolt/Eyelet Stud  
Bolt-03



Bolt/Eyelet Stud  
Bolt-04



Bolt/Stud Hook  
Bolt-05

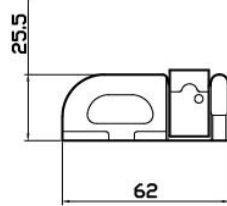


# Fitting



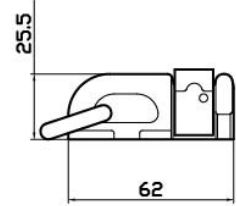
**Double Stud Fitting**  
**SF202P-062018025**

B.S: 2300kg  
Finish: Zinc



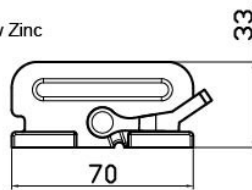
**Double Stud Fitting with O ring**  
**SF202-062018025TZ-O**

B.S: 2300kg  
Finish: Zinc



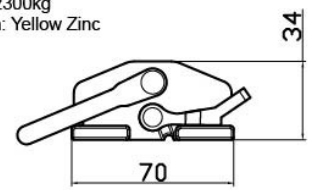
**End Fitting**  
**EF101-051YY**

B.S: 2300kg  
Finish: Yellow Zinc



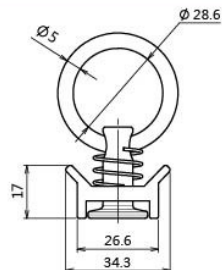
**Forged End Fitting**  
**EF103-02540127061Y**

B.S: 2300kg  
Finish: Yellow Zinc



**Single Stud Fitting**  
**SF102P-0286050**

B.S: 1300kg  
Finish: Anodized





# Safety Buckle



Harness Safety Buckle  
Supplied with various material on the body, bolt and buckle, hooks  
for varying harness configurations.



**Harness Safety Buckle**  
**HSB-001AL-GG**

Min. Breaking Strength: 12kN/2500lbs  
Aluminum Alloy  
Safety Locking System  
Webbing: 1 3/4" (45mm)  
Net Weight: 75g



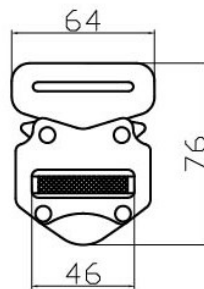
**Harness Safety Buckle**  
**HSB-001H1**

Min. Breaking Strength: 15kN/3000lbs  
Alloy Steel  
Safety Locking System  
Webbing: 1 3/4" (45mm)  
Net Weight: 120g



**Harness Safety Buckle**  
**HSB-001SP-1**

Min. Breaking Strength: 10kN/2000lbs  
SUS 304/SUS 316  
Safety Locking System  
Webbing: 1 3/4" (45mm)  
Net Weight: 149 gm



# Swivel Connector



**Swivel Connector**  
**SWC-01**

Min. Breaking Strength: 40kN/8900lbs  
Forged Alloy Steel



**Stainless Swivel Connector**  
**SWC-02**

Min. Breaking Strength: 35kN/7500lbs  
SUS 304/SUS 316



**Aluminum Swivel Connector**  
**SWC-03**

Min. Breaking Strength: 9kN/2000lbs  
Forged Aluminum Alloy  
Anodized Silver



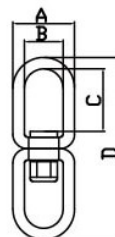
**Aluminum Swivel Connector**  
**SWC-04**

Min. Breaking Strength: 9kN/2000lbs  
Forged Aluminum Alloy  
Anodized Gold



**Aluminum Swivel Connector**  
**SWC-05**

Min. Breaking Strength: 9kN/2000lbs  
Forged Aluminum Alloy  
Anodized Pink



Item No.	A mm	B mm	C mm	D mm
SWC-01/02	43	27	43.5	127
SWC-03/04/05	29.4	17	19.5	69.4