



OIL FLUID EQUIPMENT.....➔	1
OIL/ FLUID EXTRACTOR/ DISPENSER.....➔	2
BRAKE FLUID (OIL).....➔	4
TRANSMISSION/ ATF SYSTEM.....➔	5
FUNNEL/ SYLINGE.....➔	7
OIL PAN/ STORAGE.....➔	8
OTHERS.....➔	10

ENGINE

TIMING

ELECTRICAL/  
DIAGNOSTIC/  
AC/PLUMBING

UNDER CAR

BODY

MOTORCYCLE/  
TRUCK/MARINE

OIL EQUIPMENT

GENERAL





# OIL EQUIPMENT



ENGINE

TIMING

ELECTRICAL/  
DIAGNOSTIC/  
AC/PLUMBING

UNDER CAR

BODY

MOTORCYCLE/  
TRUCK/MARINE

OIL EQUIPMENT

GENERAL

## OIL FLUID EQUIPMENT



**FLE001R**  
**STAINLESS FUEL RETRIEVER**  
CAPACITY: 40L  
DIMENSION: 420 x 390 x 940mm



**FLE001R-90L**  
**STAINLESS FUEL RETRIEVER**  
CAPACITY: 90L  
DIMENSION: 530 x 530 x 1100mm



**PPA500R**  
**AIR OPERATED GREASE PUMP**  
CAPACITY: 20L; AIR INPUT PRESSURE: 4 - 9 BAR (60-130 PSI); GREASE OUTPUT PRESSURE: 180 - 405 BAR (2700 - 5850PSI); DELIVER RATE: 30c.c/sec



**PPH250R**  
**HAND OPERATED OIL PUMP**  
CAPACITY: 20L  
DELIVER RATE: 100c.c/ EACH CYCLE



**PPH251R**  
**HAND OPERATED OIL PUMP**  
CAPACITY: 20L  
DELIVER RATE: 65c.c/ EACH CYCLE



### WASTE OIL RESERVOIR

<b>MI10700R-60L</b>	CAPACITY: 60L
<b>MI10700R-80L</b>	CAPACITY: 80L



**MI10701R**  
**30L WASTE OIL DRAINER**  
DIMENSION: 550 x 550 x 880 ~1050mm



**MI10702R**  
**50L WASTE OIL DRAINER**  
DIMENSION: 550 x 550 x 900 ~1070mm



**FLE010R**  
**70L VENTURI SYSTEM OIL EXTRACTOR**  
CAPACITY: 60L (CHAMBER: 10L)  
POWER: AIR



**FLE011R**  
**90L AIR VENTURI OIL EXTRACTOR**  
CAPACITY: 90L (CHAMBER: 8L)  
POWER: AIR



**FLE012R**  
**90L GEAR PUMP OIL EXTRACTOR/ DRAINER**  
CAPACITY: 90L (CHAMBER: 8L)  
POWER: AIR; 1/4" GEAR PUMP



**FLE013R**  
**80L AIR GEAR PUMP OIL EXTRACTOR/ DRAINER**  
CAPACITY: 80L; POWER: AIR



**FLE014R**  
**80L WASTE OIL DRAINER/ EXTRACTOR**  
CAPACITY: 80L; POWER: AIR



**FLE015R**  
**12L ELECTRICAL GEAR PUMP OIL EXTRACTOR**  
CAPACITY: 12L; POWER: ELECTRIC



**FLE016R**  
**VACUUM PUMP OIL EXTRACTOR**  
CAPACITY: 60L  
VACUUM CHAMBER CAPACITY: 18L  
INTERNAL OIL TANK CAPACITY: 42L  
OIL SUCTION CAPACITY: 5.6L/min





**FLE017R**  
**VACUUM PUMP OIL EXTRACTOR WITH OIL DISPENSING FUNCTION**  
 CAPACITY: 60L  
 VACUUM CHAMBER CAPACITY: 18L  
 INTERNAL OIL TANK CAPACITY: 42L  
 OIL SUCTION CAPACITY: 5.6L/min  
 OIL REFUEL HOSE POWER: 0.28  
 NEW OIL CAPACITY: 6L



**FLE020R**  
**30L PNEUMATIC FLUID ATOMISER**  
 CAPACITY: 30L; STAINLESS BODY



**FLE022R**  
**ELECTRICAL GEAR PUMP OIL EXTRACTOR**  
 OIL SUCTION CAPACITY: 16L/min  
 VOLTAGE: 110v/ 60HZ; 1/2" GEAR PUMP FOR LARGE VOLUME JOB



**FLE021R**  
**16L AIR GEAR PUMP OIL EXTRACTOR**  
 CAPACITY: 16L  
 POWER: AIR



**FLE018R**  
**PRESSURE FLUID DISPENSER**  
 CAPACITY: 40L  
 POWER: AIR PRESSURE



**FLE019R**  
**PRESSURE FLUID DISPENSER**  
 CAPACITY: 80L  
 POWER: AIR PRESSURE



**FLE023R**  
**12V PORTABLE OIL TRANSFER PUMP**  
 VOLTAGE: DC-12v  
 OIL SUCTION CAPACITY: 3 ~ 4L/min  
 CAPACITY: 7.5L



**FLE024R**  
**3/8" DIAPHRAGM TRANSFER PUMP**  
 MAX DELIVERY: 28L/min



**AME050R**  
**COOLANT REPLACEMENT SYSTEM**  
 CAPACITY: 20L  
 DIMENSION: 480 x 650 x 1050mm



**FLE025R**  
**INJECTION CLEANING SYSTEM**  
 CAPACITY: 1L  
 POWER: AIR OPERATED



**FLE026R**  
**POWER STEERING FLUSHING SYSTEM**  
 CAPACITY: NEW FLUID 5L/ USED FLUID 16L  
 DIMENSION: 500 x 480 x 940mm

## OIL/ FLUID EXTRACTOR/ DISPENSER



**AMM514R**  
**PNEUMATIC FLUID EXTRACTOR W/ AUTO SHUT OFF DEVICE (5.0L)**



**AMM519C-M**  
**MANUAL FLUID EXTRACTOR (9.0L)**



**AMM519C-P**  
**PNEUMATIC FLUID EXTRACTOR (9.0L)**

ENGINE

TIMING

ELECTRICAL/  
DIAGNOSTIC/  
AC/PLUMBING

UNDER CAR

BODY

MOTORCYCLE/  
TRUCK/MARINE

OIL EQUIPMENT

GENERAL



# OIL EQUIPMENT



ENGINE

TIMING

ELECTRICAL/  
DIAGNOSTIC/  
AC/PLUMBING

UNDER CAR

BODY

MOTORCYCLE/  
TRUCK/MARINE

OIL EQUIPMENT

GENERAL



**AMM519C**  
MANUAL & PNEUMATIC  
FLUID EXTRACTOR (9.0L)



**AMM552R**  
PRESSURE FLUID DISPENSER  
(10L)



**AMM3003C**  
PNEUMATIC/ MANUAL  
OPERATION FLUID  
EXTRACTOR (15L)



**AMM529R-1**  
PNEUMATIC OIL & LIQUID  
DISPENSER (6L)



**AMM3007R**  
PNEUMATIC/ MANUAL  
OPERATION FLUID  
EXTRACTOR (6L)



**AMM529R**  
PNEUMATIC OIL & LIQUID  
DISPENSER WITH SAFETY  
VALVE & GAUGE (6L)



**AMM3008R**  
FLAT TANK 12v OIL  
CHANGER (13.2L)  
MOTOR: 12v DC W/ INTEGRAL POWER  
SWITCH



**AMM530R**  
PNEUMATIC FLUID  
EXTRACTOR (8.5L)



**AMM519C-1**  
COMBO FLUID EXTRACTOR  
(10L)  
MANUAL & AIR OPERATED



**AMM543R**  
PNEUMATIC FLUID  
EXTRACTOR & DISPENSER  
(9L)



**AMM519R-2**  
MANUAL FLUID EXTRACTOR  
(6L)



**FLE206R**  
DIFFERENTIAL FLUID  
DISPENSER  
CAPCITY: 5L  
DIMENSION: 270 x 230 x 170 mm



**AMM519R-3**  
MANUAL LOW PROFILE FLUID  
EXTRACTOR (4L)



**FLE205R**  
FLUID EXTRACTOR WITH  
LONG STRAIGHT NOZZLE  
CAPACITY: 1.0L



**AMM549R**  
PNEUMATIC FLUID EXTRACTOR  
(10L)





## BRAKE FLUID (OIL)



**AMR407L**  
ONE MAN OPERATION  
BRAKE BLEEDER



**AMR404L**  
ONE MAN BRAKE BLEEDER  
KIT



**AMR405L**  
ONE MAN BRAKE BLEEDER  
KIT



**AMM516**  
PNEUMATIC BRAKE OIL  
EXTRACTOR & BLEEDER  
KIT



**AMM516I-A**  
BRAKE BLEEDER - 1000c.c



**AMM516I-B**  
PNEUMATIC BRAKE  
OIL EXTRACTOR - 2000c.c



**AMM524C**  
BASIC BRAKE OIL EXTRACTOR  
WORKING PRESSURE: 40 - 170PSI  
MAX. CAPACITY: 2000c.c



**AMM521R**  
NON-POWER BRAKE OIL  
RECEIVER (1000c.c)



**AMM526R**  
NON-POWER BRAKE OIL  
RECEIVER (1000c.c)



**AMM532R**  
VACUUM BRAKE FLUID  
BLEEDER WITH 1L SUPPLY  
BOTTLE  
CAPACITY: 3L (BLEEDER) & 1L (BOTTLE)



**AMM525C**  
BRAKE FLUID CHANGER KIT  
CAPACITY: 2L; WITH HOSES & REFILL BOTTLE



**AMM523R**  
VACUUM BRAKE FLUID  
BLEEDER SET  
CAPACITY: 1L; WITH TWO BRAKE FLUID  
SUPPLY BOTTLES (1L)



**AMM542R**  
UNIVERSAL VACUUM BRAKE  
FLUID BLEEDER SET  
CAPACITY: 1L; WITH FLUID SUPPLY BOTTLES  
700c.c (ADAPTORS = 21 ~ 30mm, 24 ~ 32mm,  
28 ~ 37mm, 32 ~ 41mm)



**AMM548R**  
VACUUM BRAKE FLUID  
BLEEDER  
CAPACITY : 6L  
DIMENSION : 270 x 230 x 375mm



**FLE200R**  
MANUAL BRAKE FLUID  
BLEEDER (FOR EUROPEAN  
CARS)  
CAPACITY: 2.5L



**FLE201R**  
VACUUM BRAKE FLUID  
BLEEDER  
CAPACITY: 1.0L



# OIL EQUIPMENT



ENGINE

TIMING

ELECTRICAL/  
DIAGNOSTIC/  
AC/PLUMBING

UNDER CAR

BODY

MOTORCYCLE/  
TRUCK/MARINE

OIL EQUIPMENT

GENERAL



**FLE203A**  
BRAKE FLUID SUPPLY  
BOTTLE  
CAPACITY: 1L



**FLE204A**  
BRAKE FLUID RECEIVING  
BOTTLE  
CAPACITY: 0.6L



**FLE002R**  
12v PRESSURE BRAKE FLUID  
BLEEDER  
CAPACITY: 5L  
DIMENSION: 365 x 300 x 820mm



**AME1000R-S**  
BRAKE FLUID BLEEDER W/  
STAINLESS HOUSING  
(PRESSURE TYPE)  
CAPACITY: 5L  
DIMENSION: 350 x 275 x 450mm



**AME1000R**  
BRAKE FLUID BLEEDER  
(PRESSURE TYPE)  
CAPACITY: 5L  
DIMENSION: 350 x 275 x 450mm



**AME1001R**  
BRAKE FLUID BLEEDER  
(PRESSURE TYPE)  
CAPACITY: 5L  
DIMENSION: 350 x 275 x 570mm



**AME1007R**  
PRESSURE BRAKE BLEEDER  
CAPACITY: 5L  
SIZE: 350 x 275 x 450mm



**AME1009R**  
PRESSURE BRAKE BLEEDER  
WITH UNIVERSAL ADAPTER KIT  
CAPACITY: 5L  
SIZE: 350 x 275 x 450mm



**AME1010R**  
PROFESSIONAL AIR BRAKE  
BLEEDER  
CAPACITY: 5L  
SIZE: 350 x 275 x 450mm



**AME1011E**  
ADAPTER SET FOR AIR  
BRAKE BLEEDER  
WITH QUICK COUPLING, FITS AME1010R  
BRAKE BLEEDER



**AME1012E**  
BRAKE FILLING ADAPTER  
SET



**FLE207R**  
PRESSURE BRAKE  
BLEEDER  
SIZE: 410 x 310 x 900mm  
CAPACITY: 5L; WEIGHT: 16kg



**FLE208R**  
BRAKE DISK LINING  
CLEANING SYSTEM  
CAPACITY: 20L  
POWER: AIR OPERATED



**PMA501A**  
BRAKE LINE SCRAPER  
LENGTH: 160mm

## TRANSMISSION/ ATF SYSTEM



**AMM541R**  
TRANSMISSION FILLING  
SYSTEM KIT W/ 5PC  
ADAPTERS  
CAPACITY: 7.5L





**FLE007R**  
TRANSMISSION FILLING  
SYSTEM WITH 5PC  
ADAPTERS  
CAPACITY: 7.5L



**AMM540E-1**  
9PC ADAPTERS SET FOR  
ENGINE PRELUBE SYSTEM  
FOR ENGINE OIL SYSTEM AT THE OIL  
PRESSURE SENSOR



**AMM540R-1**  
TRANSMISSION FILLING  
SYSTEM KIT (DOUBLE OIL S  
CAVENG PIPE) W/ 8PC  
ADAPTERS  
CAPACITY: 7.5L



**FLE003R**  
PNEUMATIC OIL (ATF) &  
LIQUID DESPENSER W/  
8PC ADATPERS  
CAPACITY: 6L



**AMM540R-3**  
TRANSMISSION FILLING  
SYSTEM WITH 8PC ADAPTERS  
CAPACITY: 9.5L



**FLE004R**  
PNEUMATIC OIL (ATF) &  
LIQUID DESPENSER +  
UNIVERSAL NOZZLE W/  
8PC ADATPERS  
CAPACITY: 6L



**AMM540R-6**  
TRANSMISSION FILLING  
SYSTEM W/ 8PC ADAPTERS  
CAPACITY: 4L



**FLE005R**  
PNEUMATIC OIL (ATF) &  
LIQUID DESPENSER W/  
14PC ADAPTERS  
CAPACITY: 6L



**AMM545R**  
MANUAL FLUID DISPENSER W/  
11PC ADAPTERS  
CAPACITY: 7L



**FLE006R**  
PNEUMATIC OIL (ATF) &  
LIQUID DESPENSER +  
UNIVERSAL NOZZLE W/  
14PC ADATPERS  
CAPACITY: 6L



**AMM540E-P1**  
8PC ADAPTERS FOR  
TRANSMISSION FILLING  
SYSTEM



**AMM3050R**  
TRANSMISSION FILLING  
SYSTEM W/ 8PC ADAPTER  
CAPACITY: 7.5L



**AMM540E-P2**  
11PC ADAPTERS FOR  
TRANSMISSION FILLING  
SYSTEM



**AMM3050R-1**  
TRANSMISSION FILLING  
SYSTEM W/ 13PC ADAPTER  
CAPACITY: 7.5L



**AMM540E-P3**  
12PC ADAPTERS FOR  
TRANSMISSION FILLING  
SYSTEM



**AMM3050R-2**  
TRANSMISSION FILLING  
SYSTEM W/ 15PC ADAPTER  
CAPACITY: 7.5L



# OIL EQUIPMENT



ENGINE

TIMING

ELECTRICAL/  
DIAGNOSTIC/  
AC/PLUMBING

UNDER CAR

BODY

MOTORCYCLE/  
TRUCK/MARINE

OIL EQUIPMENT

GENERAL



## FLE040R PROFESSIONAL ATF EXCHANGER

CAPACITY: 20L  
DIMENSION: 650 x 530 x 980 mm  
VOLTAGE: 110v OR 220v



## FLE041R DIGITAL ATF EXCHANGER

DIMENSION: 550 x 480 x 1050mm  
POWER: 12v



## FLE042R SEMI AUTOMATIC ATF EXCHANGER (ECONOMY TYPE)

CAPACITY: 20L



## FLE043R SEMI AUTOMATIC ATF EXCHANGER

CAPACITY: 20L



## FLE044E ATF FITTING CONNECTORS KIT



## AMM547R-2 1.5L FUEL RETRIEVING SYRINGE (ADBLUE)

CAPACITY: 1.5L



## AMM547R-3 1.5L FUEL RETRIEVING SYRINGE (VITON SEAL)

CAPACITY: 1.5L



## AMM547R-4 PORTABLE FLUID EXTRACTOR

CAPACITY: 1L



## AMM547A-5 ADBLUE PIPE

APPLICATION: NEWER DIESEL VEHICLES  
FITS ADBLUE BOTTLE & ADBLUE LINE ON  
VEHICLES



## AMR1533L-1 FUNNEL

CAPACITY: 1200 c.c  
DIMENSION: 165 x 165 x 480mm



## AMR1539A OIL FUNNEL



## AMR1534A SQUARE OIL FUNNEL

CAPACITY: 850c.c

DIMENSION: 180 x 100 x 145mm



## AMM547R-1 SYRINGE FOR VEHICLE FLUID CHANGE

CAPACITY: 200c.c



## AMM547R SYRINGE FOR VEHICLE FLUID CHANGE

CAPACITY: 1.5L



## FLE210A VISIBLE FUNNEL

CAPACITY: 1.1L

NOZZLE LENGTH: 36.5cm



## OIL PAN/ STORAGE

ENGINE

TIMING

ELECTRICAL/  
DIAGNOSTIC/  
AC/PLUMBING

UNDER CAR

BODY

MOTORCYCLE/  
TRUCK/MARINE

OIL EQUIPMENT

GENERAL



**FLE211A**  
VISIBLE FUNNEL WITH  
VALVE  
CAPACITY: 1.1L  
NOZZLE LENGTH: 36.5cm



**FLE209R**  
UNIVERSAL FLUID SUPPLY  
BOTTLE  
CAPACITY: 1.5L



**AMR1535R**  
OIL FUNNEL FOR TOYOTA,  
LEXUS



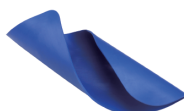
**AMR1538R**  
2.3L UNIVERSAL OIL  
FUNNEL  
FOR VW, AUDI, SEAT, SKODA, BENZ,  
BMW, TOYOTA, MISTUBISHI



**AMR1540L**  
2PC UNIVERSAL OIL  
FUNNEL  
RANGE: 28 ~ 74mm (1.1 ~ 2.9")



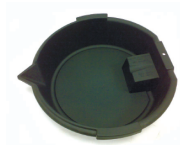
**AMM2772E**  
TOPPING UP ENGINE OIL  
CAPACITY: 1L  
THREAD ADAPTER: M37 x 3.0, M42 x 4.5,  
M32 x 3.5, M35 x 4.0



**MI31500D**  
FLEXIBLE, MOLDABLE FUNNEL  
SIZE: 372 x 170mm  
TEMPERATURE RANGE: -20 ~ 220°C



**AMM531A**  
BATTERY FLUID FILLER  
CAPACITY: 2L  
DIMENSION: 135 x 270 x 270mm



**AMM417A**  
OIL DRAIN PAN (6.6 LITER)



OIL DRAIN PAN

<b>AMM419A-1</b>	8 LITTER
<b>AMM419A</b>	16 LITTER



**AMM418A**  
OIL DRAIN PAN  
(24 LITER)

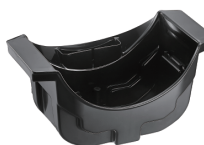


SAVE SPACE OIL DRAIN  
PAN

<b>AMM3500A</b>	CAPACITY: 3.5L
<b>AMM419A-2</b>	CAPACITY: 8L
<b>AMM419A-3</b>	CAPACITY: 16L



**AMM3550A**  
3L TRUCK & TRAILER  
WHEEL PAN  
SIZE: 316 x 246 x 156mm



**FLE226A**  
TIRE AXLE DRAIN PAN  
SIZE: 325 x 213 x 174mm  
CAPACITY: 2.2L



**FLE227A**  
TIRE AXLE DRAIN PAN  
WITH MAGNET  
SIZE: 325 x 213 x 174mm  
CAPACITY: 2.2L



**AMM3551A**  
2L OIL DRAIN PAN  
(MOTORCYCLE)  
SIZE: 380 x 212 x 73mm





# OIL EQUIPMENT



ENGINE

TIMING

ELECTRICAL/  
DIAGNOSTIC/  
AC/PLUMBING

UNDER CAR

BODY

MOTORCYCLE/  
TRUCK/MARINE

OIL EQUIPMENT

GENERAL



**AMM416A**  
DRAIN PAN & FUNNEL FOR  
OIL DRUM  
SIZE: Ø600mm  
CAPACITY: 20L



**AMM420A**  
NYLON OIL CAN (255c.c)



**FLE228A**  
DRAIN PAN WITH LEVEL  
SCALE (TRANSPARENT  
DESIGN)  
DIMENSION: 350 x 320 x 110mm



**AMM416A-1**  
DRUM DRAIN BASIN  
(20/ 30L)  
APPLICATION: 20/ 30L DRUM USE



**AMM3350A-4L**  
4 LITER OIL STORAGE  
SIZE: 427 x 292 x 100mm



**AMM553C**  
RESIDUAL FLUID  
COLLECTOR  
INCL. 2PC ANCHOR, 2PC BOTTLE,  
1PC FUNNEL (PP)



**AMM3350A-17L**  
17 LITER OIL STORAGE  
SIZE: 671 x 380 x 138mm



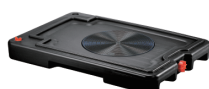
**FLE229C**  
RESIDUAL FLUID  
COLLECTOR  
SIZE: 174 x 197 x 86.6mm  
CAPACITY: 2L



**AMM3351A-9L**  
9 LITER WATERONG CAN  
SIZE: 620 x 295 x 173mm



**FLE221A**  
5L GASOLING RESERVE  
TANK



**FLE224R**  
LOW PROFILE COOLANT/  
ANTIFREEZE RECEIVER  
SIZE: 850 x 600 x 125mm  
CAPACITY: 20L



**FLE222A**  
10L GASOLING RESERVE  
TANK



**FLE225R**  
80L WASTE OIL DRAINER  
(FOR TRUCK)  
CAPACITY: 80L; 34kg NET WEIGHT



**FLE223A**  
20L GASOLING RESERVE  
TANK



**AMM421A**  
OIL CAN (150c.c)





## OTHERS



**AMC805E**  
DELUXE INJECTION  
CLEANING/ TESTING SET



**AMC806R**  
CARBON CLEANING  
CANISTER FOR MANIFOLD  
& THROTTLE  
BOTTLE CAPACITY: 1000ml



**AMC807R**  
CARBON CLEANING  
CANISTER FOR MANIFOLD  
& THROTTLE  
CAPACITY: 1000ml  
DIMENSION: 340 x 215 x 130mm



**AMC808R**  
CARBON CLEANING  
CANISTER FOR MANIFOLD  
& THROTTLE  
CAPACITY: 560ml  
DIMENSION: 63 x 63 x 255mm



**FLE220E**  
OIL QUALITY COMPARATOR  
TO EXAMINE OIL QUALITY VISUALLY



**MI10760R**  
MOBILE PARTS WASHER  
WITH CLEANING BRUSH  
CAPACITY: 9L  
DIMENSION : 460 x 660 x 260mm  
VOLTAGE: 110v/ 220v



**MI10761R-1**  
PARTS CLEANER (AIR PULSE  
SYSTEM) W/O MOTOR &  
BRUSH  
CAPACITY: 20L  
DIMENSION : 600 x 450 x 270mm



**MI10761R**  
PARTS CLEANER (AIR PULSE  
SYSTEM) W/ MOTOR & BRUCH  
CAPACITY: 20L  
DIMENSION : 600 x 450 x 270mm  
VOLTAGE: 110v/ 220v



**MI10750R**  
20 GALLON PARTS  
WASHER  
MAX. PUMP OUTPUT: 10 - 12 L/min  
SOLVENT CAPACITY: 12 GALLON  
110V/ 60HZ (240V/ 50HZ) SOLVENT PUMP



**MI10751R**  
40 GALLON PARTS  
WASHER  
MAX. PUMP OUTPUT: 20 L/ min  
SOLVENT CAPACITY: 24 GALLON



**MI10762R**  
ELECTRICAL PARTS  
WASHER  
SIZE: 820 x 620 x 150mm  
CAPACITY: 40L  
VOLTAGE: 110v/ 220v



**FLE219R**  
GREASE FILLER  
DISPENSER FOR PAIL  
DRUM (20L)  
BEARING DIAMETER: 100 - 200mm



**FLE212A**  
1L SWIVEL OIL RELEASE  
BOTTLE FOR CARTRIDGE  
TYPE OIL FILTER  
SIZE: 330 x 115 x 115mm  
CAPACITY: 1L  
FOR VW/ AUDI TFSI & GTI SYSTEM



**FLE213R**  
CARTRIDGE FILTER  
CHANGE SET (INCL OIL  
FILTER WRENCH)  
FOR TOYOTA/ LEXUS



**FLE214R**  
CARTRIDGE FILTER  
CHANGE SET (INCL OIL  
FILTER WRENCH)  
FOR VW/ AUDI



**FLE215A**  
OIL RELEASE HOSE FOR  
CARTRIDGE TYPE OIL  
FILTER  
FOR VW/ AUDI TFSI & GTI SYSTEM

ENGINE

TIMING

ELECTRICAL/  
DIAGNOSTIC/  
AC/PLUMBING

UNDER CAR

BODY

MOTORCYCLE/  
TRUCK/MARINE

OIL EQUIPMENT

GENERAL

ENGINE

TIMING

ELECTRICAL/  
DIAGNOSTIC/  
AC/PLUMBING

UNDER CAR

BODY

MOTORCYCLE/  
TRUCK/MARINE

OIL EQUIPMENT

GENERAL



## FLE216A

OIL RELEASE HOSE FOR  
CARTRIDGE TYPE OIL  
FILTER  
FOR TOYOTA/ LEXUS



## FLE218A

DRUM PLUG OPENER  
(PLASTIC)



## AMM5601R

OIL FILTER SEPARATOR  
WITH DRAIN PAN  
SIZE: 575 x 330 x 210mm



## FLE030R

70L CLEANING FOAM SPRAYER  
(MANUAL VALVE)  
CAPACITY: 70L; STAINLESS BODY



## FLE031R

90L CLEANING FOAM SPRAYER  
(AUTO CHECK VALVE)  
CAPACITY: 90L; STAINLESS BODY



## AMM539C-1

REFILL PRESSURE SPRAYER  
(ALUMINUM)  
MAX. CAPACITY: 650c.c (FL.OZ: 22oz)



## AMM539C

REFILL PRESSURE SPRAYER  
(STAINLESS)  
MAX. CAPACITY: 650c.c (FL.OZ: 22oz)



## AMM539A-ACCE

AUTO INFLATABLES FOR SPRAY  
CAN  
SIZE: 110 x 32 x 32mm  
SCALE: 0 ~ 10 kg/cm<sup>2</sup> (0 ~ 10BAR, 0 ~ 1MPa)



## FLE217L

DRUM PLUG OPENER (ALUMINUM)